

Free Spirit

Anna Maria Loves Hue Quilt

Featuring *AM Loves Hue* by Anna Maria

Anna Maria Horner incorporates little lessons in fussy-cutting into this design. Intended for beginning quilters, this quilt pairs perfectly with Anna Maria's *AM loves HUE* collection and showcases how she looks past the print to extend design possibilities in each fabric.

Collection:	AM Loves Hue by Anna Maria
Technique:	Piecing, Fussy-cutting
Skill Level:	Beginner
Finished Size:	84" x 84" (2.13m x 2.13m)

All possible care has been taken to ensure the accuracy of this pattern. We are not responsible for printing errors or the manner in which individual work varies. Please read the instructions carefully before starting this project. If kitting, it is recommended a sample is made to confirm accuracy.

Project designed by Anna Maria Horner | Tech edited by Quilt Pattern Writers

Fabric Requirements

DESIGN	COLOR	ITEM ID	YARDAGE
(A) Cartwheels	Parade	PWAJ127.PARADE	2 yards (1.83m)
(B) Sweet Sixteen	Afghan	PWAH230.AFGHAN	1¾ yards (1.60m)
(C) Sweet Sixteen	Beach	PWAH230.BEACH	1¾ yards (1.26m)
(D) Straight Shooter	Sorbet	PWAH227.SORBET	1 yard (0.91m)
(E) Belonging	Forest	PWAH126.FOREST	1½ yards (1.37m)
(F) Belonging	Juicy	PWAH126.JUICY	1½ yards (1.37m)
(G) Straight Shooter	Suede	PWAH227.SUEDE	1½ yards (1.37m)
(H) Slightly Biased	Forest	PWAH229.FOREST	1 yard (0.91m)
(I) Slightly Biased	Taffy	PWAH229.TAFFY	1 yard (0.91m)
(J) Designer Essential Solids	Black	CSFSESS.BLACK*	¾ yard (0.69m)
(K) Marathon	Circus	PWAH228.CIRCUS	¼ yard (0.23m)
(L) Marathon	Vintage	PWAH228.VINTAGE	¼ yard (0.23m)

* includes binding

Backing (Purchased Separately)

44" (1.12m) wide

Cartwheels Maitai PWAH127.MAITAI 7½ yards (6.86m)

OR

108" (2.74m) wide

Cartwheels Cream QBAH011.CREAM 2½ yards (2.40m)

Additional Recommendations

- 100% cotton thread in colors to match
- 92" x 92" (2.33m x 2.33m) batting



(A)



(B)



(C)



(D)



(E)



(F)



(G)



(H)



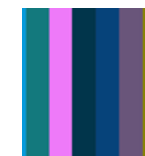
(I)



(J)



(K)



(L)



Backing

44"



Backing

108"

Cutting

Please note: all strips are cut across the width of fabric (WOF) from selvage-to-selvage edge unless otherwise noted.

Note: Cut pieces in the given order to make best use of fabric. Label cut pieces with letter identifier for easier assembly.

Fussy-cutting is a term used to describe the technique of cutting pieces from specific sections of the fabric, instead of cutting shapes and strips regardless of where the fabric's print falls. A simple fussy-cut highlights a motif centered within its shape. A more complex fussy-cut might use the fabric print placement to create a secondary design in the finished quilt. Refer to the finished quilt image (**Fig.1**) for help in determining the focus of your fussy-cut pieces.

Fig.1



Fabric A, fussy-cut:

- (1) 26½" center square
- (16) 6½" squares, centering each square on a floral motif
- (4) 3½" squares, centering each square on a floral motif

Fabric B, fussy-cut:

- (5) 6½" x WOF, centering the 6½" measurement on the line where two blocks of color meet; sub-cut
- (16) 6½" squares, centered on the point where four blocks of color meet to simulate a four-patch

Fabric C, fussy-cut:

- (4) 6½" x WOF, centering the 6½" measurement on the line where two blocks of color meet; sub-cut
- (12) 6½" squares, centered on the point where four blocks of color meet to simulate a four-patch

Fabric D, cut:

- (8) 3½" x LOF

Fabrics E and F, fussy-cut from each:

- (4) 6½" x WOF, centering on the striped sections running parallel to the selvage

Fabric G, fussy-cut:

- (4) 6½" x WOF, centering the 6½" measurement on the line where two stripes meet, and matching colors to make two sets of two matching WOF pieces; sub-cut
- 6½" x 30½" rectangle from each WOF piece

Fabric H and I, cut from each:

- (2) 6½" x WOF
- From remaining yardage, cut:*
- (4) 6½" x LOF

Fabric J, cut:

- (9) 2½" x WOF for binding

Fabrics K and L, cut from each:

- (2) 2½" x WOF; sub-cut
- (1) 2½" x 30½" top/bottom border
- (1) 2½" x 26½" side border

Sewing

Note: All seam allowances are $\frac{1}{4}$ " (.64cm) unless otherwise noted. Sew pieces right sides together. Press seam allowances open unless otherwise indicated. Refer to the **Quilt Layout** (page 6) for border placement as needed.

1. Sew the **Fabric K** side border to the left side of the **Fabric A** center square. Press. Sew the **Fabric L** side border to the right side of the **Fabric A** center square. Press. Sew the **Fabric K** top/bottom border to the top edge of the center unit and the **Fabric L** top/bottom border to the bottom edge of the center unit. Press. Center unit measures $30\frac{1}{2}$ " square.
2. Sew matching **Fabric G** borders on opposite sides of the quilt center, orienting the borders so that the colors are mirrored across the quilt center. Press. Sew a $6\frac{1}{2}$ " **Fabric A** square to each short end of the remaining two **Fabric G** borders. Sew one pieced **Fabric G** border to the top edge and the other to the bottom edge of the quilt center. Press. Quilt Center will measure $42\frac{1}{2}$ " square.

3. Arrange (4) $6\frac{1}{2}$ " **Fabric B** squares and (3) **Fabric C** squares in a single horizontal row, alternating fabrics (**Fig. 2**). Sew the squares together along adjacent edges. Press. Make (4) **Fabric B/C** rows that measure $6\frac{1}{2}$ " x $42\frac{1}{2}$ ".

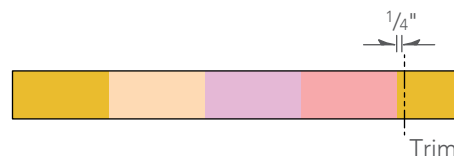
Fig. 2



B/C Row
Make 4.

4. Sew one **Fabric B/C** row to opposite sides of the quilt center. Press. Sew a $6\frac{1}{2}$ " **Fabric A** square to each short end of the remaining two **Fabric B/C** rows. Press. Sew one pieced **Fabric B/C** border to the top edge, and the other to the bottom edge of the quilt center that now measures $54\frac{1}{2}$ " square. Press.
5. Noting the color order of the $3\frac{1}{2}$ " x LOF **Fabric D** strips, trim one end of each strip $\frac{1}{4}$ " past the last complete color section (**Fig. 3**). Choosing two strips with non-matching full color sections, sew the trimmed ends of the two strips together to make one long **Fabric D** border. Press. Make a total of (4) long **Fabric D** borders.

Fig. 3

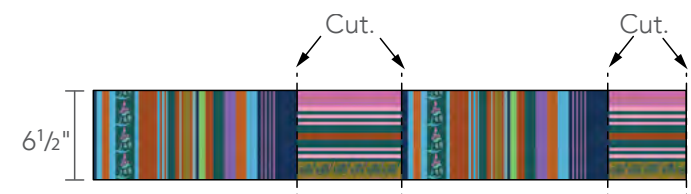


6. Arrange the long **Fabric D** borders along the outer edges of the quilt center to determine where you'd like the colors to start and stop. In **Fig. 1** (page 3), we opted to start with the same color that ends the adjacent side. Cut two side borders, $3\frac{1}{2}$ " x $54\frac{1}{2}$ ", and two top/bottom borders, also $3\frac{1}{2}$ " x $54\frac{1}{2}$ ", from the long **Fabric D** borders.

Sew one side border to either side of the quilt center. Press. Sew a $3\frac{1}{2}$ " **Fabric A** square to each end of the top/bottom **Fabric D** borders. Press. Then sew one border to the top edge and the other to the bottom edge of the quilt center which now measures $60\frac{1}{2}$ " square. Press.

7. Trim away sections of the $6\frac{1}{2}$ " x WOF **Fabric E** pieces where the stripes run horizontally, so that all stripes run parallel to the $6\frac{1}{2}$ " measurement (**Fig. 4**). Sew the remaining pieces together, end to end, making a $6\frac{1}{2}$ "-wide piece of parallel stripes. Press. Cut (2) $6\frac{1}{2}$ " x $60\frac{1}{2}$ " **Fabric E** borders.

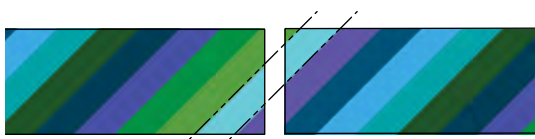
Fig. 4



Repeat with the 6½" x WOF **Fabric F** pieces, to make (2) 6½" x 60½" **Fabric F** borders. Sew one **Fabric E** border to opposite sides of the quilt center. Press. Sew a 6½" **Fabric A** square to each end of the **Fabric F** borders. Press. Sew one **Fabric F** border to the top edge and the other to the bottom edge of the quilt center which now measures 72½". Press.

8. Arrange (2) 6½" x LOF **Fabric H** pieces, end to end, with the diagonal stripes running in the same direction. Matching the diagonally striped fabric as much as possible, sew the two **Fabric H** pieces together along one short end (**Fig. 5**). Press. Repeat with the two remaining 6½" x LOF **Fabric H** pieces.

Fig. 5



Align diagonal stripes before sewing ends together.

9. Arrange (1) step 8 pieced **Fabric H** strip and (1) 6½" x WOF **Fabric H** piece, end to end, so that diagonal stripes on the fabric form a chevron design (**Fig. 6**). Sew the pieces together along adjacent edges. Press. Trim the border to 6½" x 72½", with the chevron at the center of the strip length. Make (2) **Fabric H** borders.

Fig. 6



Arrange strips so fabric print creates a chevron design.

10. Repeat steps 8 and 9 to make (2) **Fabric I** borders.
11. Sew one **Fabric H** border to opposite sides of the quilt center, making sure the chevron motifs point toward the outer edges of the quilt. Press.

Sew a 6½" **Fabric A** square to each end of the **Fabric I** pieced borders. Press. With the chevron motifs pointing toward the outer edges of the quilt, sew one border to the top edge and the other to the bottom edge of the quilt center to complete the quilt top. Quilt top will measure 84½" square. Press.

Finishing

12. Sew together the (9) 2½" x WOF (6.35cm x WOF) **Fabric J** binding strips end to end using diagonal seams. Press the seams open. Press the binding strip in half wrong sides together.
13. Layer the backing (wrong side up), batting, and quilt top (right side up). Baste the layers together and quilt as desired. Trim excess batting and backing even with the top of the quilt through all layers matching all raw edges. Miter corners. Stop approximately 12" from where you started. Lay both loose ends of binding flat along quilt edge. Where these two loose ends meet, fold them back on themselves and press to form a crease. Using this crease as your stitching line, sew the two open ends of the binding together right sides together. Trim seam to ¼" (.64cm) and press open. Finish sewing binding to quilt.
14. Turn the binding to the back of the quilt and hand or machine stitch in place.

Quilt Layout

