

Free Spirit



Featuring *A Spring in Paris* by Nathalie Lete for Conservatory Craft

Archie Quilt

Finished Size: 70" x 70" (1.78m x 1.78m)

Project designed by Penelope Handmade

Purchase pattern at penelopehandmade.com

Technique: Pieced | Skill Level: Advanced Beginner

freespiritfabrics.com

Fabric Requirements

DESIGN	COLOR	ITEM ID	YARDAGE
(A) Dream	Cream	PWNL039.CREAM	1 yard (0.91m)
(B) Dream	Grape	PWNL039.GRAPE	FQ (45.72cm x 53.34cm)
(C) Hatbox	Jade	PWNL040.JADE	FQ (45.72cm x 53.34cm)
(D) Hatbox	Pink	PWNL040.PINK	FQ (45.72cm x 53.34cm)
(E) Papillons	Green	PWNL041.GREEN	FQ (45.72cm x 53.34cm)
(F) Sightseeing	Multi	PWNL042.MULTI	FQ (45.72cm x 53.34cm)
(G) Sightseeing Tonal	Azul	PWNL043.AZUL	FQ (45.72cm x 53.34cm)
(H) Sightseeing Tonal	Orange	PWNL043.ORANGE	FQ (45.72cm x 53.34cm)
(I) Tiger Eye	Rust	PWNL044.RUST	FQ (45.72cm x 53.34cm)
(J) Designer Essential Solid	Black	CSFSESS.BLACK	3¾ yards (3.43m)
(K) Designer Essential Solid	Crush	CSFSESS.CRUSH*	½ yard (0.46m)

* includes binding

Backing (Purchased Separately)

44" (1.12m) wide

Dream Grape PWNL039.GRAPE 4¼ yards (3.89m)

OR

108" (2.74m) wide

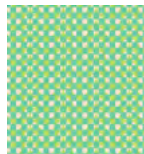
Delphinium Jewel QBAH004.JEWEL 2⅞ yards (1.94m)



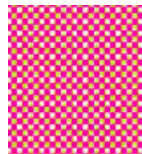
(A)



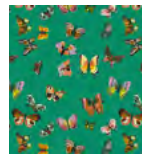
(B)



(C)



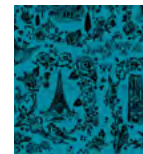
(D)



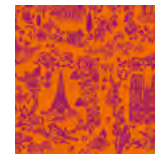
(E)



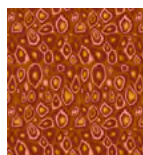
(F)



(G)



(H)



(I)



(J)



(K)



Backing
44"



Backing
108"

If kitting, refer to the final pattern for yardage amounts, it is recommended that a sample is made to confirm accuracy.