



Featuring In the Pink by Este MacLeod

Around the Block Quilt

Finished Size: $34\frac{1}{2}$ " x $34\frac{1}{2}$ " (87.63cm x 87.63cm)

Project designed by *It's Sew Emma*

Purchase pattern at itssewemma.com

Technique: Pieced | Skill Level: Advanced Beginner



Around the Block Quilt

Fabric Requirements

DESIGN	COLOR	ITEM ID	YARDAGE
(A) Cosmo	MULTI	PWES013.MULTI	FQ (45.72cm x 53.34cm)
(B) Anemones	MULTI	PWES014.MULTI	FQ (45.72cm x 53.34cm)
(C) Peche	MULTI	PWES016.MULTI	FQ (45.72cm x 53.34cm)
(D) Dolche	PINK	PWES020.PINK	FQ (45.72cm x 53.34cm)
(E) Sabah	GREEN	PWES021.GREEN*	½ yard (0.46m)
(F) Petals	GREEN	PWES022.GREEN	FQ (45.72cm x 53.34cm)
(G) Fizzy	PINK	PWES024.PINK	⅔ yard (0.61m)

* includes binding

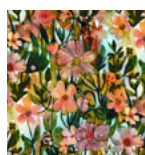
Backing (Purchased Separately)

44" (1.12m) wide

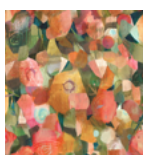
Piazzè	MULTI	PWES018.MULTI	1¼ yards (1.14m)
--------	-------	---------------	------------------



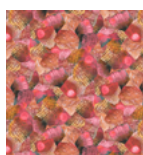
(A)



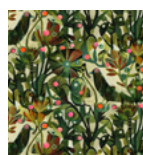
(B)



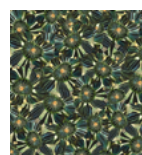
(C)



(D)



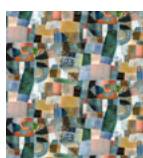
(E)



(F)



(G)



Backing
44"

*If kitting, refer to the final pattern for yardage amounts,
it is recommended that a sample is made to confirm accuracy.*