

Featuring Sea Sisters by Shell Rummel

Beach Pebbles Quilt

Finished Size: 60" (1.52m) Square

Project designed by Natalie Crabtree

Purchase pattern at shellrummel.com

Technique: Pieced | Skill Level: Advanced Beginner



Beach Pebbles Quilt

Fabric Requirements

DESIGN	COLOR	ITEM ID	YARDAGE
(A) Low Tide	DUSKYBLUE	PWSR069.DUSKYBLUE	1¼ yards (1.14m)
(B) Sea Wall	AZURE	PWSR070.AZURE*	1⅝ yards (1.49m)
(C) Dunes	MARINE	PWSR076.MARINE	¼ yard (0.23m)
(D) Sanibel	OCEAN	PWSR078.OCEAN	1¼ yards (1.14m)
(E) Designer Essential Solids	WINTER WHITE	CSFSESS.WINTE	1 yard (0.91m)

* includes binding

Backing (Purchased Separately)

44" (1.12m) wide

Crest

OR

108" (2.74m) wide

Watercolor Urchins

Silver

PWSR073.SILVER

4 yards (3.66m)

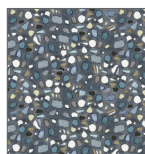
Salt

QBSR002.SALT

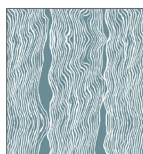
2 yards (1.83m)



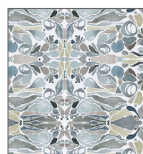
(A)



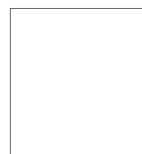
(B)



(C)



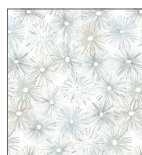
(D)



(E)



Backing
44"



Backing
108"

*If kitting, refer to the final pattern for yardage amounts,
it is recommended that a sample is made to confirm accuracy.*