



Plaid Quilt

**Featuring Kaleidoscope by
Billy Reue**

Big blocks make quick work of this quilt. Simple squares and rectangles make piecing easy, while slightly unexpected sizes create an interesting design.

Technique: Pieced

Skill Level: Advanced Beginner

Finished Size of Project:

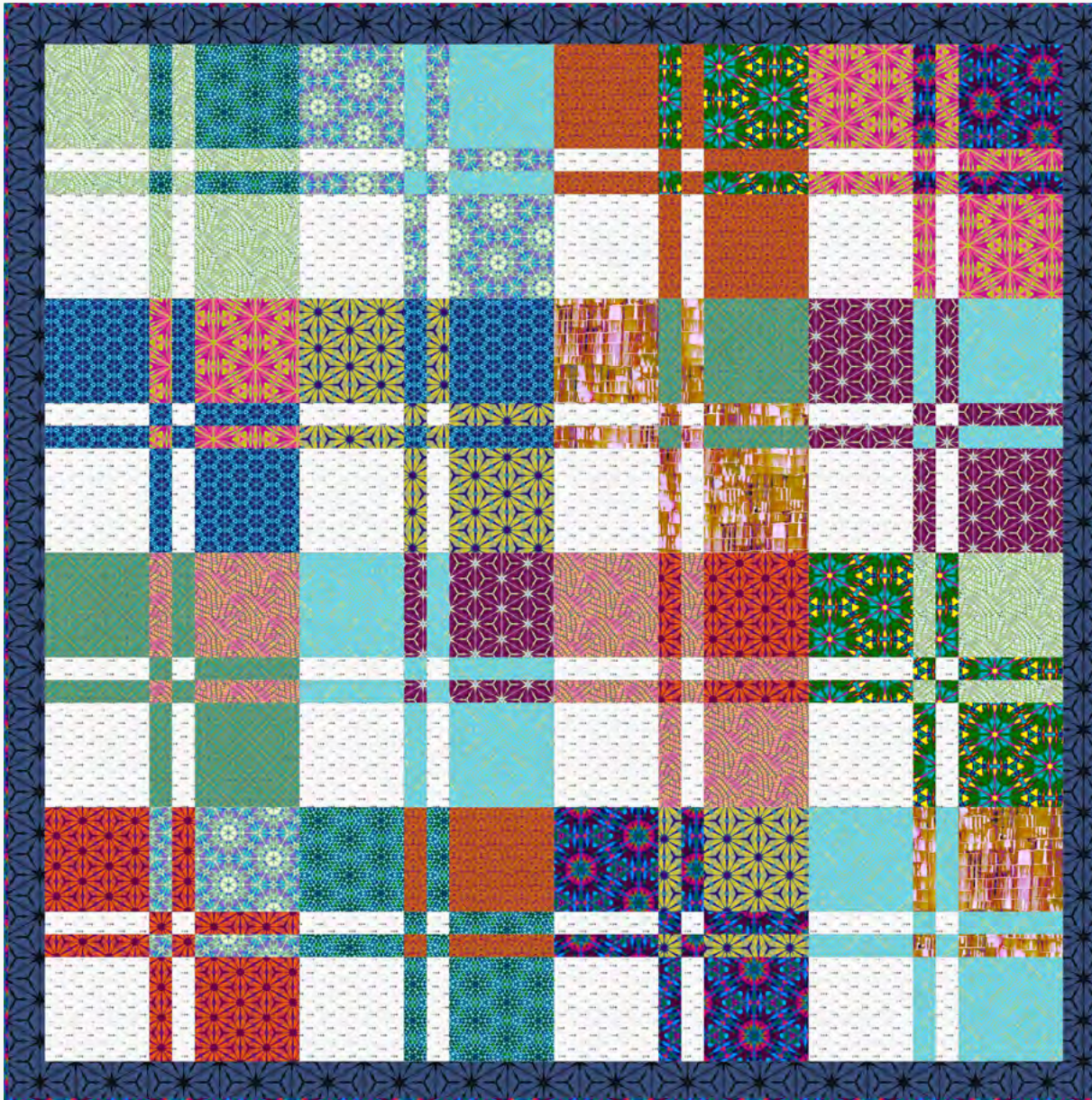
60" x 60" (1.52m x 1.52m)

Finished Block Size:

14" x 14" (35.56cm x 35.56cm)

Project designed by: Billy Reue

All possible care has been taken to ensure the accuracy of this pattern. We are not responsible for printing errors or the manner in which individual work varies. Please read the instructions carefully before starting this project. If kitting, it is recommended a sample is made to confirm accuracy.



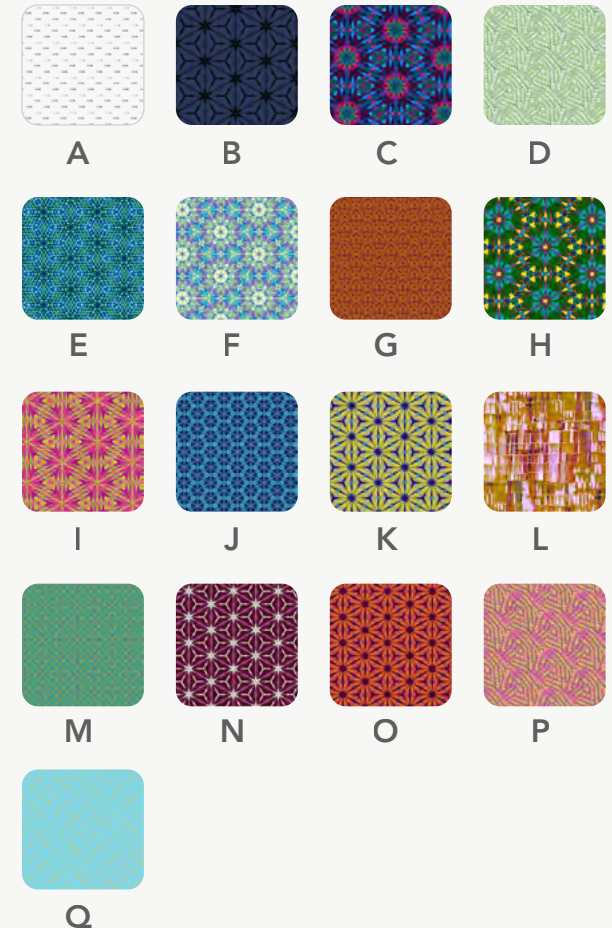
FABRIC REQUIREMENTS (Tech edited by: Julie Kentner)

	Design	Color	Item ID	Yardage
A	Dotty	Fog	PWFS056.FOG	1 yard (0.91m)
B	Bloom	Nocturnal	PWWR055.NOCTURNAL	5/8 yard (0.57m)
C	Supernova	Royal	PWWR053.ROYAL*	7/8 yard (0.80m)
D	Shimmer	Seafoam	PWWR062.SEAFOAM	1/4 yard (0.23m)
E	Magentic	Viridian	PWWR059.VIRIDIAN	1/4 yard (0.23m)
F	Sparkle	Twilight	PWWR057.TWILIGHT	1/4 yard (0.23m)
G	Cornered	Saffron	PWWR068.SAFFRON	1/4 yard (0.23m)
H	Carnival	Psychedelic	PWWR063.PSYCHEDELIC	1/4 yard (0.23m)
I	Honeycomb	Confetti	PWWR066.CONFETTI	1/4 yard (0.23m)
J	Cristalla	Sapphire	PWWR054.SAPPHIRE	1/4 yard (0.23m)
K	Pinwheel	Daisy	PWWR064.DAISY	1/4 yard (0.23m)
L	Quarry	Rosegold	PWWR067.ROSEGOLD	1/4 yard (0.23m)
M	Vintage	Olivine	PWWR060.OLIVINE	1/4 yard (0.23m)
N	Amaryllis	Claret	PWWR056.CLARET	1/4 yard (0.23m)
O	Gerbera	Flame	PWWR065.FLAME	1/4 yard (0.23m)
P	Glitter	Fairy	PWWR061.FAIRY	1/4 yard (0.23m)
Q	Princess Cut	Ice	PWWR058.ICE	1/2 yard (0.46m)

* includes binding

continued...

Swatches



FABRIC REQUIREMENTS (continued...)

Backing (Purchased Separately)

44" (1.12m) wide

Honeycomb	Confetti	PWWR066.CONFETTI	3¾ yards
(3.43m)			



44"



108"

OR

108" (2.74m) wide

Millefiore	Pastel	QBGP006.PASTEL	2 yards (1.83m)
------------	--------	----------------	-----------------

ADDITIONAL REQUIREMENTS

- 100% cotton thread in colors to match
- 68" x 68" (1.73m x 1.73m) batting

CUTTING

WOF = Width of Fabric

Label cut pieces with fabric letter identifier for easier assembly.

Fabric A, cut:

(5) $6\frac{1}{4}$ " x WOF; sub-cut

(16) $6\frac{1}{4}$ " squares

(32) $6\frac{1}{4}$ " x $1\frac{3}{4}$ " rectangles

From remaining fabric, cut: (16) $1\frac{3}{4}$ " squares

Fabric B, cut:

(7) $2\frac{1}{2}$ " x WOF for borders

Fabric C, cut:

(1) $6\frac{1}{4}$ " x WOF; sub-cut

(3) $6\frac{1}{4}$ " squares

(6) $6\frac{1}{4}$ " x $1\frac{3}{4}$ " rectangles

(3) $1\frac{3}{4}$ " squares

(7) $2\frac{1}{2}$ " x WOF for binding

Fabrics D through P, cut from each:

(1) $6\frac{1}{4}$ " x WOF; sub-cut

(3) $6\frac{1}{4}$ " squares

(6) $6\frac{1}{4}$ " x $1\frac{3}{4}$ " rectangles

(3) $1\frac{3}{4}$ " squares

Fabric Q, cut:

(2) $6\frac{1}{4}$ " x WOF; sub-cut

(6) $6\frac{1}{4}$ " squares

(12) $6\frac{1}{4}$ " x $1\frac{3}{4}$ " rectangles

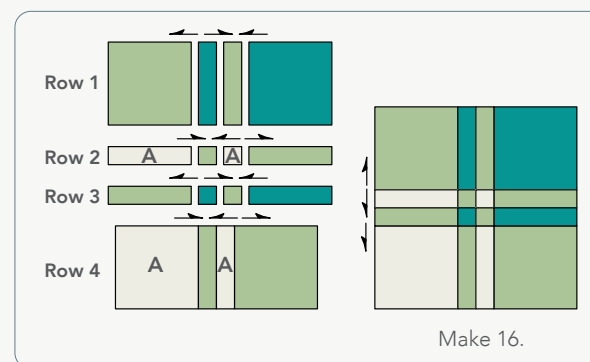
(6) $1\frac{3}{4}$ " squares

SEWING

All seam allowances are $\frac{1}{4}$ " (.64cm) unless otherwise noted. Sew pieces right sides together (RST). Press seam allowances open unless otherwise indicated.

- 1 Each quilt block is made from three fabrics: a **Main** fabric, a **Secondary** fabric, and **Fabric A**, which appear in each block. Referring to the **Quilt Layout** (page 7) for fabric combinations, select (2) $6\frac{1}{4}$ " squares, (4) $6\frac{1}{4}$ " x $1\frac{3}{4}$ " rectangles and (2) $1\frac{3}{4}$ " squares of the **Main** fabric, (1) $6\frac{1}{4}$ " square, (2) $6\frac{1}{4}$ " x $1\frac{3}{4}$ " rectangles and (1) $1\frac{3}{4}$ " square of the **Secondary** fabric, and (1) $6\frac{1}{4}$ " square, (2) $6\frac{1}{4}$ " x $1\frac{3}{4}$ " rectangles and (1) $1\frac{3}{4}$ " square of **Fabric A** for each block.
- 2 Arrange the squares and rectangles for a single block in (4) rows, as shown (**Fig. 1**). Sew the squares and rectangles in each row together along adjacent edges. Press the seam allowances as indicated by the pressing arrows in the illustration. Sew Rows 2 and 3 together along adjacent edges, matching seam lines. Press the seam allowances toward Row 3. Sew Row 1 to the upper edge of Row 2. Press seam allowances toward Row 1. Sew Row 4 to the lower edge of Row 3. Press seam allowance toward Row 4. Repeat, using the fabric combinations noted in the **Quilt Layout**, to make a total of (16) blocks.

Fig. 1



Top Assembly

- 3 Referring to the **Quilt Layout** for block placement, arrange blocks in (4) rows of (4) blocks each. Sew the blocks in each row together along adjacent edges. Press seam allowances in alternating directions from row to row.
- 4 Sew the rows together along adjacent edges. Press seam allowances in one direction.
- 5 Sew (7) $2\frac{1}{2}$ " x WOF **Fabric B** border strips together, end to end. Press. Cut (2) side borders, $2\frac{1}{2}$ " x $56\frac{1}{2}$ " and (2) top/bottom borders, $2\frac{1}{2}$ " x $60\frac{1}{2}$ ". Sew one side border to either side of the quilt center. Press seam allowances toward the borders. Sew one top/bottom border to the upper edge, and the other to the lower edge of the quilt center to complete the quilt top. Press seam allowances toward the borders.

FINISHING

- 6 Sew together (7) 2½" **Fabric C** binding strips end-to-end using diagonal seams. Press seams open. Press the binding strip in half, wrong sides together, and set aside until quilt is ready for binding.
- 7 Once the top is complete it is ready for quilting! Quilts can be sent out for longarm quilting or you can quilt it yourself. If you are sending the quilt out, it is important to discuss backing and batting requirements with the quilter to ensure they have everything needed to properly finish the quilt.
- 8 If quilting yourself and using 44" fabric for backing, choose your favorite method for piecing (taking time to remove selvages), then layer, baste and quilt. Once finished, trim excess batting and backing and bind according to your favorite method.
- 9 To complete binding by hand, it must first be machine sewn to the quilt top. Leaving an 8" tail of binding, sew binding to top of quilt through all layers, matching raw edges. Miter corners. Stop approximately 12" from where you started. Lay both loose ends of binding flat along quilt edge. Where the two loose ends meet, fold each side back on themselves and press to form a crease. Using this crease as your stitching line, sew the two open ends of the binding together right sides together. Trim seam to ¼" and press seam open. The binding will naturally fold, wrong sides together, and lay along the quilt edge. Finish sewing binding to quilt. Turn and press the binding to the back of the quilt and hand stitch in place.
- 10 If machine binding, complete the steps above only attach the binding to the BACK of the quilt, turn and press to the front of the quilt and machine stitch in place.

Quilt Layout

