



Featuring Fluent by Anna Maria Horner

# Cadbury Cream Quilt

Finished Size: 75" x 85" (1.91m x 2.16m)

Project designed by Marcea Owen - Cotton Street Commons

Purchase pattern at [cottonstreetcommons.com](http://cottonstreetcommons.com)

Technique: Pieced | Skill Level: Advanced Beginner



# Cadbury Cream Quilt

## Fabric Requirements

DESIGN	COLOR	ITEM ID	YARDAGE
(A) Passport	Fuchsia	PWAH183.FUCHSIA	FQ (45.72cm x 53.34cm)
(B) Disco	Cotton Candy	PWAH184.COTTONCANDY	FQ (45.72cm x 53.34cm)
(C) Disco	Sea	PWAH184.SEA	FQ (45.72cm x 53.34cm)
(D) Incarnation	Afternoon	PWAH185.AFTERNOON	FQ (45.72cm x 53.34cm)
(E) Raiment	September	PWAH187.SEPTEMBER	FQ (45.72cm x 53.34cm)
(F) Raiment	May	PWAH187.MAY	FQ (45.72cm x 53.34cm)
(G) Tilt	Froth	PWAH192.FROTH	FQ (45.72cm x 53.34cm)
(H) Tilt	Lavender	PWAH192.LAVENDER	FQ (45.72cm x 53.34cm)
(I) Tilt	Navy	PWAH192.NAVY	½ yard (0.46m)
(J) Shot Cottons	Peacock	SCGP123.PEACOCK*	3¾ yards (3.43m)
(K) Shot Cottons	Glacier	SCGP124.GLACIER	1¼ yards (1.14m)

\* includes binding

## Backing (Purchased Separately)

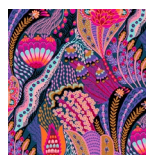
**44" (1.12m) wide**

Passport Amber PWAH183.AMBER 5¼ yards (4.80m)

**OR**

**108" (2.74m) wide**

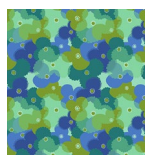
Passport Cream QBAH007.CREAM 2¾ yards (2.17m)



(A)



(B)



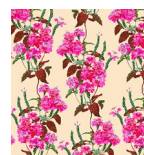
(C)



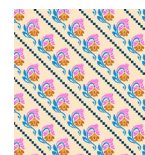
(D)



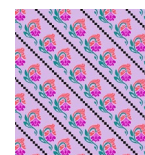
(E)



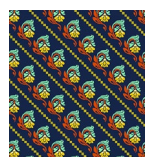
(F)



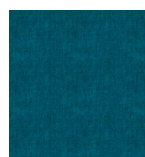
(G)



(H)



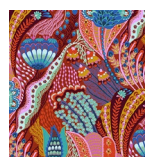
(I)



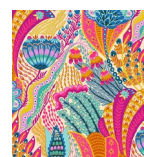
(J)



(K)



Backing  
44"



Backing  
108"

*If kitting, refer to the final pattern for yardage amounts,  
it is recommended that a sample is made to confirm accuracy.*