



Featuring Winter Joy by Cori Dantini

## Cascade Quilt

Finished Size: 57" x 63" (1.45m x 1.60m)

Project designed by Lisa Alley - Bear Hug Quiltworks

Purchase pattern at [bearhugquiltworks.com](http://bearhugquiltworks.com)

Technique: Pieced | Skill Level: Advanced Beginner

## Fabric Requirements

DESIGN	COLOR	ITEM ID	YARDAGE
(A) All Things Christmas	WHITE	PWCD097.XWHITE	$\frac{3}{8}$ yard (0.34m)
(B) Bough	RED	PWCD098.XRED	$\frac{3}{8}$ yard (0.34m)
(C) Pine Cones and Stars	GREEN	PWCD099.XGREEN	$\frac{3}{8}$ yard (0.34m)
(D) Sweet Tree	HUNTER	PWCD100.XHUNTER	$\frac{3}{8}$ yard (0.34m)
(E) Snow Drops	RED	PWCD101.XRED	$\frac{3}{8}$ yard (0.34m)
(F) Flurries	CHARCOAL	PWCD102.XCHARCOAL	$\frac{3}{8}$ yard (0.34m)
(G) Flying Floral	FOREST	PWCD103.XFOREST	$\frac{3}{8}$ yard (0.34m)
(H) Holiday Check	MULTI	PWCD104.XMULTI*	$\frac{3}{4}$ yard (0.69m)
(I) Snow Globe	BLACK	PWCD105.XBLACK	$\frac{2}{3}$ yard (0.61m)
(J) Snowy Winter	ICE	PWCD107.XICE	$\frac{3}{8}$ yard (0.34m)
(K) Dancing Snowflake	WHITE	PWCD108.XWHITE	2 yards (1.83m)

\* includes binding

## Backing (Purchased Separately)

**44" (1.12m) wide**

Sweet Tree

HUNTER

PWCD100.XHUNTER

4 yards (3.66m)

**OR**

**108" (2.74m) wide**

2 yards (1.83m)



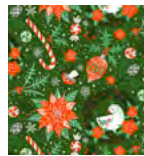
(A)



(B)



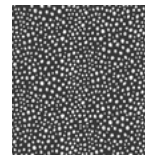
(C)



(D)



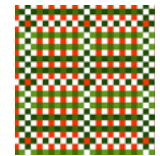
(E)



(F)



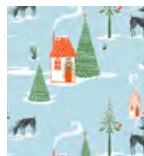
(G)



(H)



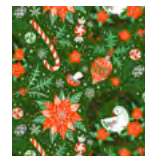
(I)



(J)



(K)



Backing  
44"

*If kitting, refer to the final pattern for yardage amounts, it is recommended that a sample is made to confirm accuracy.*