



Featuring Find the Birds by Este Macleod

## Center Stage Quilt

Finished Size: 70" x 85" (1.78m x 2.16m)

Project designed by Lisa Alley - Bear Hug Quiltworks

Purchase pattern at [bearhugquiltworks.com](http://bearhugquiltworks.com)

Technique: Pieced | Skill Level: Advanced Beginner



## Fabric Requirements

DESIGN	COLOR	ITEM ID	YARDAGE
(A) Bright Garden	Blue	PWES001.BLUE	½ yard (0.46m)
(B) Find the Birds	Green	PWES002.GREEN	½ yard (0.46m)
(C) Happy Day	Multi	PWES003.MULTI	½ yard (0.46m)
(D) Raspberry Rouge	Red	PWES004.RED	½ yard (0.46m)
(E) Flora Nera	Black	PWES005.BLACK	½ yard (0.46m)
(F) Cuore	Raspberry	PWES007.RASPBERRY*	4⅞ yards (3.77m)
(G) Verde	Green	PWES008.GREEN	⅝ yard (0.57m)
(H) Terrarium	Green	PWES009.GREEN	⅝ yard (0.57m)
(I) Confetti	Blue	PWES010.BLUE	½ yard (0.46m)
(J) Sesamo	Air	PWES012.AIR	⅝ yard (0.57m)

\* includes binding

## Backing (Purchased Separately)

**44" (1.12m) wide**

Flora Bianca

White

PWES006.WHITE

5 yards (4.57m)

**OR**

**108" (2.74m) wide**

2½ yards (2.29m)



(A)



(B)



(C)



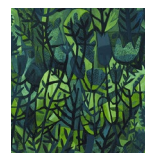
(D)



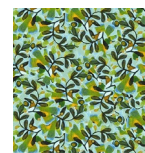
(E)



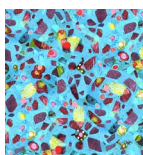
(F)



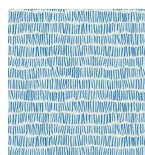
(G)



(H)



(I)



(J)



Backing  
44"

*If kitting, refer to the final pattern for yardage amounts,  
it is recommended that a sample is made to confirm accuracy.*