



KAFFE
FASSETT
COLLECTIVE
for

Free Spirit

Charming Cool

Featuring The Kaffe Fassett
Collective February 2025

Collection: The Kaffe Fassett Collective
February 2025

Technique: Pieced

Skill Level: Advanced Beginner

Finished Size: 80" x 80" (2.03m x 2.03m)
Finished Block Size: 4½" x 4½" (11.43cm x 11.43cm)

All possible care has been taken to ensure the accuracy of this pattern. We are not responsible for printing errors or the manner in which individual work varies. Please read the instructions carefully before starting this project. If kitting, it is recommended a sample is made to confirm accuracy.

Project designed by Stacey Day | Tech edited by Julie Kentner

Fabric Requirements

DESIGN	COLOR	ITEM ID	YARDAGE
2.5" Design Roll	Cool	FB4DRGP.COOLFEB25	1 DR
5" Charm Pack	Cool	FB46CPGP.COOLFEB25	2 PACKS
(A) Gingham	Purple	PWBM089.PURPLE*	1¼ yards (1.14m)
(B) Millefiore	Green	GP92.GREE	2 yards (1.83m)

* includes binding

Backing (Purchased Separately)

44" (1.12m) wide

Gradi Floral Lime PWPJ053.LIME 7½ yards (6.86m)

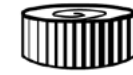
OR

108" (2.74m) wide

Gradi Floral Purple QBPJ005.PURPLE 2½ yards (2.29m)

Additional Recommendations

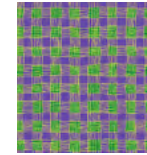
- 100% cotton thread in coordinating or neutral color
- 90" x 90" (2.29m x 2.29m) batting



Design Roll



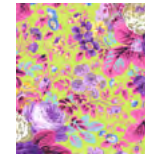
5" Charm Pack



(A)



(B)



Backing
44"



Backing
108"

Precut Organization

- Open and unroll the 2½" design roll. Keeping like fabrics together, and in order, separate into 15 stacks.
- Open each of the 5" charm packs and, keeping like fabrics together, separate and place with the matching 2½" design strips. (**Note:** Only 64 of the 5" charms will be used in the quilt top – save the extras for another project!)
- Label each stack Precut A, Precut B, etc. through Precut O. This step is very important as it will ensure the proper placement of fabrics throughout the quilt top during the assembly process.

Cutting

WOF = Width of Fabric

Fabric A Gingham-Purple:

(6) 2½" x WOF; remove selvages then sew together end to end and sub-cut

(2) 2½" x 56½"

(2) 2½" x 60½"

(9) 2½" x WOF for binding (Note: Cut fewer strips if using the leftover mitered border pieces to add into the binding, see step 6 for additional information)

Fabric B Millefiore-Green:

(7) 3" x WOF; sub-cut

(56) 3" x 5" rectangles

(10) 3" x WOF; remove selvages then sew together end to end and sub-cut

(7) 3" x 54" strips

(6) 1¾" x WOF; remove selvages then sew together end to end and sub-cut

(2) 1¾" x 54" strips

(2) 1¾" x 56½" strips

Instructions

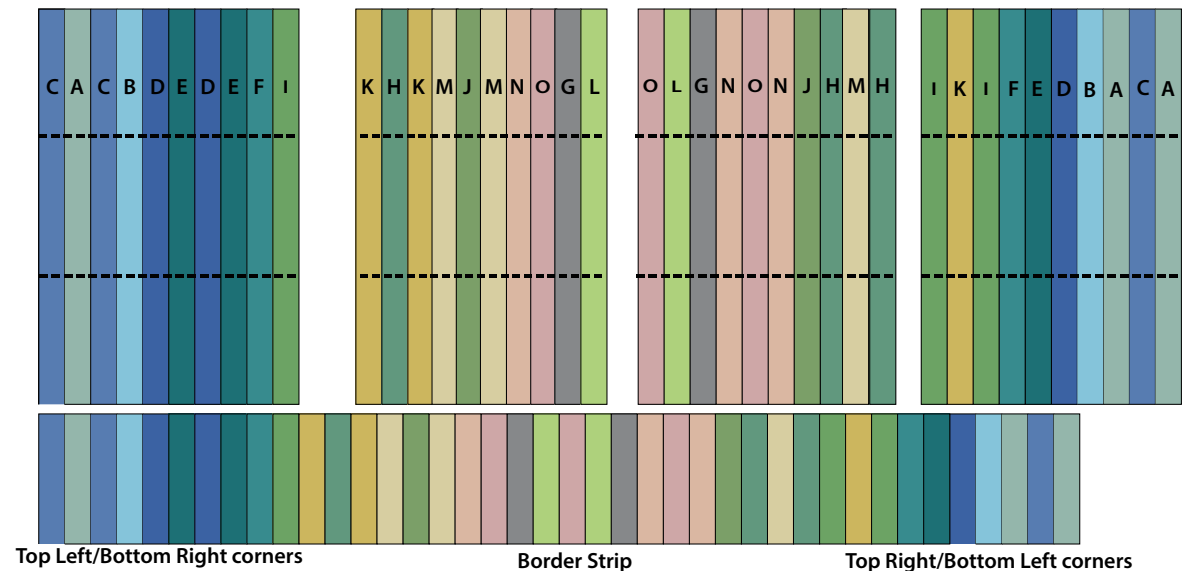
All seam allowances are ¼".

- Before sewing, organize individual 2½" design strips into (4) sets, keeping them in the following order:

Set 1	C	A	C	B	D	E	D	E	F	I
Set 2	K	H	K	M	J	M	N	O	G	L
Set 3	O	L	G	N	O	N	J	H	M	H
Set 4	I	K	I	F	E	D	B	A	C	A

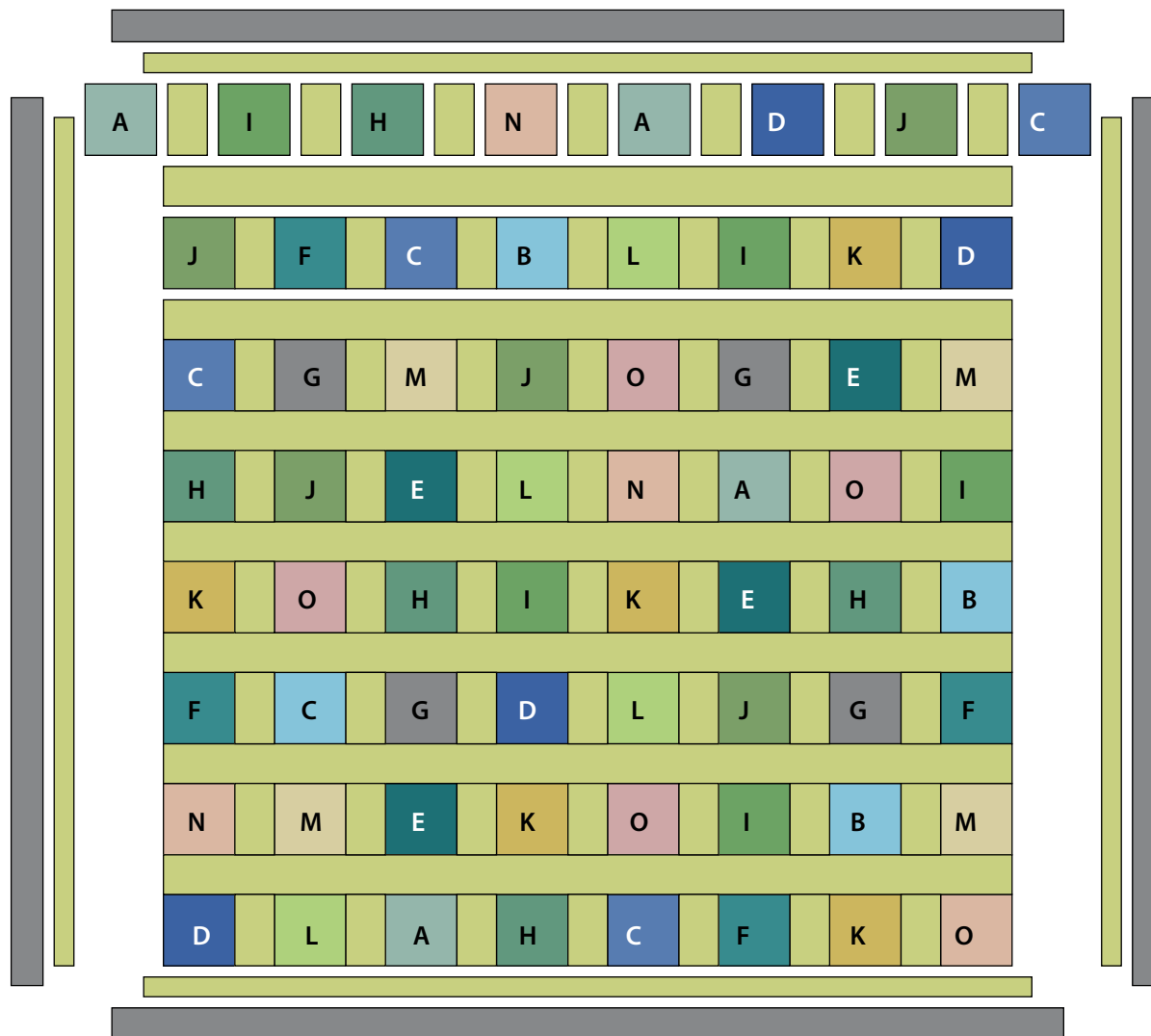
- Sew the 2½" x WOF design roll strips together into (4) strip sets as shown in **Figure 1**. Press seams open. From each strip set, cut (4) 20½" x 10½" segments. Sew one of each segment together in the order shown to make a Border Strip. Make (4) Border strips, marking the ends of each strip as shown in the diagram (Top Left/Bottom Right corner, Top Right/Bottom Left corner).

Fig. 1



3. Referring to the **Quilt Layout Figure 2** (right), sew the 5" charm squares together into (8) rows of (8) charms, with a **Fabric B** 3" x 5" rectangle between each square. Press towards **Fabric B**.
4. Sew the rows together following the Layout Diagram with a **Fabric B** 3" x 54" strip between rows to make the quilt top.
5. Sew the **Fabric B** 1¾" x 54" strips to the left and right sides of the quilt top. Press towards **Fabric B**. Next sew the **Fabric B** 1¾" x 56½" to the top and bottom of the quilt top. Press towards **Fabric B**.
6. Sew the **Fabric A** 2½" x 56½" strips to the left and right sides of the quilt top. Press towards **Fabric A**. Next sew the **Fabric A** 2½" x 60½" strips to the top and bottom of the quilt top. Press towards **Fabric A**.

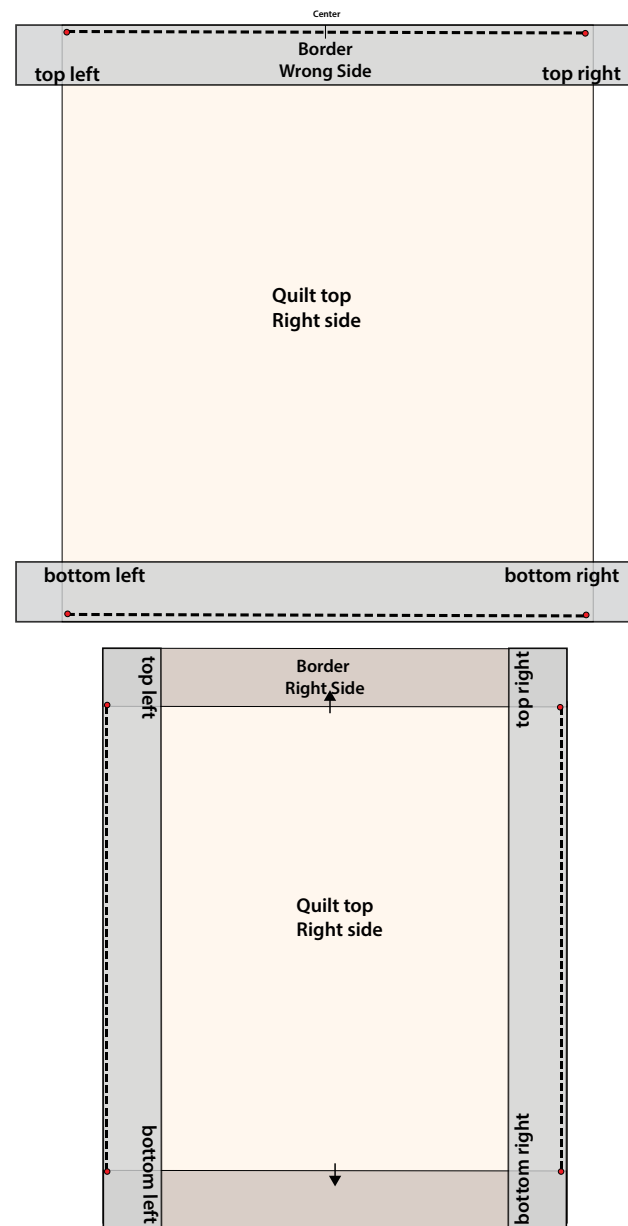
Fig. 2



Borders

7. Mark the $\frac{1}{4}$ " seam allowances in each corner and the centers on each side of the quilt top with a dot. Make note of and mark the top of the quilt. As shown in **Figure 3** (right), pin a border strip to the top, matching centers and the ends as marked (top left/top right) with 5 strips extending past the ends of the quilt. Sew, starting at the corner dot with a backstitch and ending at the opposite corner dot, also with a backstitch. Leave the seam allowances unsewn. Sew on the bottom strip in the same manner – pin a border strip to the bottom (bottom left/bottom right), matching centers and leaving 5 strips extending past the ends of the quilt. Sew, starting at the corner dot with a backstitch and ending at the opposite corner dot, also with a backstitch. Leave the seam allowances unsewn. Press towards borders. Attach the left and right borders in the same manner.

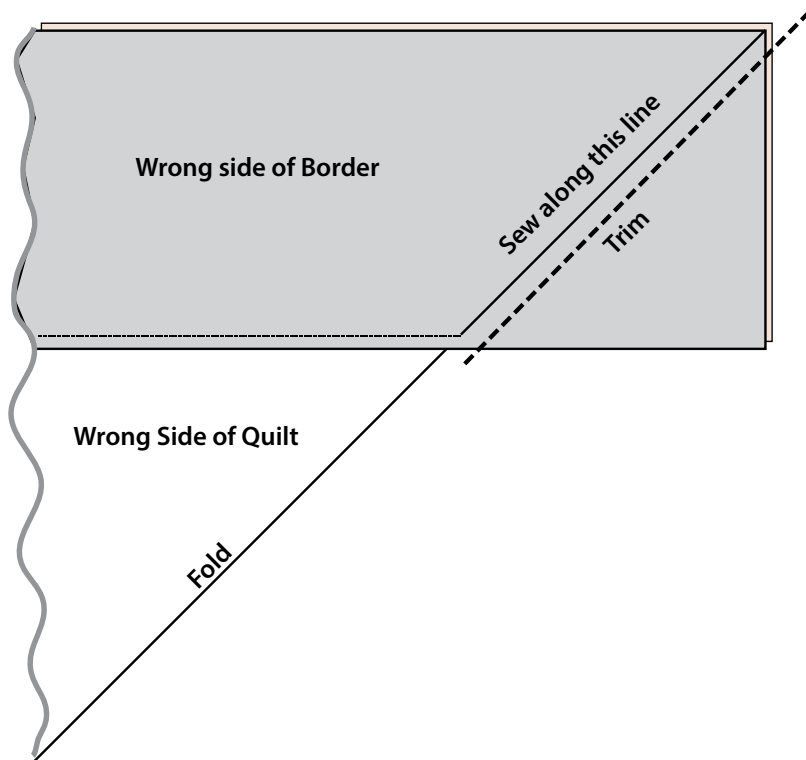
Fig. 3



8. To complete the mitered corners, fold the quilt in half on the diagonal. Line up the right sides of the adjacent border strips so they match as shown in **Figure 4**. Pin the seam allowances of the strips together. Draw a 45° diagonal line from the marked seam allowance to the raw edge of the border. Sew together on the line, trim the seam allowance to ¼", and press. Repeat these same steps for all 4 corners. **Note:** The trimmed pieces can be kept and cut into 2½" diagonal strips to add into the binding for a fun visual element!

Fig. 4

Mitered Border



Finishing

9. **Binding:** Sew together the (9) 2½" **Fabric A** binding strips end-to-end using diagonal seams. Press seams open, then press the binding strip in half wrong sides together. Set aside until the quilt is ready for binding.
10. Once the top is complete it is ready for quilting! Quilts can be sent out for longarm quilting or you can quilt it yourself. If you are sending the quilt out, it is important to discuss backing and batting requirements with the quilter to ensure they have everything needed to properly finish the quilt.
11. If quilting yourself and using 44" fabric for backing, choose your favorite method for piecing (taking time to remove selvages), then layer, baste and quilt. Once finished, trim excess batting and backing and bind according to your favorite method.
12. To complete binding by hand, it must first be machine sewn to the quilt top. Leaving an 8" tail of binding, sew binding to top of quilt through all layers, matching raw edges. Miter corners. Stop approximately 12" from where you started. Lay both loose ends of binding flat along quilt edge. Where the two loose ends meet, fold each side back on themselves and press to form a crease. Using this crease as your stitching line, sew the two open ends of the binding together right sides together. Trim seam to ¼" and press seam open. The binding will naturally fold, wrong sides together, and lay along the quilt edge. Finish sewing binding to quilt. Turn and press the binding to the back of the quilt and hand stitch in place.
13. If machine binding, complete the steps above only attach the binding to the **BACK** of the quilt, turn and press binding to the front of the quilt and machine stitch in place.