



Featuring Kaffe Fassett X Morris & Co., Kaffe Fassett Collective & Untamed by Tula Pink

Collective Garden Quilt

Finished Size: 70" x 80" (1.77m x 2.03m)

Project designed by Paper Pieces - Pattern adapted from Kim McLean Glorious Garden

Purchase pattern at paperpieces.com

Technique: English Paper Pieced | **Skill Level:** Intermediate

freespiritfabrics.com



Collective Garden Quilt

Fabric Requirements

DESIGN	COLOR	ITEM ID	YARDAGE
(A) Artichoke	Blue	PWKW001.BLUE	1/3 yard (0.30m)
(B) Artichoke	Lavender	PWKW001.LAVENDER	1/3 yard (0.30m)
(C) Blackthorn	Brown	PWKW002.BROWN	1/2 yard (0.46m)
(D) Blackthorn	Pink	PWKW002.PINK	1/2 yard (0.46m)
(E) Oak	Blue	PWKW003.BLUE	1/3 yard (0.30m)
(F) Oak	Purple	PWKW003.PURPLE	1/3 yard (0.30m)
(G) Oak	Turquoise	PWKW003.TURQUOISE	1/3 yard (0.30m)
(H) Oak	Violet	PWKW003.VIOLET	1/3 yard (0.30m)
(I) Bluebell	Purple	PWKW004.PURPLE	1/2 yard (0.46m)
(J) Indian	Lavender	PWKW005.LAVENDER	1/3 yard (0.30m)
(K) Indian	Pink	PWKW005.PINK	1/3 yard (0.30m)
(L) Acanthus	Cobalt	PWKW006.COBBALT	1/3 yard (0.30m)
(M) Acanthus	Jade	PWKW006.JADE	1/3 yard (0.30m)
(N) Michaelmas Daisy	Aqua	PWKW007.AQUA	1/3 yard (0.30m)
(O) Michaelmas Daisy	Cobalt	PWKW007.COBBALT	1/3 yard (0.30m)
(P) Michaelmas Daisy	Pink	PWKW007.PINK	1/3 yard (0.30m)
(Q) Granada	Purple	PWKW008.PURPLE	1/2 yard (0.46m)
(R) Branches	Blue	PWKW009.BLUE	1/3 yard (0.30m)
(S) Branches	Magenta	PWKW009.MAGENTA	1/3 yard (0.30m)
(T) Fruit	Cobalt	PWKW010.COBBALT	1/3 yard (0.30m)
(U) Fruit	Duckegg	PWKW010.DUCKEGG	1/3 yard (0.30m)
(V) Leicester	Aqua	PWKW011.AQUA	1/3 yard (0.30m)
(W) Leicester	Cobalt	PWKW011.COBBALT	1/3 yard (0.30m)
(X) Leicester	Fuchsia	PWKW011.FUCHSIA	1/3 yard (0.30m)
(Y) Strawberry Thief	Blue	PWKW013.BLUE	1 yard (0.91m)
(Z) Strawberry Thief	Aqua	PWKW013.AQUA	1 yard (0.91m)
Untamed Collection			
(AA) Impending Bloom	Nova	PWTP239.NOVA	1/3 yard (0.30m)
(AB) Impending Bloom	Cosmic	PWTP239.COSMIC	1/3 yard (0.30m)
(AC) Hello Dahlia	Moonbeam	PWTP234.MOONBEAM	1/3 yard (0.30m)
(AD) Hello Dahlia	Cosmic	PWTP234.COSMIC	1/3 yard (0.30m)
(AE) Daisy and Confused	Nova	PWTP236.NOVA	1/2 yard (0.46m)
(AF) Daisy and Confused	Moonbeam	PWTP236.MOONBEAM	1/2 yard (0.46m)
Re-Orderable			
(AG) Brassica	Yellow	PWPJ051.YELLOW	1/3 yard (0.30m)
(AH) Brassica	Green	PWPJ051.GREEN	1/3 yard (0.30m)
(AI) Brassica	Magenta	PWPJ051.MAGENTA	1/3 yard (0.30m)
(AJ) Brassica	Red	PWPJ051.REDXX	1/3 yard (0.30m)
(AK) Brassica	Purple	PWPJ051.PURPL	1/3 yard (0.30m)
(AL) Brassica	Blue	PWPJ051.BLUEX	1/3 yard (0.30m)
(AM) Brassica	Moss	PWPJ051.MOSSX	1/3 yard (0.30m)
(AN) Aboriginal Dot	Plum	GP71.PLUMX*	2 3/8 yards (2.17m)

* includes binding

Fabric Swatches on next page...



Collective Garden Quilt

Backing (Purchased Separately)

44" (1.12m) wide

Van Gogh

Blue

PWPJ111.BLUE

4¾ yards (4.34m)

OR

108" (2.74m) wide

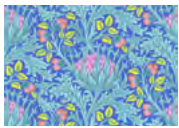
Brocade Peony

Natural

QBPJ004.NATURAL

2½ yards (2.29m)

Fabric Swatches



(A)



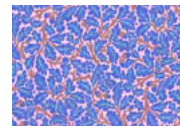
(B)



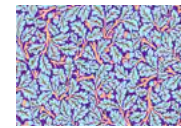
(C)



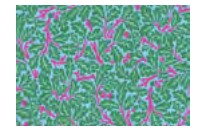
(D)



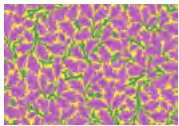
(E)



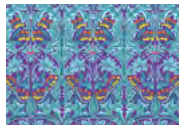
(F)



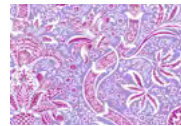
(G)



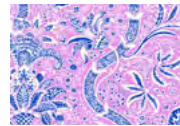
(H)



(I)



(J)



(K)



(L)



(M)



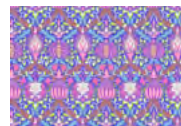
(N)



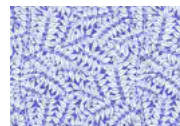
(O)



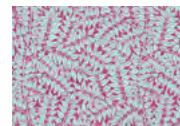
(P)



(Q)



(R)



(S)



(T)



(U)



(V)



(W)



(X)



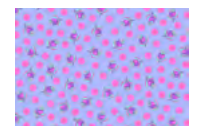
(Y)



(Z)



(AA)



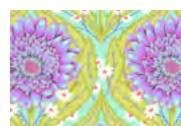
(AB)



(AC)



(AD)



(AE)



(AF)



(AG)



(AH)



(AI)



(AJ)



(AK)



(AL)



(AM)



Backing
44"



Backing
108"

If kitting, refer to the final pattern for yardage amounts, it is recommended that a sample is made to confirm accuracy.