



Featuring 12 Days of Christmas by Cori Dantini

Partridge in a Pear Tree Throw

Finished Size: 36" x 52" (.91m x 1.32m)

Project designed by Jenice Belling-Quilted Garden Designs

Purchase pattern at quiltedgarden.com

Technique: Pieced | Skill Level: Advanced Beginner



Partridge in a Pear Tree Throw

Fabric Requirements

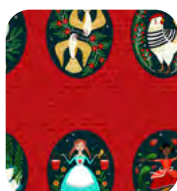
DESIGN	COLOR	ITEM ID	YARDAGE
(A) 12 Days of Christmas	Panel	PWCD130.XPANEL	1 PANEL
(B) Starlight Star Bright	Navy	PWCD133.XNAVY*	5/8 yard (0.57m)
(C) Meadows Daydreams	Jade	PWCD134.XJADE	1/2 yard (0.46m)
(D) Bluebells	Gold	PWCD135.XGOLD	1/4 yard (0.23m)
(E) Swan Lattice	Taupe	PWCD136.XTAUPE	5/8 yard (0.57m)
(F) Sing Along	Red	PWCD137.XRED	1/4 yard (0.23m)

* includes binding

Backing (Purchased Separately)

44" (1.12m) wide

True Love Gave to Me XMULTI PWCD131.XMULTI 2 yards (1.83m)



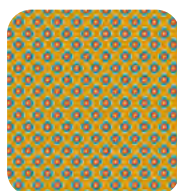
(A)



(B)



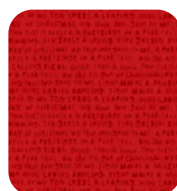
(C)



(D)



(E)



(F)



Backing
44"

*If kitting, refer to the final pattern for yardage amounts,
it is recommended that a sample is made to confirm accuracy.*