

Featuring Fluent by Anna Maria Horner

Coventry Garden Quilt

Finished Size: 76" x 88" (1.93m x 2.24m)

Project designed by Marcea Owen - Cotton Street Commons

Purchase pattern at cottonstreetcommons.com

Technique: Pieced | Skill Level: Advanced Beginner



Coventry Garden Quilt

Fabric Requirements

DESIGN	COLOR	ITEM ID	YARDAGE
(A) Passport	Fuchsia	PWAH183.FUCHSIA	$\frac{2}{3}$ yard (0.61m)
(B) Disco	Cotton Candy	PWAH184.COTTONCANDY	$\frac{2}{3}$ yard (0.61m)
(C) Disco	Sea	PWAH184.SEA	$\frac{3}{8}$ yard (0.34m)
(D) Incarnation	Afternoon	PWAH185.AFTERNOON	$\frac{1}{2}$ yard (0.46m)
(E) Incarnation	Midnight	PWAH185.MIDNIGHT	$\frac{1}{2}$ yard (0.46m)
(F) Small Incarnation	Morning	PWAH186.MORNING	$\frac{1}{2}$ yard (0.46m)
(G) Raiment	July	PWAH187.JULY	$\frac{1}{2}$ yard (0.46m)
(H) Raiment	September	PWAH187.SEPTEMBER	$\frac{1}{2}$ yard (0.46m)
(I) Raiment	May	PWAH187.MAY	$\frac{1}{2}$ yard (0.46m)
(J) Rose	Butterscotch	PWAH191.BUTTERSCOTCH	$\frac{1}{4}$ yard (0.23m)
(K) Rose	Plum	PWAH191.PLUM	$\frac{3}{8}$ yard (0.34m)
(L) Tilt	Navy	PWAH192.NAVY*	$1\frac{1}{8}$ yards (1.03m)
(M) Designer Essential Solids	Oasis	CSFSESS.OASIS	$3\frac{1}{4}$ yards (2.97m)
(N) Designer Essential Solids	Saffron	CSFSESS.SAFFR	$\frac{1}{4}$ yard (0.23m)

* includes binding

Backing (Purchased Separately)

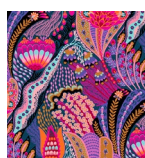
44" (1.12m) wide

Raiment September PWAH187.SEPTEMBER $5\frac{1}{4}$ yards (4.79m)

OR

108" (2.74m) wide

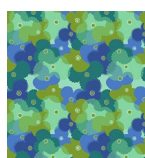
Passport Cream QBAH007.CREAM $2\frac{1}{2}$ yards (2.29m)



(A)



(B)



(C)



(D)



(E)



(F)



(G)



(H)



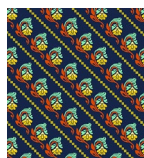
(I)



(J)



(K)



(L)



(M)



(N)



Backing
44"



Backing
108"

*If kitting, refer to the final pattern for yardage amounts,
it is recommended that a sample is made to confirm accuracy.*