



Grey



Pink



Featuring February 2023 by Kaffe Fassett Collective

Crochet Quilt

(Grey or Pink)

Finished Size: 45" x 54" (1.14m x 1.37m)

Project designed by Tammy Silvers - Tamarinis

Purchase pattern at tamarinis.com

Technique: Pieced | Skill Level: Advanced Beginner



Crochet Quilt (Grey or Pink)

Grey

Fabric Requirements

DESIGN	COLOR	ITEM ID	YARDAGE
(A) Twig	Red	PWGP196.RED	½ yard (0.46m)
(B) Tonal Floral	Charcoal	PWGP197.CHARCOAL	½ yard (0.46m)
(C) Tonal Floral	Red	PWGP197.RED*	¾ yard (0.69m)
(D) Funky Flora	Grey	PWBM011.GREY	1¾ yards (1.60m)
(E) Shot Cotton	Shadow	SCGP108.SHADOW	½ yard (0.46m)

* includes binding

Backing (Purchased Separately)

44" (1.12m) wide

Fish Lips	Contrast	PWBM007.CONTRAST	3¼ yards (2.97m)
-----------	----------	------------------	------------------

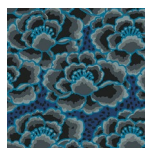
OR

108" (2.74m) wide

Tree Fungi	Contrast	QBPJ001.CONTRAST	1½ yards (1.37m)
------------	----------	------------------	------------------



(A)



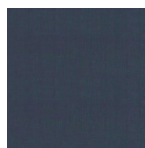
(B)



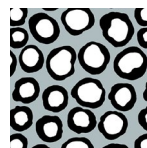
(C)



(D)



(E)



Backing
44"



Backing
108"

*If kitting, refer to the final pattern for yardage amounts,
it is recommended that a sample is made to confirm accuracy.*



Crochet Quilt (Grey or Pink)

Pink

Fabric Requirements

DESIGN	COLOR	ITEM ID	YARDAGE
(A) Twig	Pink	PWGP196.PINK	½ yard (0.46m)
(B) Tonal Floral	Red	PWGP197.RED*	¾ yard (0.69m)
(C) Funky Flora	Aqua	PWBM011.AQUA	1¾ yards (1.60m)
(D) Shot Cotton	Opal	SCGP114.OPAL	½ yard (0.46m)
(E) Shot Cotton	Lupin	SCGP113.LUPIN	½ yard (0.46m)

* includes binding

Backing (Purchased Separately)

44" (1.12m) wide

Tonal Floral	Red	PWGP197.RED	3¼ yards (2.97m)
--------------	-----	-------------	------------------

OR

108" (2.74m) wide

Millefiore	Pastel	QBG006.PASTEL	1½ yards (1.37m)
------------	--------	---------------	------------------



(A)



(B)



(C)



(D)



(E)



Backing
44"



Backing
108"

*If kitting, refer to the final pattern for yardage amounts,
it is recommended that a sample is made to confirm accuracy.*