

Curious by Nature Quilt

Featuring Featuring Abandoned 2 by
Tim Holtz

Texture target. Feast your eyes on these fabulous fabrics by Tim Holtz. Layers of light, scrapes, and scratches mingle with timeworn text in antiqued tones, and are perfectly displayed in this pattern's easy oversized blocks. Stitch this quilt in record time. We think it's spot on.



Collection: Featuring Abandoned 2 by
Tim Holtz

Technique: Curved Piecing

Skill Level: Advanced Beginner

Finished Size: Finished Size of Project:
62" x 62" (1.57m x 1.57m)
Finished Block Size:
31" x 31" (78.74cm x 78.74cm)

All possible care has been taken to assure the accuracy of this pattern. We are not responsible for printing errors or the manner in which individual work varies. Please read the instructions carefully before starting this project. If kitting, it is recommended a sample is made to confirm accuracy.

Project designed by FreeSpirit Fabrics | Tech edited by Alison M. Schmidt

Fabric Requirements

DESIGN	COLOR	ITEM ID	YARDAGE
(A) Cracked Shadow	Black	PWTH128.BLACK	1 yard (0.91m)
(B) London Gridlock	Neutral	PWTH127.NEUTRAL	1 yard (0.91m)
(C) Muted Medallions	Indigo	PWTH141.INDIGO	7/8 yard (0.80m)
(D) Fractured Mosaic	Indigo	PWTH130.INDIGO	7/8 yard (0.80m)
(E) Provisions	Onyx	PWTH115.8ONYX*	5/8 yard (0.57m)
(F) Dropcloth	Multi	PWTH137.MULTI	1/2 yard (0.46m)
(G) Urban Grunge	Patina	PWTH134.PATINA	1/2 yard (0.46m)
(H) Du Theatre	Neutral	PWTH139.NEUTRAL	1/2 yard (0.46m)
(I) Principal Methods	Moss	PWTH132.MOSS	1/2 yard (0.46m)
(J) Hotel Burgundy	Vineyard	PWTH145.VINEYARD	3/8 yard (0.34m)
(K) Rue le Peltier	Patina	PWTH142.PATINA	3/8 yard (0.34m)
(L) Gilded Mosaic	Gold	PWTH140.GOLD	3/8 yard (0.34m)
(M) Portland Street	Patina	PWTH131.PATINA	3/8 yard (0.34m)
(N) Scraped Layers	Sienna	PWTH144.SIENNA	1/4 yard (0.23m)
(O) Dyed Stripe	Multi	PWTH143.MULTI	1/4 yard (0.23m)
(P) Piano Sorte	Patina	PWTH138.PATINA	1/4 yard (0.23m)

* includes binding

Backing (Purchased Separately)

44" (111.76cm) wide

Dropcloth Multi PWTH137.MULTI 4 yards (3.66m)

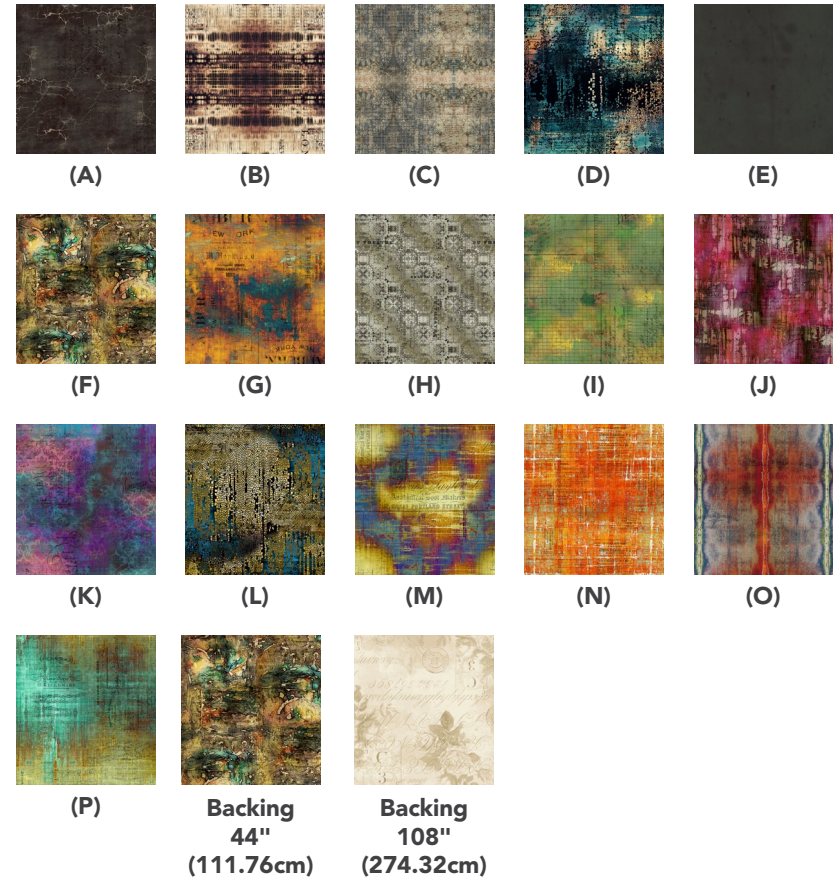
OR

108" (274.32cm) wide

Rose Parcel Taupe QBTH002.2TAUP 2 1/8 yards (1.94m)

Additional Recommendations

- 100% cotton thread in colors to match
- 70" x 70" (1.78m x 1.78m) batting



Preparation

Print the template pages on pages 6-18. Arrange the printed pages as shown in the **Template Construction Key** on page 5, and tape the pages together along adjacent edges. Cut out each template along the solid outer lines.

Cutting

Note: Refer to arrows on templates for grainline placement before cutting. Cut pieces with the non-printed side of the templates against the right side of the fabrics. To reverse Template 1, place the printed side of the template against the right side of the fabric before cutting. Handle pieces carefully to avoid stretching cut edges.

Fabric A, cut:

(2) Template 1

Fabrics B and C, cut from each:

(2) Template 1, reversed

Fabric D, cut:

(2) Template 1

(2) Template 4

Fabric E, cut:

(7) 2½" x width-of-fabric (WOF) for binding

Fabrics F, G, H, and I, cut from each:

(2) Template 2

Fabrics J, K, L, and M, cut from each:

(2) Template 3

Fabrics N, O, and P, cut from each:

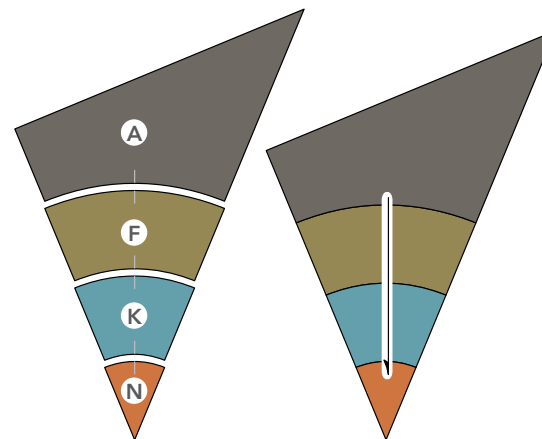
(2) Template 4

Sewing

All seam allowances are ¼" and pieces are sewn right sides together. Press seam allowances open unless otherwise indicated.

1. Arrange (1) **Fabric A** Template 1 piece, (1) **Fabric F** Template 2 piece, (1) **Fabric K** Template 3 piece, and (1) **Fabric N** Template 4 piece as shown (**Fig. 1**). Fold each piece wrong sides together along the curved edge and finger press the fold to temporarily mark the center of the curved edge. Pin pieces together along adjacent edges, matching marked centers and outer edges. Carefully sew pieces together along the curved edge. Press the seam allowances in one direction. Make 2 triangular units.

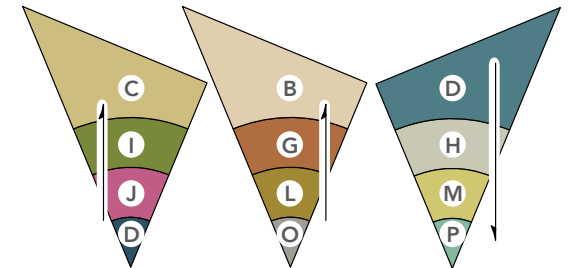
Fig. 1



Make 2.

2. Repeat step 1, using the pieces indicated below, and noting the indicated pressing directions (**Fig. 2**). Make 2 of each triangular unit.

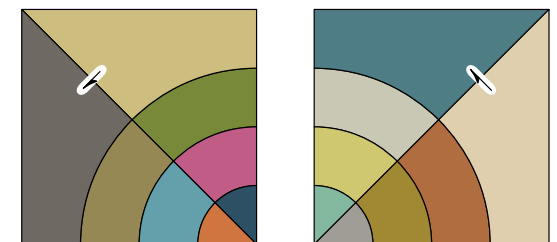
Fig. 2



Make 2 of each.

3. Place (1) **A/F/K/N** and (1) **C/I/J/D** triangular unit right sides together, matching outer edges and seam lines. Sew together along the longest edge (**Fig. 3**). Press the seam allowances to one side. Make two identical blocks. Repeat with the **D/H/M/P** and **B/G/L/O** triangular units to make two identical blocks.

Fig. 3



Make 2 of each block.

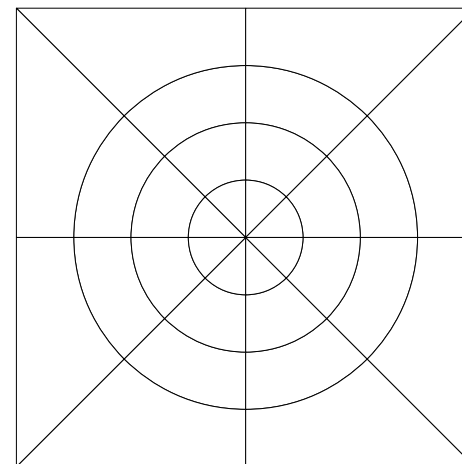
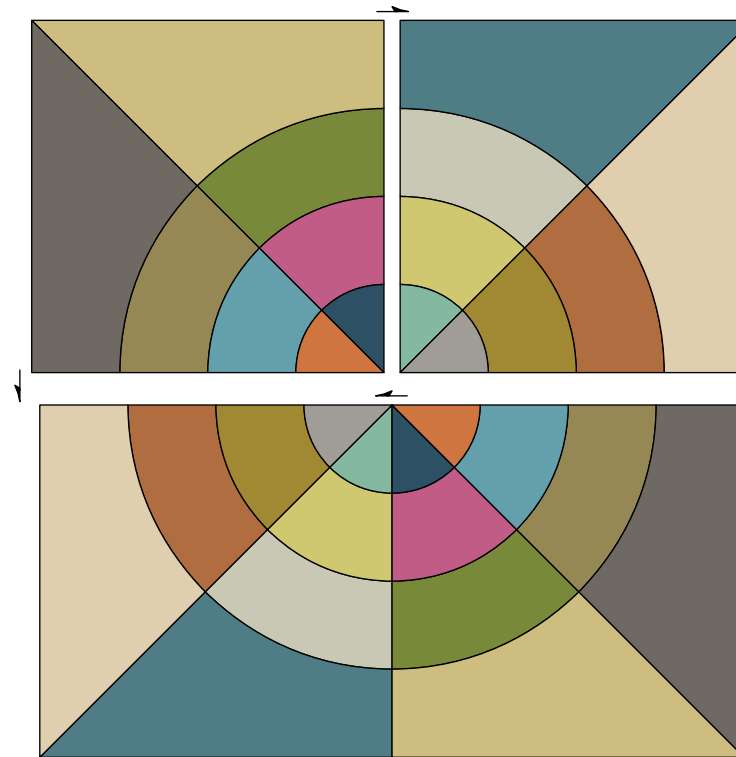
Assembly

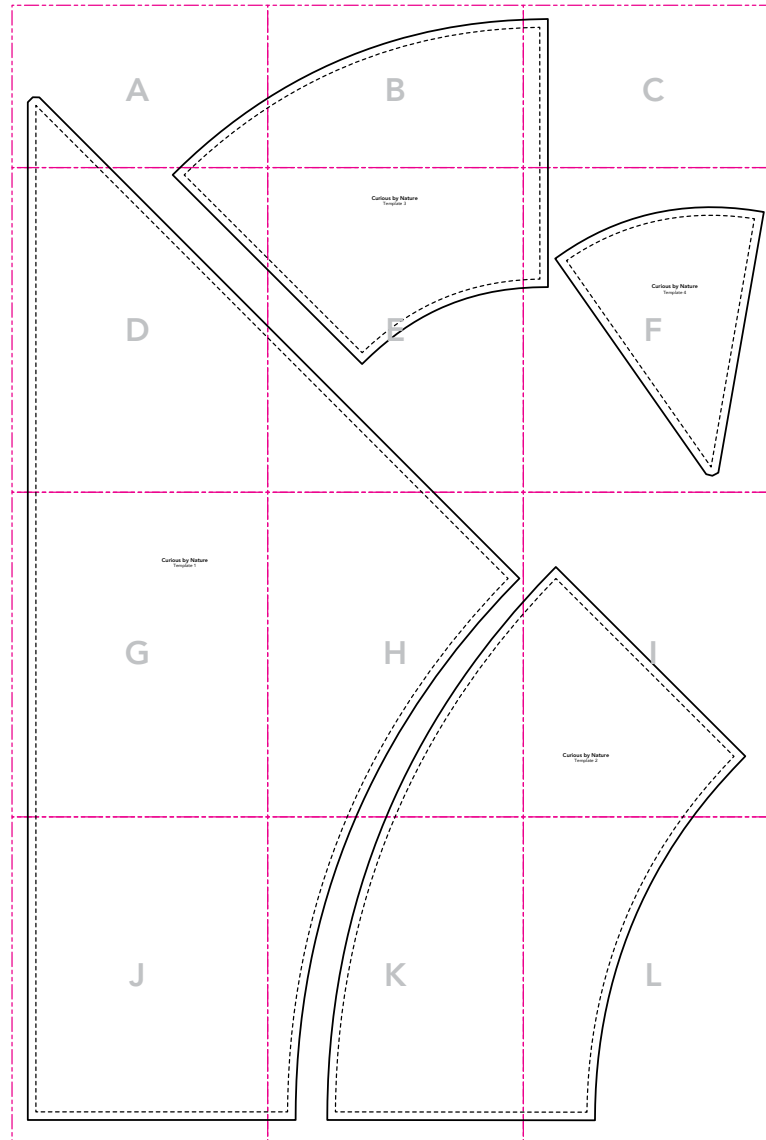
- Referring to the **Quilt Layout Diagram**, arrange the blocks in two rows of two blocks each. Sew the blocks in each row together. Press the seam allowances as indicated. Sew the rows together, matching seam lines, to complete the quilt top. Press the seam allowances in one direction.

Finishing

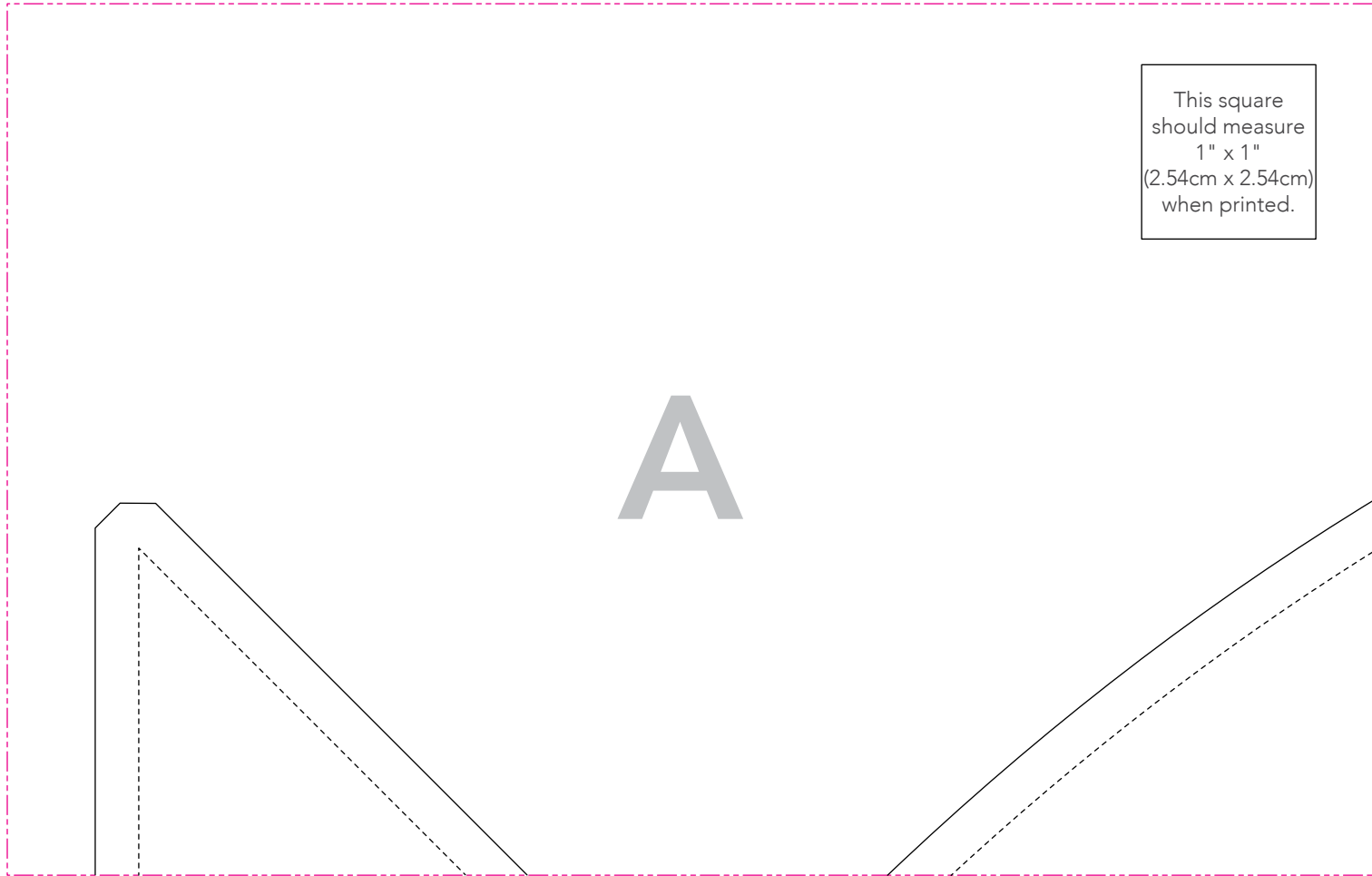
- Sew together the (7) 2½" x WOF **Fabric E** binding strips end-to-end using diagonal seams. Press the seams open. Press the binding strip in half wrong sides together.
- Layer the backing (wrong side up), batting, and quilt top (right side up). Baste the layers together and quilt as desired. Trim excess batting and backing even with the quilt top after quilting is completed.
- Leaving an 8" (20.32cm) tail of binding, sew binding to top of quilt through all layers matching all raw edges. Miter corners. Stop approximately 12" (30.48cm) from where you started. Lay both loose ends of binding flat along quilt edge. Where these two loose ends meet, fold them back on themselves and press to form a crease. Using this crease as your stitching line, sew the two open ends of the binding together right sides together. Trim seam to ¼" (.64cm) and press open. Finish sewing binding to quilt.
- Turn the binding to the back of the quilt and hand stitch in place.

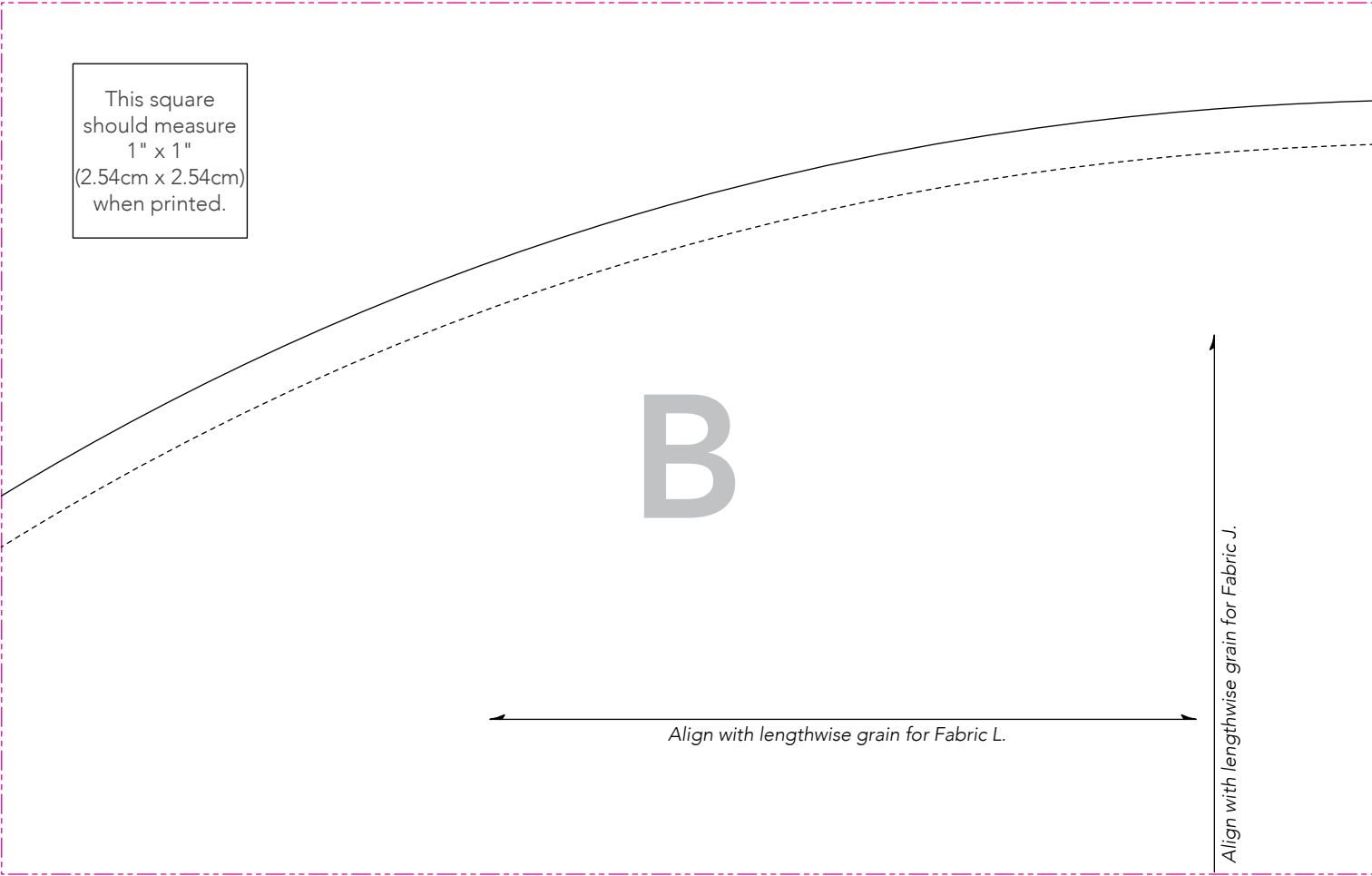
Quilt Layout Diagram

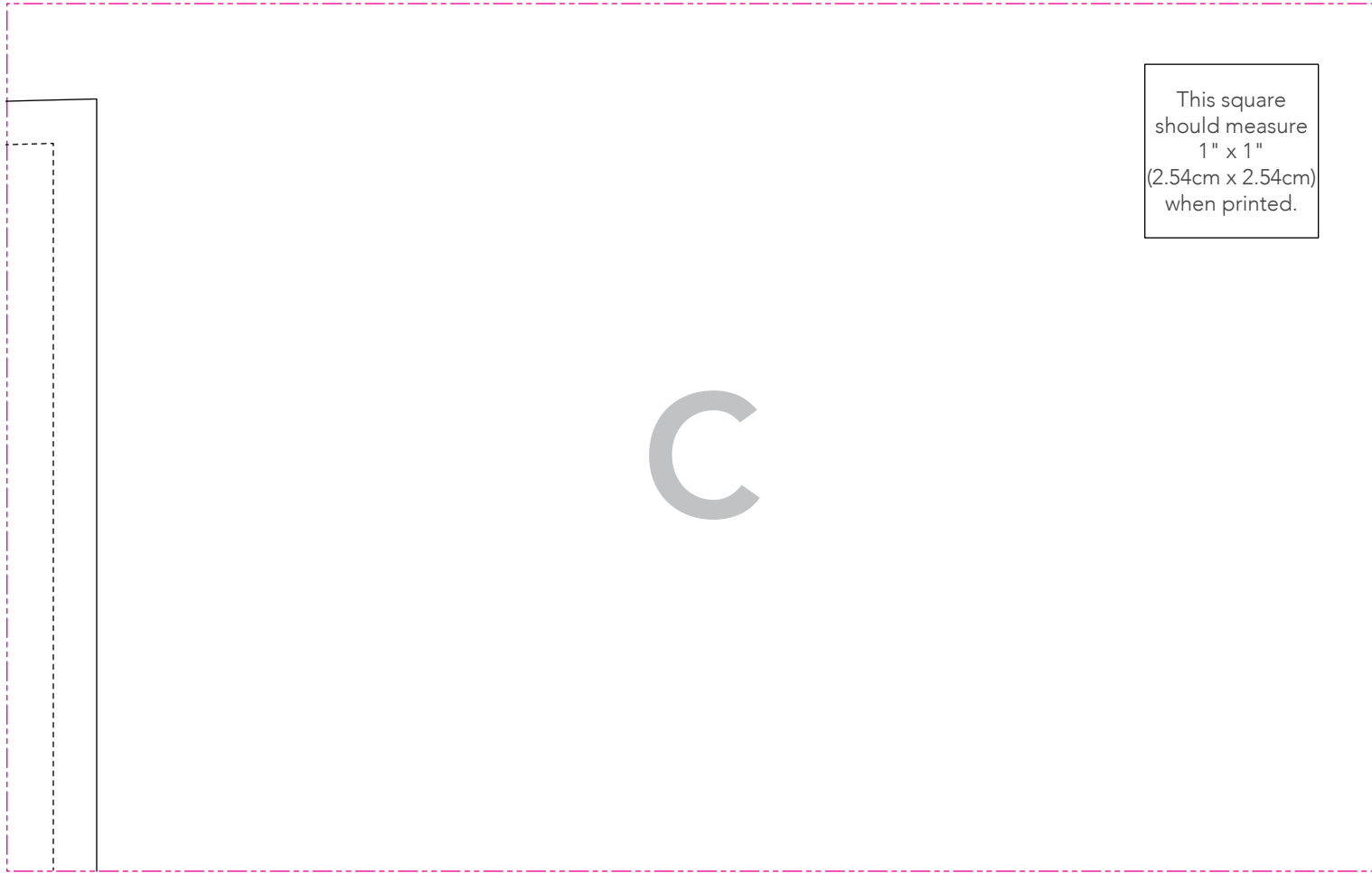


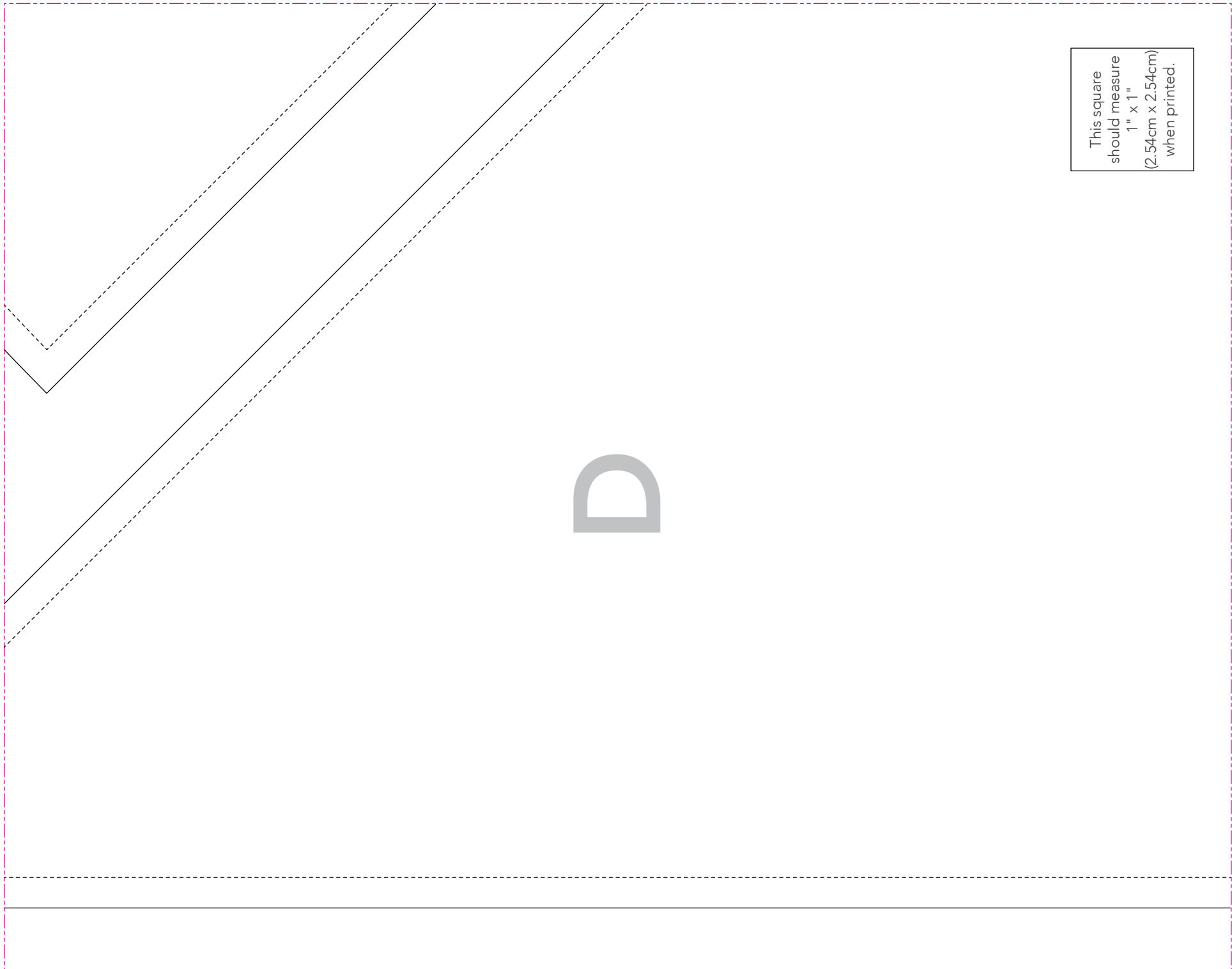


Template Construction Key









This square
should measure
1" x 1"
(2.54cm x 2.54cm)
when printed.

Curious by Nature
Template 3

Align with lengthwise grain for Fabric M.

Align with lengthwise grain for Fabric K.



This square
should measure
1" x 1"
(2.54cm x 2.54cm)
when printed.

Curious by Nature
Template 4



Align with lengthwise grain for Fabric P.

Align with lengthwise grain for Fabric N.

Align with lengthwise grain for Fabric D.

Align with lengthwise grain for Fabric O.

This square
should measure
1" x 1"
(2.54cm x 2.54cm)
when printed.

This square
should measure
1" x 1"
(2.54cm x 2.54cm)
when printed.

Curious by Nature
Template 1



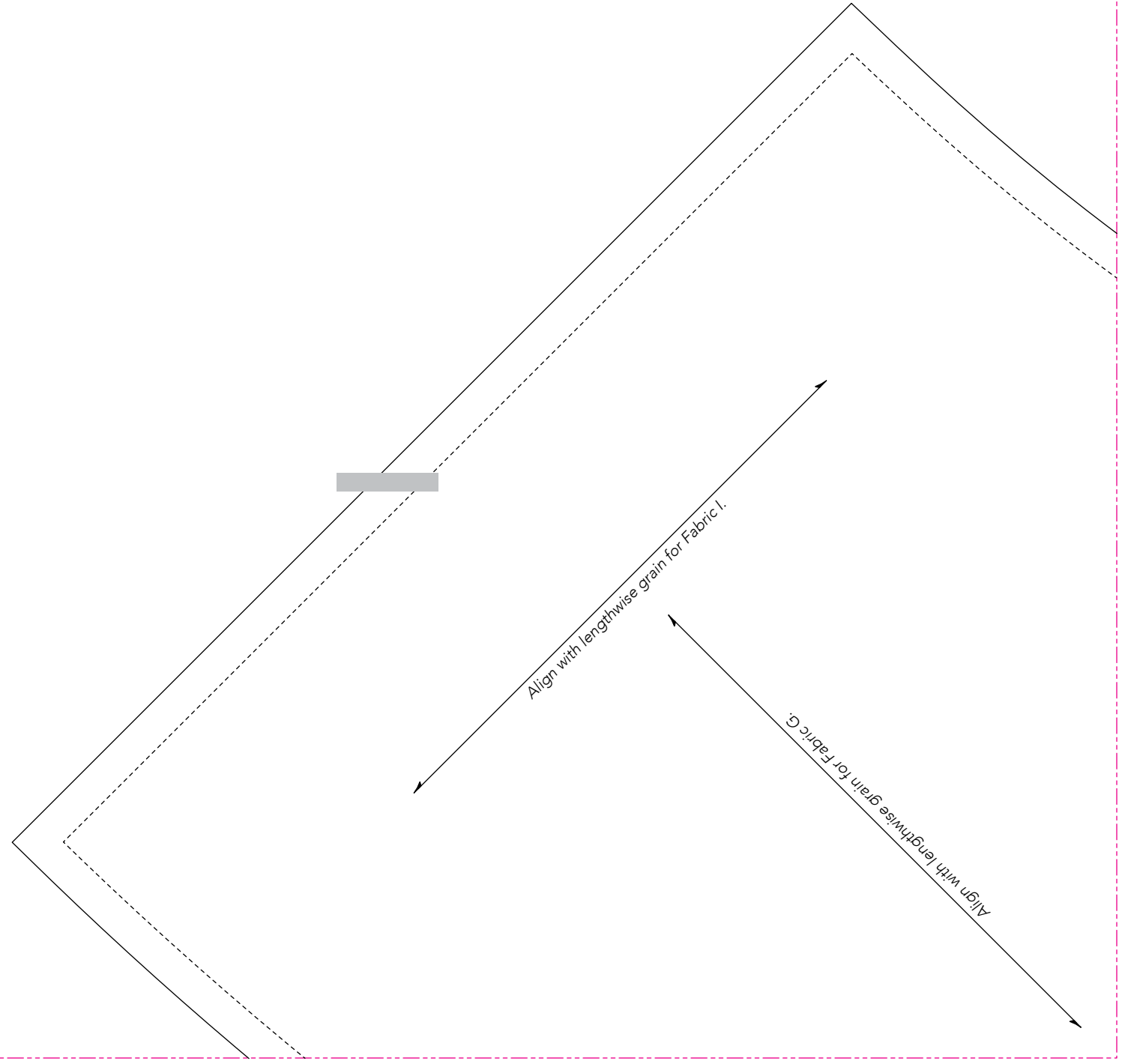
Align with lengthwise grain for fabrics A and B.
Align with crosswise grain for fabrics C and D.



This square
should measure
1" x 1"
(2.54cm x 2.54cm)
when printed.



This square
should measure
1" x 1"
(2.54cm x 2.54cm)
when printed.



*** Measure templates before cutting to confirm printing at 100%***

This square
should measure
1" x 1"
(2.54cm x 2.54cm)
when printed.



This square
should measure
1" x 1"
(2.54cm x 2.54cm)
when printed.

Align with lengthwise grain for Fabric F.

Align with lengthwise grain for Fabric H.

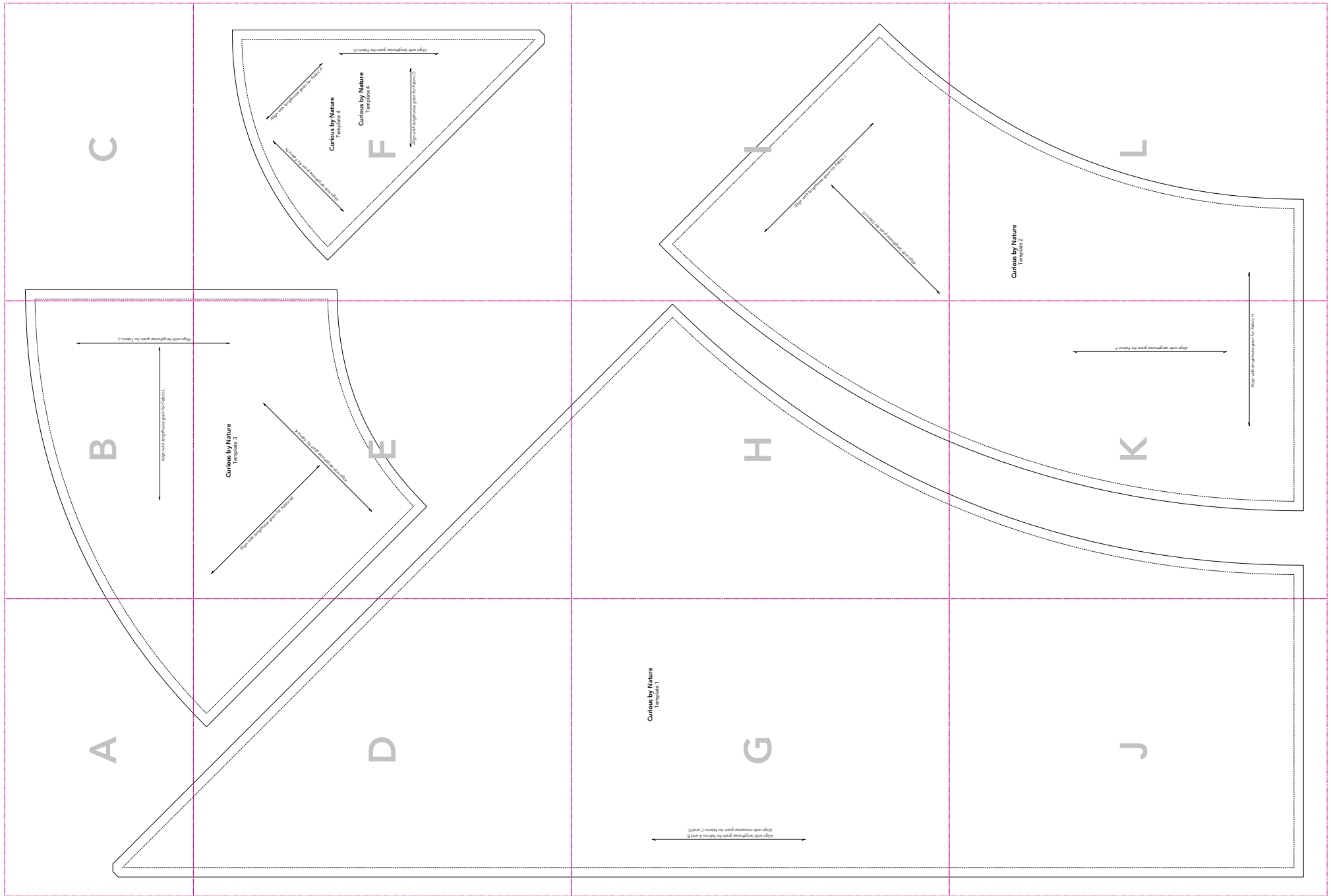


This square
should measure
1" x 1"
(2.54cm x 2.54cm)
when printed.

Curious by Nature
Template 2



*** Measure templates before cutting to confirm printing at 100%***



*** Measure templates before cutting to confirm printing at 100%***