

KAFFE
FASSETT
COLLECTIVE
for

Free Spirit

Deco Dance Quilt

Featuring February 2024 by
Kaffe Fassett Collective

Collection: February 2024 by
Kaffe Fassett Collective

Technique: Pieced

Skill Level: Advanced Beginner

**Finished
Quilt Size:** 72" x 84" (1.83m x 2.13m)

All possible care has been taken to ensure the accuracy of this pattern. We are not responsible for printing errors or the manner in which individual work varies. Please read the instructions carefully before starting this project. If kitting, it is recommended a sample is made to confirm accuracy.



Deco Dance Quilt

Project designed by Kaffe Fasset | Tech edited by Alison M. Schmidt

Fabric Requirements

DESIGN	COLOR	ITEM ID	YARDAGE
(A) Deco	Contrast	PWGP199.CONTRAST	¾ yard (0.69m)
(B) Deco	Cool	PWGP199.COOL	½ yard (0.46m)
(C) Paisley Flower	Contrast	PWGP200.CONTRAST	4 yards (3.66m)
(D) Petals	Black	PWGP201.BLACK	¼ yard (0.23m)
(E) Petals	Sky	PWGP201.SKY	¼ yard (0.23m)
(F) Step Flower	Contrast	PWGP202.CONTRAST	2 yards (1.83m)
(G) Square Dance	Neutral	PWGP203.NEUTRAL	¾ yard (0.69m)
(H) Coral	Duckegg	PWPJ004.DUCKEGG	⅜ yard (0.34m)
(I) Coral	Purple	PWPJ004.PURPLE*	¾ yard (0.69m)
(J) Curly Baskets	Contrast	PWPJ066.CONTRAST	⅜ yard (0.34m)

* includes binding

Backing (Purchased Separately)

44" (1.12m) wide

Deco	Hot	PWGP199.HOT	5¼ yards (4.80m)
------	-----	-------------	------------------

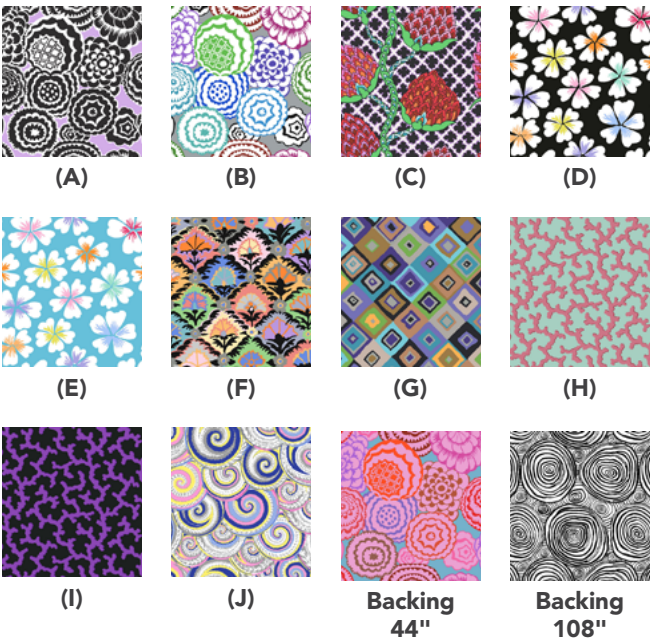
OR

108" (2.74m) wide

Onion Rings	Black	QBBM001.BLACK	2⅓ yards (2.13m)
-------------	-------	---------------	------------------

Additional Recommendations

- 100% cotton thread in colors to match
- 80" x 92" (2.03m x 2.34m) batting



Cutting

WOF = Width of Fabric
LOF = Length of Fabric

Fabric A, cut:

(4) 12½" squares

Fabric B, cut:

(1) 12½" x WOF; subcut
(1) 12½" x 24½" piece

Fabric C, fussy cut:

(4) 12½" x WOF strips for pieced top/bottom borders, featuring the same series of blooms
(1) 60½" x WOF; subcut
(2) 12½" x 60½" side borders, each with a green vine towards the right-hand side of the strip.

Tip: Start cutting the side border strips from the selvage edge without text on it, and work towards the opposite edge of the fabric.

Fabric D, cut:

(4) 6½" squares

Fabric E, cut:

(4) 4½" squares

Fabric F, cut:

(1) 44½" x LOF; subcut
(2) 8½" x 44½" side borders
(2) 8½" x WOF; subcut
(2) 8½" x 32½" top/bottom borders

Fabric G, cut:

(4*) 6½" x WOF; subcut
(2) 6½" x 32½" side borders
(2) 6½" x 20½" top/bottom borders*You may be able to cut both top/bottom borders from 1 WOF strip but enough yardage is allowed to cut separately.

Fabric H, cut:

(2) 4½" x WOF; subcut
(2) 4½" x 24½" side borders
(2) 4½" x 12½" top/bottom borders

Fabric I, cut:

(9) 2½" x WOF for binding

Fabric J, cut:

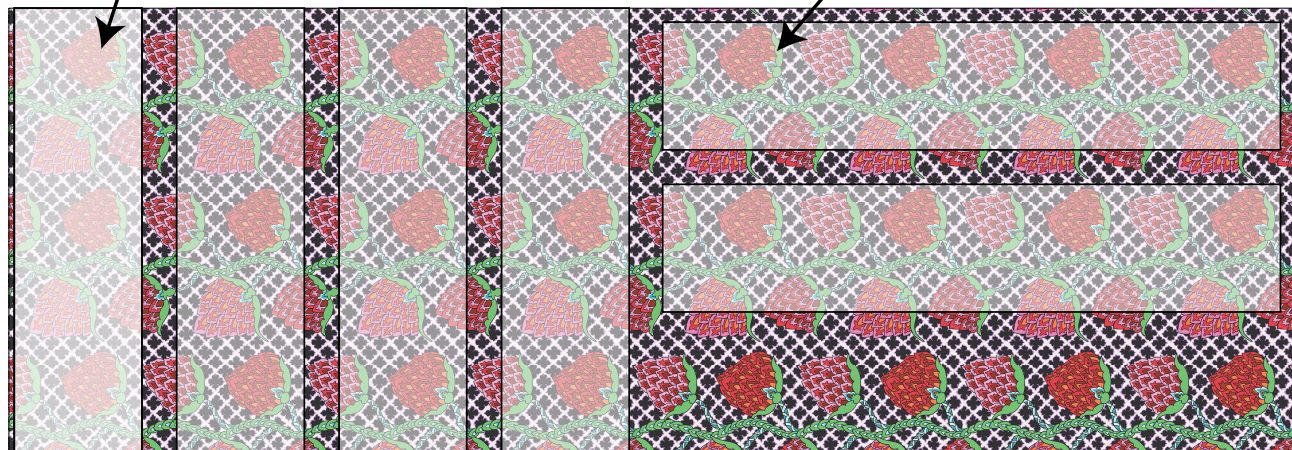
(4) 8½" squares

Fabric C fussy cutting diagram

12 1/2" x WOF: Fussy cut 4 for top/bottom borders (2 will be trimmed)

12 1/2" x 60 1/2" LOF: Fussy cut 2 for side borders

selvage edge *without* text



white selvage edge with text



Deco Dance Quilt

Quilt Top Assembly

Note: Use a $\frac{1}{4}$ " seam allowance throughout. Sew all pieces with right sides together and raw edges even using matching thread. Press after each seam.

1. Noting **Quilt Layout** diagram (page 5), sew **Fabric H** $4\frac{1}{2}$ " x $24\frac{1}{2}$ " borders to the long sides of the **Fabric B** $12\frac{1}{2}$ " x $24\frac{1}{2}$ " center panel.
2. Stitch **Fabric E** $4\frac{1}{2}$ " squares to short ends of both **Fabric H** $4\frac{1}{2}$ " x $12\frac{1}{2}$ " borders. Add to top and bottom of the quilt center.
3. Sew **Fabric G** $6\frac{1}{2}$ " x $32\frac{1}{2}$ " borders to long sides of the quilt.
4. Stitch **Fabric D** $6\frac{1}{2}$ " squares to short ends of both **Fabric G** $6\frac{1}{2}$ " x $20\frac{1}{2}$ " borders. Add to top and bottom of quilt.
5. Sew **Fabric F** $8\frac{1}{2}$ " x $44\frac{1}{2}$ " borders to long sides of quilt.
6. Stitch **Fabric J** $8\frac{1}{2}$ " squares to short ends of both **Fabric F** $8\frac{1}{2}$ " x $32\frac{1}{2}$ " borders. Add to top and bottom of quilt.
7. Sew fussy-cut **Fabric C** $12\frac{1}{2}$ " x $60\frac{1}{2}$ " side borders to long sides of quilt, referring to the diagram and finished quilt photo for orientation.

8. **Alternate intermediate-level fussy-cut and pattern-matched border method** (If you choose not to use this technique, sew the border strips together and proceed to the next step):

Trim 2 of the fussy-cut **Fabric C** $12\frac{1}{2}$ " x WOF top/bottom border strips down so that each short end of the trimmed strip has only the background showing, not any of the large paisley flower blooms. Ideally, trim away just the white selvage on the side with the text, and on the opposite side of the yardage, trim off the outermost partial set of blossoms on a vine.

On the remaining 2 WOF strips, trim away the white selvage, and join the trimmed end to the end of the previously trimmed strip. If necessary, fold the end to be joined under $\frac{1}{4}$ " to find a perfect match point in the background, glue baste the pieces together, then sew the seam. Repeat with the other 2 strips to make the second top/bottom border.

9. Trim both border strips to $48\frac{1}{2}$ ", and add **Fabric A** $12\frac{1}{2}$ " squares to short ends of both. Add to top and bottom of quilt center to complete the quilt top.

Finishing

10. Sew together the $2\frac{1}{2}$ " **Fabric I** binding strips end-to-end using diagonal seams. Press seams open. Press the binding strip in half wrong sides together.
11. Layer backing (wrong side up), batting, and quilt top (right side up). Baste the layers together and quilt as desired. Trim excess batting and backing even with the top after quilting is completed.
12. Leaving an 8" tail of binding, sew the binding to the top of the quilt through all layers matching all raw edges. Miter corners. Stop approximately 12" from where you started. Lay both loose ends of binding flat along quilt edge. Where the loose ends meet, fold them back on themselves and press to form a crease. Using this crease as your stitching line, sew the two open ends of the binding right sides together. Trim seam to $\frac{1}{4}$ " and press open. Finish sewing binding to quilt.
13. Turn the binding to the back of quilt and hand-stitch in place.

Quilt Layout

