

Free Spirit 



Featuring Love Always AM Cotton Lawn by Anna Maria

Eclipse Quilt

Finished Size: 59" x 71" (1.50m x 1.80m)

Project designed by Susan Ziegler - *Quiltin' Tia Quiltworks*

Purchase pattern at quiltintia.com

Technique: Pieced | Skill Level: Advanced Beginner

Fabric Requirements

DESIGN	COLOR	ITEM ID	YARDAGE
(A) Echinacea	Ruby	CLAH007.RUBY	1 yard (0.91m)
(B) Source Code	Midnight	CLAH008.MIDNIGHT	1 yard (0.91m)
(C) Tapestry	Summer	CLAH001.SUMMER	1 yard (0.91m)
(D) Shot Cotton	Aubergine	SCGP117.AUBERGINE*	2 yards (1.83m)
(E) Shot Cotton	Opal	SCGP114.OPAL	1 yard (0.91m)

* includes binding

Backing (Purchased Separately)

44" (1.12m) wide

Source Code

OR

108" (2.74m) wide

Midnight

CLAH008.MIDNIGHT

4 yards (3.66m)

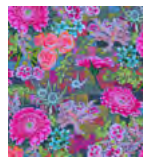
2 yards (1.83m)



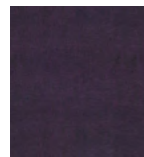
(A)



(B)



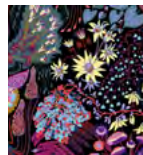
(C)



(D)



(E)



Backing
44"

If kitting, refer to the final pattern for yardage amounts, it is recommended that a sample is made to confirm accuracy.