

Free Spirit

THE ORIGINAL
MORRIS & Co

FOUNDED BY WILLIAM MORRIS IN 1861



Featuring Buttermere by The Original Morris & Co.

Entangled Quilt

10 Month Round About Quilt

Finished Size: 76" x 76" (1.93m x 1.93m)

Project designed by Linda McGibbon-Lakeview Quilting

Purchase pattern at lakeviewquilting2.com

- available January 2024

Technique: Pieced | Skill Level: Advanced Beginner

freespiritfabrics.com

Fabric Requirements

DESIGN	COLOR	ITEM ID	YARDAGE
(A) Strawberry Thief	Mint	PWWM001.MINT	1½ yards (1.37m)
(B) Marigold	Navy	PWWM006.NAVYX	⅝ yard (0.57m)
(C) Marigold	Sunshine	PWWM006.SUNSHINE	⅞ yard (0.80m)
(D) Seaweed Dot	Navy	PWWM008.NAVYX*	1¼ yards (1.14m)
(E) Bellflowers	Navy	PWWM021.NAVY	⅝ yard (0.57m)
(F) Willow	Chona	PWWM025.CHONA	¾ yard (0.69m)
(G) Golden Lily	Sunshine	PWWM028.SUNSHINE	¾ yard (0.69m)
(H) Golden Lily	Navy	PWWM028.NAVY	1⅝ yards (1.49m)
(I) Willow Boughs	Mint	PWWM030.MINT	¼ yard (0.23m)
(J) Michalemas Daisy	Mint	PWWM035.MINT	⅝ yard (0.57m)
(K) Michalemas Daisy	Sunshine	PWWM035.SUNSHINE	⅜ yard (0.34m)
(L) Mallow	Navy	PWWM048.NAVY	1 yard (0.91m)
(M) Mallow	Multi	PWWM048.MULTI	¾ yard (0.69m)
(N) Small Bellflowers	Yellow	PWWM089.YELLOW	⅜ yard (0.34m)

* includes binding

Backing (Purchased Separately)

44" (1.12m) wide

Woodland Weeds

Multi

PWWM091.MULTI

5 yards (4.57m)

OR

108" (2.74m) wide

Strawberry Thief

Linen

QBWM001.LINEN

2½ yards (2.29m)

Strawberry Thief

Navy

QBWM001.NAVY

2½ yards (2.29m)

Pure Willow Boughs

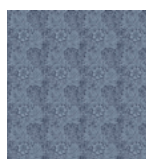
Linen

QBWM008.LINEN

2½ yards (2.29m)



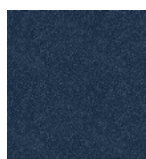
(A)



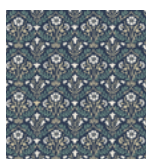
(B)



(C)



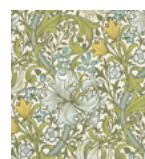
(D)



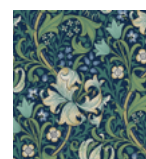
(E)



(F)



(G)



(H)



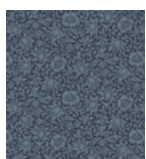
(I)



(J)



(K)



(L)



(M)



(N)



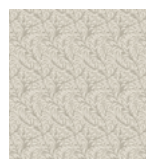
Backing
44"



Backing
108"



Backing
108"



Backing
108"

If kitting, refer to the final pattern for yardage amounts, it is recommended that a sample is made to confirm accuracy.