



Featuring Enchanted Forest by Cori Dantini

Fa La La Quilt

Finished Size: 54" x 72" (1.37m x 1.83m)

Project designed by Lisa Alley - Bear Hug Quiltworks

Purchase pattern at bearhugquiltworks.com

Technique: Pieced and Paper Pieced | Skill Level: Intermediate

Fabric Requirements

DESIGN	COLOR	ITEM ID	YARDAGE
(A) Busy Day	Aqua	PWCD070.XAQUA	1¼ yards (1.14m)
(B) In the Thick of It	Evergreen	PWCD071.XEVERGREEN	½ yard (0.46m)
(C) Garland	Garnet	PWCD072.XGARNET*	1 yard (0.91m)
(D) Enchanted Forest	Panel	PWCD073.XPANEL	1 Panel
(E) Wild	Green	PWCD075.XGREEN	½ yard (0.46m)
(F) Toadstool	Pink	PWCD076.XPINK	½ yard (0.46m)
(G) Forest Floor	Teal	PWCD077.XTEAL	½ yard (0.46m)
(H) Into the Forest	Dark Teal	PWCD078.XDKTEAL	⅝ yard (0.57m)
(I) Designer Essential Solid	Whimsy	CSFSESS.WHIMSY	3 yards (2.74m)
(J) Designer Essential Solid	Carnelian	CSFSESS.CARNELIAN	¾ yard (0.69m)
(K) Designer Essential Solid	Parsley	CSFSESS.PARSLEY	¾ yard (0.69m)

* includes binding

Backing (Purchased Separately)

44" (1.12m) wide

Day in the Woods

OR

108" (2.74m) wide

White

PWCD079.XWHITE

4¼ yards (3.89m)

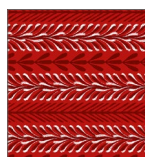
2 yards (1.83m)



(A)



(B)



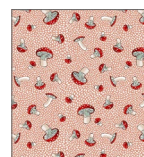
(C)



(D)



(E)



(F)



(G)



(H)



(I)



(J)



(K)



Backing
44"

*If kitting, refer to the final pattern for yardage amounts,
it is recommended that a sample is made to confirm accuracy.*