

Free Spirit 



Featuring Root by e bond

Faster Fourteen Quilt

Finished Size: 54" x 68" (1.37m x 1.73m)

Project designed by Sam Hunter - Hunter's Design Studio

Purchase pattern at huntersdesignstudio.com

Technique: Pieced | Skill Level: Advanced Beginner

freespiritfabrics.com



Faster Fourteen Quilt

Fabric Requirements

DESIGN	COLOR	ITEM ID	YARDAGE
(A) Integer	Skylight	PWEB017.SKYLIGHT	¼ yard (0.23m)
(B) Zerosum	Cosmos	PWEB018.COSMOS	¼ yard (0.23m)
(C) Binary	Universe	PWEB019.UNIVERSE	¼ yard (0.23m)
(D) Unrooted	Ember	PWEB020.EMBER	¼ yard (0.23m)
(E) Node	Froth	PWEB021.FROTH	¼ yard (0.23m)
(F) Cipher	Pinkish	PWEB022.PINKISH	¼ yard (0.23m)
(G) Leaves	Particle	PWEB023.PARTICLE	¼ yard (0.23m)
(H) Trees	Neonbright	PWEB024.NEONBRIGHT*	1½ yards (1.37m)
(I) Shoots	Verdant	PWEB025.VERDANT	¼ yard (0.23m)
(J) Root	Lichen	PWEB026.LICHEN	¼ yard (0.23m)
(K) Bits	Rainbow	PWEB027.RAINBOW	¼ yard (0.23m)
(L) Tuber	Sunshine	PWEB028.SUNSHINE	¼ yard (0.23m)
(M) Stems	Komorebi	PWEB030.KOMOREBI	¼ yard (0.23m)
(N) Sequence	Grayscale	PWEB031.GRAYSCALE	¼ yard (0.23m)
(O) Bytes	Dayspring	PWEB032.DAYSPRING	¼ yard (0.23m)

* includes binding

Backing (Purchased Separately)

44" (1.12m) wide

Node

Froth

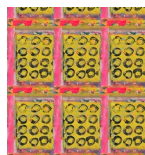
PWEB021.FROTH

3¼ yards (2.97m)

OR

108" (2.74m) wide

1¾ yards (1.60m)



(A)



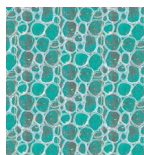
(B)



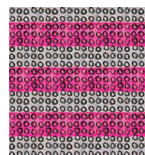
(C)



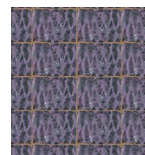
(D)



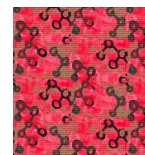
(E)



(F)



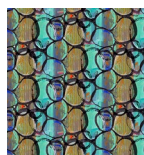
(G)



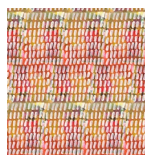
(H)



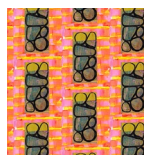
(I)



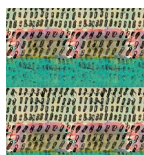
(J)



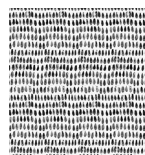
(K)



(L)



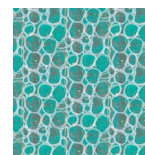
(M)



(N)



(O)



Backing
44"

*If kitting, refer to the final pattern for yardage amounts,
it is recommended that a sample is made to confirm accuracy.*