



Featuring Wandle by The Original Morris & Co.

Fleur Quilt

Finished Size: 80" (2.03m) Square

Project designed by Robin Long - Robin Ruth Design

Purchase pattern at robinruthdesign.com

Technique: Strip Pieced Mariner's Compass Blocks and Appliqué using the Fat Robin 16-Point Book and Ruler Combo

Skill Level: Intermediate



Fleur Quilt

Fabric Requirements

DESIGN	COLOR	ITEM ID	YARDAGE
(A) Strawberry Thief	Light Blue	PWWM001.LIGHTBLUE	¼ yard (0.23m)
(B) Strawberry Thief	Vellum	PWWM001.VELLUM	¼ yard (0.23m)
(C) Brer Rabbit	Blue	PWWM026.BLUE	⅓ yard (0.30m)
(D) Brer Rabbit	Coral	PWWM026.CORAL	1¼ yards (1.14m)
(E) Willow Boughs	Blue	PWWM030.BLUE	⅝ yard (0.57m)
(F) Brophy Trellis	Blue	PWWM046.BLUE	⅝ yard (0.57m)
(G) Mallow	Coral	PWWM048.CORAL	⅜ yard (0.34m)
(H) Chrysanthemum Tonal	Blue	PWWM080.BLUE	¼ yard (0.23m)
(I) Chrysanthemum Tonal	Coral	PWWM080.CORAL	¾ yard (0.69m)
(J) Standen Lily	Vellum	PWWM081.VELLUM	½ yard (0.46m)
(K) Severne	Coral	PWWM082.CORAL	¼ yard (0.23m)
(L) Severne	Blue	PWWM082.BLUE	¼ yard (0.23m)
(M) Large Acanthus	Blue	PWWM083.BLUE	1½ yards (1.37m)
(N) Seaweed Dot	Red	PWWM008.REDXX*	⅞ yard (0.80m)
(O) Seaweed Dot	Navy	PWWM008.NAVYX	⅔ yard (0.61m)
(P) Poppy	Cream	PWWM029.CREAM	3⅜ yards (3.09m)

* includes binding

Backing (Purchased Separately)

44" (1.12m) wide

Bachelors Button	Blue	PWWM003.BLUE	5 yards (4.57m)
------------------	------	--------------	-----------------

OR

108" (2.74m) wide

Strawberry Thief	Linen	QBWM001.LINEN	2½ yards (2.29m)
------------------	-------	---------------	------------------

Fabric Swatches on next page...

*If kitting, refer to the final pattern for yardage amounts,
it is recommended that a sample is made to confirm accuracy.*

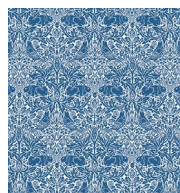
Fabric Swatches



(A)



(B)



(C)



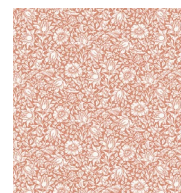
(D)



(E)



(F)



(G)



(H)



(I)



(J)



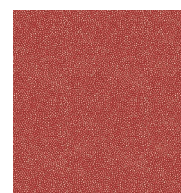
(K)



(L)



(M)



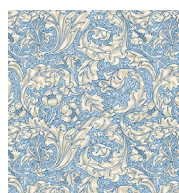
(N)



(O)



(P)



Backing
44"



Backing
108"