



Featuring A Spring in Paris by Nathalie Lete for Conservatory Craft

Flower Love Quilt

Finished Size: 64" x 64" (1.63m x 1.63m)

Project designed by Mariana Diaz - Sew Mariana

Purchase pattern at sewmarianashop.com

Technique: Pieced | Skill Level: Advanced Beginner

Fabric Requirements

DESIGN	COLOR	ITEM ID	YARDAGE
(A) Dream	Grape	PWNL039.GRAPE	FQ (45.72cm x 53.34cm)
(B) Hatbox	Jade	PWNL040.JADE	FQ (45.72cm x 53.34cm)
(C) Hatbox	Pink	PWNL040.PINK	FQ (45.72cm x 53.34cm)
(D) Sightseeing	Multi	PWNL042.MULTI*	5/8 yard (0.57m)
(E) Sightseeing Tonal	Azul	PWNL043.AZUL	FQ (45.72cm x 53.34cm)
(F) Sightseeing Tonal	Orange	PWNL043.ORANGE	FQ (45.72cm x 53.34cm)
(G) Tiger Eye	Rust	PWNL044.RUST	FQ (45.72cm x 53.34cm)
(H) Tile Small	Sea	PWNL046.SEA	FQ (45.72cm x 53.34cm)
(I) Wallpaper	Aqua	PWNL047.AQUA	FQ (45.72cm x 53.34cm)
(J) Wallpaper	Tangerine	PWNL047.TANGERINE	FQ (45.72cm x 53.34cm)
(K) Designer Essential Solid	Glacier	CSFSESS.GLACI	3 1/2 yards (3.20m)
(L) Designer Essential Solid	Mojito	CSFSESS.MOJIT	F8 (22.86cm x 53.34cm)
(M) Designer Essential Solid	Persimmon	CSFSESS.PERSI	F8 (22.86cm x 53.34cm)
(N) Designer Essential Solid	Aegean	CSFSESS.AEGEA	F8 (22.86cm x 53.34cm)
(O) Designer Essential Solid	Cosmo	CSFSESS.COSMO	F8 (22.86cm x 53.34cm)
(P) Designer Essential Solid	Dazzle	CSFSESS.DAZZLE	F8 (22.86cm x 53.34cm)
(Q) Designer Essential Solid	Stargazer	CSFSESS.STARGAZER	F8 (22.86cm x 53.34cm)
(R) Designer Essential Solid	Rio Red	CSFSESS.RIORE	F8 (22.86cm x 53.34cm)
(S) Designer Essential Solid	Amethyst	CSFSESS.AMETHYST	F8 (22.86cm x 53.34cm)
(T) Designer Essential Solid	Shimmer	CSFSESS.SHIMMER	F8 (22.86cm x 53.34cm)

* includes binding

Backing (Purchased Separately)

44" (1.12m) wide

Sightseeing Multi PWNL042.MULTI 4 yards (3.66m)

OR

108" (2.74m) wide

Delphinium Jewel QBAH004.JEWEL 2 yards (1.83m)

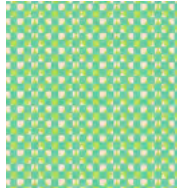
Fabric Swatches on next page...

If kitting, refer to the final pattern for yardage amounts, it is recommended that a sample is made to confirm accuracy.

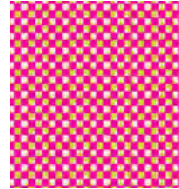
Fabric Swatches



(A)



(B)



(C)



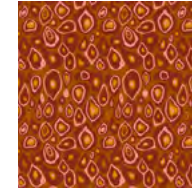
(D)



(E)



(F)



(G)



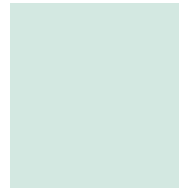
(H)



(I)



(J)



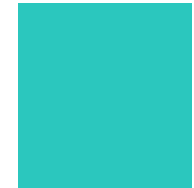
(K)



(L)



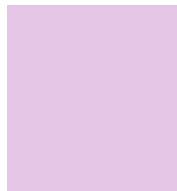
(M)



(N)



(O)



(P)



(Q)



(R)



(S)



(T)



**Backing
44"**



**Backing
108"**