

*Free Spirit* 



Featuring Brave by Anna Maria Horner

# Flower Power Quilt

Finished Size: 87" (2.21m) Square

*Project designed by Robin Long - Robin Ruth Design*

*Purchase pattern at [robinruthdesign.com](http://robinruthdesign.com)*

**Technique:** Strip Pieced Mariner's Compass Blocks and Appliqué using the Fat Robin 16-Point Book and Ruler Combo

**Skill Level:** Intermediate

[freespiritfabrics.com](http://freespiritfabrics.com)





# Flower Power Quilt

## Fabric Requirements

DESIGN	COLOR	ITEM ID	YARDAGE
(A) Surprise	Surreal	PWAH193.SURREAL	$\frac{3}{4}$ yard (0.69m)
(B) Surprise	Coral	PWAH193.CORAL	$\frac{3}{4}$ yard (0.69m)
(C) Labyrinth	Ruby	PWAH194.RUBY	2 $\frac{1}{4}$ yards (2.06m)
(D) Sunseekers	Day	PWAH195.DAY	1 $\frac{1}{8}$ yards (1.03m)
(E) Sunseekers	Night	PWAH195.NIGHT	2 $\frac{1}{2}$ yards (2.29m)
(F) Bell Ringer	Tangerine	PWAH196.TANGERINE	$\frac{1}{2}$ yard (0.46m)
(G) Giggle	Grass	PWAH197.GRASS	1 $\frac{3}{8}$ yards (1.26m)
(H) Giggle	Indigo	PWAH197.INDIGO	$\frac{7}{8}$ yard (0.80m)
(I) Giggle	Olive	PWAH197.OLIVE*	1 yard (0.91m)
(J) Petaloutha	Lilac	PWAH199.LILAC	1 yard (0.91m)
(K) Scales	Mango	PWAH201.MANGO	$\frac{7}{8}$ yard (0.80m)
(L) Scales	Pink	PWAH201.PINK	$\frac{1}{8}$ yard (0.11m)

\* includes binding

## Backing (Purchased Separately)

108" (2.74m) wide

Surprise	Navy	QBAH008.NAVY	2 $\frac{3}{4}$ yards (2.51m)
----------	------	--------------	-------------------------------



(A)



(B)



(C)



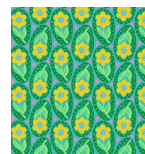
(D)



(E)



(F)



(G)



(H)



(I)



(J)



(K)



(L)



Backing  
108"

*If kitting, refer to the final pattern for yardage amounts, it is recommended that a sample is made to confirm accuracy.*