

*Free Spirit* 



Featuring Scalloped Hills and Seeds by Cori Dantini, Classics by Kaffe Fassett Collective

## Flower Power Quilt

Finished Size: 60" x 66" (1.52m x 1.68m)

Project designed by Swirly Girls Design

Purchase pattern at [swirlygirlsdesign.com](http://swirlygirlsdesign.com)

Technique: Pieced and Applique, with templates or the Creative Grids Circle Savvy Ruler | Skill Level: Intermediate

## Fabric Requirements (Fabric Swatches on next page...)

DESIGN	COLOR	ITEM ID	YARDAGE
(A) <b>Aboriginal Dot</b>	WISTERIA	PWGP071.WISTE	FQ (45.72cm x 53.34cm)
(B) <b>Aboriginal Dot</b>	TURQUOISE	PWGP071.TURQU	FQ (45.72cm x 53.34cm)
(C) <b>Aboriginal Dot</b>	GOLD	GP71.GOLD	FQ (45.72cm x 53.34cm)
(D) <b>Aboriginal Dot</b>	CANTALOUPE	GP71.CANTA	FQ (45.72cm x 53.34cm)
(E) <b>Aboriginal Dot</b>	SHOCK	PWGP071.SHOCK	FQ (45.72cm x 53.34cm)
(F) <b>Aboriginal Dot</b>	OCEAN	GP71.OCEAN	FQ (45.72cm x 53.34cm)
(G) <b>Seeds</b>	GRAPE	PWCD012.XGRAPE	FQ (45.72cm x 53.34cm)
(H) <b>Seeds</b>	COBALT	PWCD012.XCOBALT	FQ (45.72cm x 53.34cm)
(I) <b>Seeds</b>	LAVENDER	PWCD012.XLAVENDER	FQ (45.72cm x 53.34cm)
(J) <b>Seeds</b>	AZURE	PWCD012.XAZURE	FQ (45.72cm x 53.34cm)
(K) <b>Seeds</b>	ORANGE	PWCD012.XORANGE	FQ (45.72cm x 53.34cm)
(L) <b>Seeds</b>	WATERMELON	PWCD012.XWATERMELON	FQ (45.72cm x 53.34cm)
(M) <b>Seeds</b>	CHARCOAL	PWCD012.XCHARCOAL	FQ (45.72cm x 53.34cm)
(N) <b>Seeds</b>	BUTTER	PWCD012.XBUTTER	FQ (45.72cm x 53.34cm)
(O) <b>Seeds</b>	COTTONCANDY	PWCD012.XCOTTONCANDY	FQ (45.72cm x 53.34cm)
(P) <b>Seeds</b>	FOG	PWCD012.XFOG	FQ (45.72cm x 53.34cm)
(Q) <b>Seeds</b>	CARNATION	PWCD012.XCARNATION	FQ (45.72cm x 53.34cm)
(R) <b>Seeds</b>	CRAFT	PWCD012.XCRAFT	FQ (45.72cm x 53.34cm)
(S) <b>Seeds</b>	ICE	PWCD012.XICE	FQ (45.72cm x 53.34cm)
(T) <b>Spot</b>	PERIWINKLE	GP70.PERIW	FQ (45.72cm x 53.34cm)
(U) <b>Spot</b>	ORANGE	PWGP070.ORANG	FQ (45.72cm x 53.34cm)
(V) <b>Spot</b>	SHERBET	PWGP070.SHERB	FQ (45.72cm x 53.34cm)
(W) <b>Spot</b>	VIOLET	PWGP070.VIOLET	FQ (45.72cm x 53.34cm)
(X) <b>Spot</b>	CHINA	GP70.CHINA	FQ (45.72cm x 53.34cm)
(Y) <b>Spot</b>	MERLOT	PWGP070.MERLOT	FQ (45.72cm x 53.34cm)
(Z) <b>Spot</b>	SPRING	PWGP070.SPRING	FQ (45.72cm x 53.34cm)
(AA) <b>Spot</b>	TURQUOISE	GP70.TURQ	FQ (45.72cm x 53.34cm)
(AB) <b>Spot</b>	SAPPHIRE	GP70.SAPPH	FQ (45.72cm x 53.34cm)
(AC) <b>Spot</b>	PACIFIC	PWGP070.PACIFIC	FQ (45.72cm x 53.34cm)
(AD) <b>Spot</b>	MAUVE	PWGP070.MAUVE	FQ (45.72cm x 53.34cm)
(AE) <b>Spot</b>	MAGNOLIA	GP70.MAGNO	1¾ yards (1.60m)
(AF) <b>Seeds</b>	GRASS	PWCD012.XGRASS*	1 yard (0.91m)

\* includes binding

## Backing (Purchased Separately)

### 44" (1.12m) wide

Enchanted GREEN PWGP172.GREEN 4 yards (3.66m)

OR

### 108" (2.74m) wide

Millefiore PASTEL QBGP006.PASTEL 2 yards (1.83m)

*If kitting, refer to the final pattern for yardage amounts, it is recommended that a sample is made to confirm accuracy.*



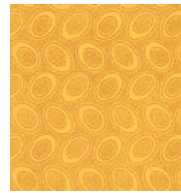
## Fabric Swatches



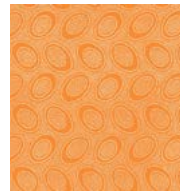
(A)



(B)



(C)



(D)



(E)



(F)



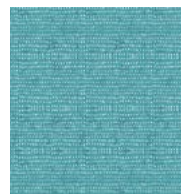
(G)



(H)



(I)



(J)



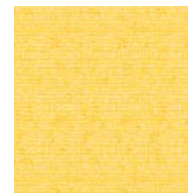
(K)



(L)



(M)



(N)



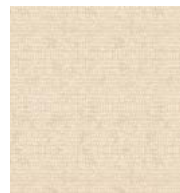
(O)



(P)



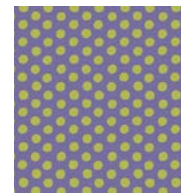
(Q)



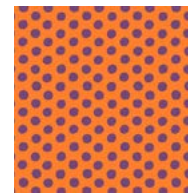
(R)



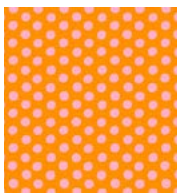
(S)



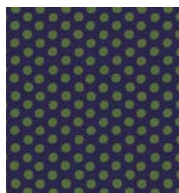
(T)



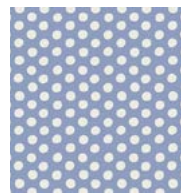
(U)



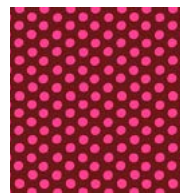
(V)



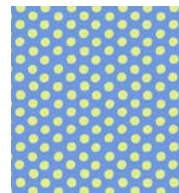
(W)



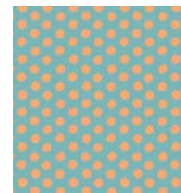
(X)



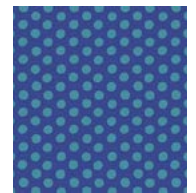
(Y)



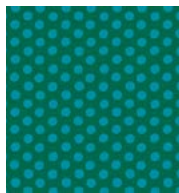
(Z)



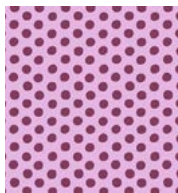
(AA)



(AB)



(AC)



(AD)



(AE)



(AF)



Backing  
44"



Backing  
108"