

Featuring Sea Sisters by Shell Rummel

# Fluidity Quilt

Finished Size: 72½" (1.84m) Square

*Project designed by Natalie Crabtree*

*Purchase pattern at [shellrummel.com](http://shellrummel.com)*

Technique: Pieced | Skill Level: Advanced Beginner

## Fabric Requirements

DESIGN	COLOR	ITEM ID	YARDAGE
(A) Low Tide	DUSKY BLUE	PWSR069.DUSKYBLUE	½ yard (0.46m)
(B) Sea Wall	AZURE	PWSR070.AZURE	1 yard (0.91m)
(C) Ocean Fragments	MULTI	PWSR072.MULTI	⅞ yard (0.80m)
(D) Crest	SILVER BLUE	PWSR073.SILVERBLUE	¾ yard (0.69m)
(E) In the Shallows	AQUAMARINE	PWSR074.AQUAMARINE	¼ yard (0.23m)
(F) Coastal Wildflowers	DUSKY BLUE	PWSR075.DUSKYBLUE	¼ yard (0.23m)
(G) Dunes	MARINE	PWSR076.MARINE	¾ yard (0.69m)
(H) Small Dunes	WARM SAND	PWSR077.WARMSAND	¾ yard (0.69m)
(I) Swirl	INDIGO	PWSR079.INDIGO	¼ yard (0.23m)
(J) Urchins	STORM GREY	PWSR080.STORMGREY*	¾ yard (0.69m)
(K) Designer Essential Solids	WINTER WHITE	CSFSESS.WINTE	2⅞ yards (2.17m)

\* includes binding

## Backing (Purchased Separately)

**44" (1.12m) wide**

Sanibel

OCEAN

PWSR078.OCEAN

4½ yards (4.11m)

**OR**

**108" (2.74m) wide**

Watercolor Urchins

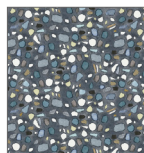
SALT

QBSR002.SALT

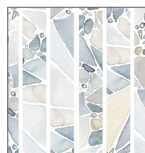
2⅞ yards (1.94m)



(A)



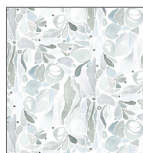
(B)



(C)



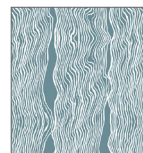
(D)



(E)



(F)



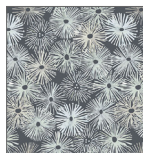
(G)



(H)



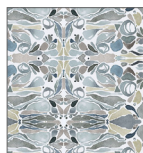
(I)



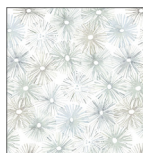
(J)



(K)



Backing  
44"



Backing  
108"

*If kitting, refer to the final pattern for yardage amounts,  
it is recommended that a sample is made to confirm accuracy.*