



Featuring Storyboard by Seth Apter

Fractions Quilt

Finished Size: 68" x 85" (1.73m x 2.16m)

Project designed by Swirly Girls Design

Purchase pattern at swirlygirlsdesign.com

Technique: Pieced | Skill Level: Advanced Beginner

Fabric Requirements

DESIGN	COLOR	ITEM ID	YARDAGE
(A) Journey	Cornfield	PWSE001.CORNFIELD	1¼ yards (1.14m)
(B) Matrix	Inkblot	PWSE004.INKBLOT	1¼ yards (1.14m)
(C) Possible	Mosaic	PWSE007.MOSAIC	1¼ yards (1.14m)
(D) Printed Matter	Paper	PWSE009.PAPER	1¼ yards (1.14m)
(E) Wish	Verdigris	PWSE012.VERDIGRIS	1¼ yards (1.14m)
(F) Worn Croc	Nightfall	PWTH020.NIGHTFALL*	2 yards (1.83m)

* includes binding

Backing (Purchased Separately)

44" (1.12m) wide

Storyteller

OR

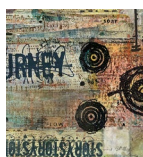
108" (2.74m) wide

Frost

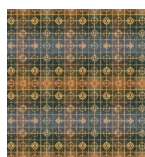
PWSE008.FROST

5½ yards (5.03m)

2½ yards (2.29m)



(A)



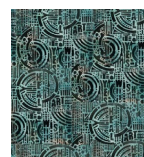
(B)



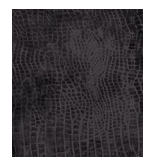
(C)



(D)



(E)



(F)



Backing
44"

*If kitting, refer to the final pattern for yardage amounts,
it is recommended that a sample is made to confirm accuracy.*