



Free Spirit 

Framed Fans Quilt

Featuring Water Garden by Sanderson

Collection: Water Garden by Sanderson

Technique: Pieced

Skill Level: Intermediate

**Finished
Sizes:**

Finished Size:

55¹/₄" x 73¹/₂" (1.40m x 1.86m)

Finished Block Size:

10" x 10" (25.40cm x 25.40cm)

All possible care has been taken to assure the accuracy of this pattern. We are not responsible for printing errors or the manner in which individual work varies. Please read the instructions carefully before starting this project. If kitting, it is recommended a sample is made to confirm accuracy.

Project designed by Lucy A. Fazely | Tech edited by Alison M. Schmidt

Fabric Requirements

DESIGN	COLOR	ITEM ID	YARDAGE
(A) Bonsai & Gingko	GREEN	PWSA043.GREEN	1/3 yard (0.30m)
(B) Laburnum Falls	BLACK	PWSA044.BLACK*	1 1/8 yards (1.03m)
(C) Chinese Lantern	BLUSH	PWSA045.BLUSH	1 yard (0.91m)
(D) Penjing	IVORY	PWSA046.IVORY	3/8 yard (0.34m)
(E) Indienne Peony Trail	BLACK	PWSA047.BLACK	5/8 yard (0.57m)
(F) Voyaging Koi	BLUE	PWSA048.BLUE	1 1/8 yards (1.03m)
(G) Bamboo & Bird	MULTI	PWSA049.MULTI	1/3 yard (0.30m)
(H) Chinoiserie Hall	GREEN	PWSA051.GREEN	1/3 yard (0.30m)
(I) LG Crane & Frog	MULTI	PWSA052.MULTI	5/8 yard (0.57m)
(J) Emperor Peony	MULTI	PWSA053.MULTI	1/3 yard (0.30m)
(K) Fusang Tree	GREEN	PWSA054.GREEN	1/3 yard (0.30m)
(L) Seaweed Dot	NAVY	PWWM008.NAVYX	3 yards (2.72m)
(M) Designer Essential Solid	TWINKLE	CSFSESS.TWINKLE	1/8 yard (0.11m)

* includes binding

Backing (Purchased Separately)

44" (1.12m) wide

Crane & Frog IVORY PWSA050.IVORY 4 3/4 yards (4.34m)

OR

108" (2.74m) wide

Strawberry Thief LINEN QBWM001.LINEN 2 1/2 yards (2.29m)

Additional Recommendations

- 100% cotton thread in colors to match
- 63" x 82" (1.60m x 2.08m) batting



Preparation

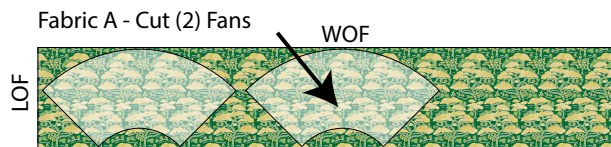
1. Print template patterns (page 8-9) at 100% and measure to confirm accuracy of printout. Tape Edge template pieces together as directed.
2. Trace onto template plastic or another sturdy material and cut out on the outer line to make cutting templates. For the Fan template, flip the half pattern over along the dashed line and trace again to make the full Fan template. If desired, mark a hole at the quarter inch seam allowance at the corners to aid in piecing accuracy.

Cutting

WOF = Width of Fabric

Fabrics A, G, H, J, and K, cut from each:

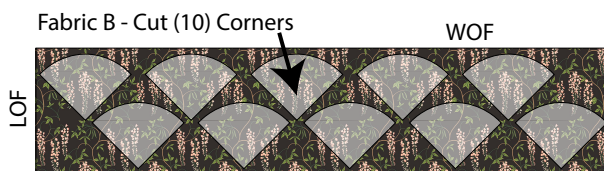
2 fans using Fan Template, and following placement as shown in the **Fabric A** cutting diagram for proper grain placement and keeping all directional prints right reading towards the top of the fan shape.



Fabric B, cut:

10 corners using Corner Template, following placement as shown in the **Fabric B** cutting diagram for proper grain placement and to keep directional prints right reading as shown

- (1) $5\frac{1}{2}$ " x WOF; subcut
- (4) $5\frac{1}{2}$ " squares for sashing setting triangles
- (7) $2\frac{1}{2}$ " x WOF for binding



Fabric C, cut:

- (20) $1\frac{1}{2}$ " x WOF for stripsets

Fabric D, cut:

8 corners using Corner Template, as in **Fabric B** cutting diagram

Fabrics E and I, cut from each:

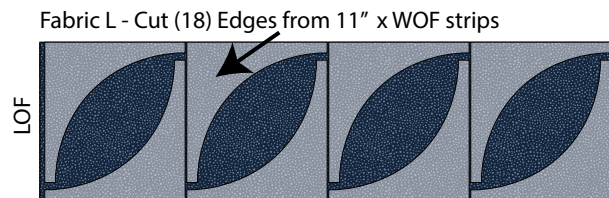
4 fans using Fan Template, as in **Fabric A** cutting diagram

Fabric F, cut:

- (2) $15\frac{1}{2}$ " x WOF; subcut
- (3) $15\frac{1}{2}$ " squares for side setting triangles
- (2) 8" squares for corner setting triangles

Fabric L, cut:

- (3) 11" x WOF; then subcut
- (18) edge pieces using Edge Template, rotating each piece as shown in the **Fabric L** cutting diagram



- (34) $1\frac{1}{2}$ " x WOF for stripsets
- (9) $1\frac{1}{2}$ " x WOF; subcut
- (36) $1\frac{1}{2}$ " x $9\frac{1}{2}$ " strips

Fabric M, cut:

- (1) $1\frac{1}{2}$ " x WOF; subcut
- (18) $1\frac{1}{2}$ " squares

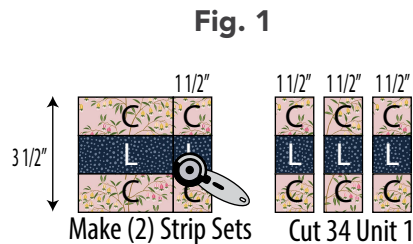
Instructions

Notes:

- Use a $\frac{1}{4}$ " seam allowance throughout. Sew all pieces with right sides together and raw edges even using matching thread. Press after each seam as directed in the pattern.
- The long, straight edges of the Edge Template include a $\frac{1}{2}$ " seam allowance, to allow some leeway in sewing with a perfect quarter-inch seam allowance when sewing curved seams. Completed Fan units will all be trimmed to the same size.

Block Construction

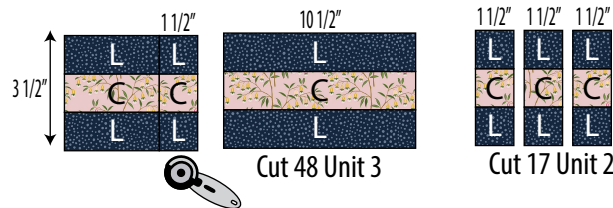
1. Stitch a **Fabric L** $1\frac{1}{2}$ " x WOF strip lengthwise between 2 **Fabric C** $1\frac{1}{2}$ " x WOF strips and press towards the darker fabric. The completed strip set should measure $3\frac{1}{2}$ " high including seam allowances. Make a total of 2 strip sets. From these, cut 34 of Unit 1, each $1\frac{1}{2}$ " wide. **Fig. 1**



2. Sew a **Fabric C** $1\frac{1}{2}$ " x WOF strip lengthwise between 2 **Fabric L** $1\frac{1}{2}$ " x WOF strips and press towards the darker fabric. The completed strip set should measure $3\frac{1}{2}$ " high including seam allowances. Make a total of 16 strip sets. From these, cut (48) of Unit 3, each $10\frac{1}{2}$ " wide. From the leftovers, cut (17) of Unit 2, each $1\frac{1}{2}$ " wide. **Fig. 2**

Fig. 2

Make (16) Strip Sets



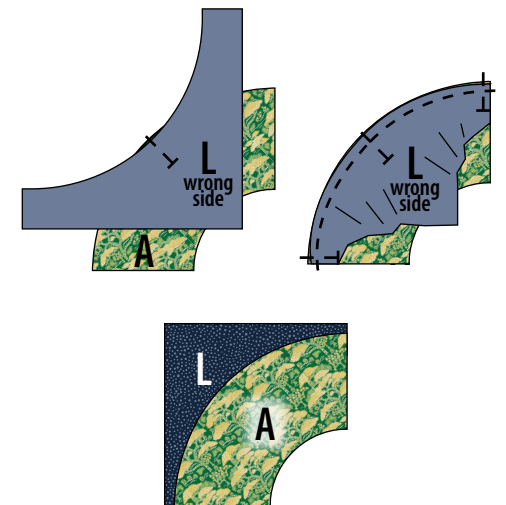
3. Stitch a Unit 2 between 2 of Unit 1, nesting seams, to make a Unit 4. Make a total of 17 Unit 4 ($3\frac{1}{2}$ " square unfinished). **Fig. 3**

Fig. 3

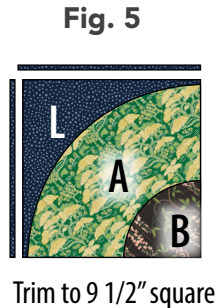


4. Fold a **Fabric L** edge piece in half and mark the center of curved edge. Fold a **Fabric A** fan in half and mark the center on long curved edge. Arrange the edge piece right sides together with the fan piece, matching center marks and pin at the creases. Note: you may find it easier to work with the fan on top so you can ease in the fabric as you work. Arrange corners so the straight edges line up and pin. Pin along curved edge if needed. Stitch curved seam. Press towards the fan piece. **Fig. 4**

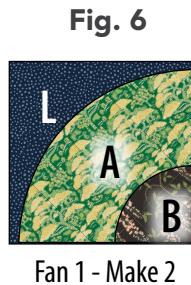
Fig. 4



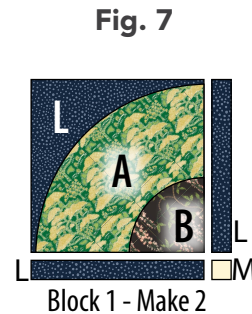
5. In the same way, add a **Fabric B** corner to the opposite edge of the **Fabric A** fan. Then trim only the **Fabric L** sides so the Fan unit is 9½" square. **Fig. 5**



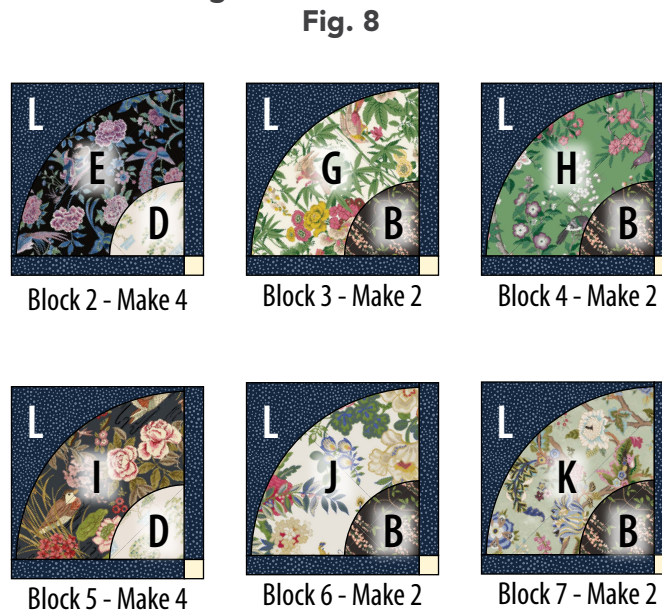
6. Repeat steps 4 and 5 to make 2 of Fan 1. **Fig. 6**



7. Arrange the Fan 1 unit, a **Fabric M** 1½" square, and 2 **Fabric L** 1½" x 9½" strips in 2 rows as shown. Sew rows together, pressing towards the darker fabric. Make a total of 2 Block 1 (10½" square unfinished). **Fig. 7**



8. Repeat steps 4 -7 to make Blocks 2 – 7 in the quantities and fabric pairings shown below. **Fig. 8**

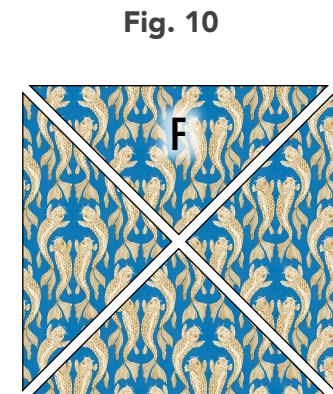


Quilt Top Assembly

9. Cut a **Fabric F** 8" square in half diagonally from corner to corner. Cut the second **Fabric F** 8" square in half in the opposite direction. These are the corner setting triangles. **Fig. 9**



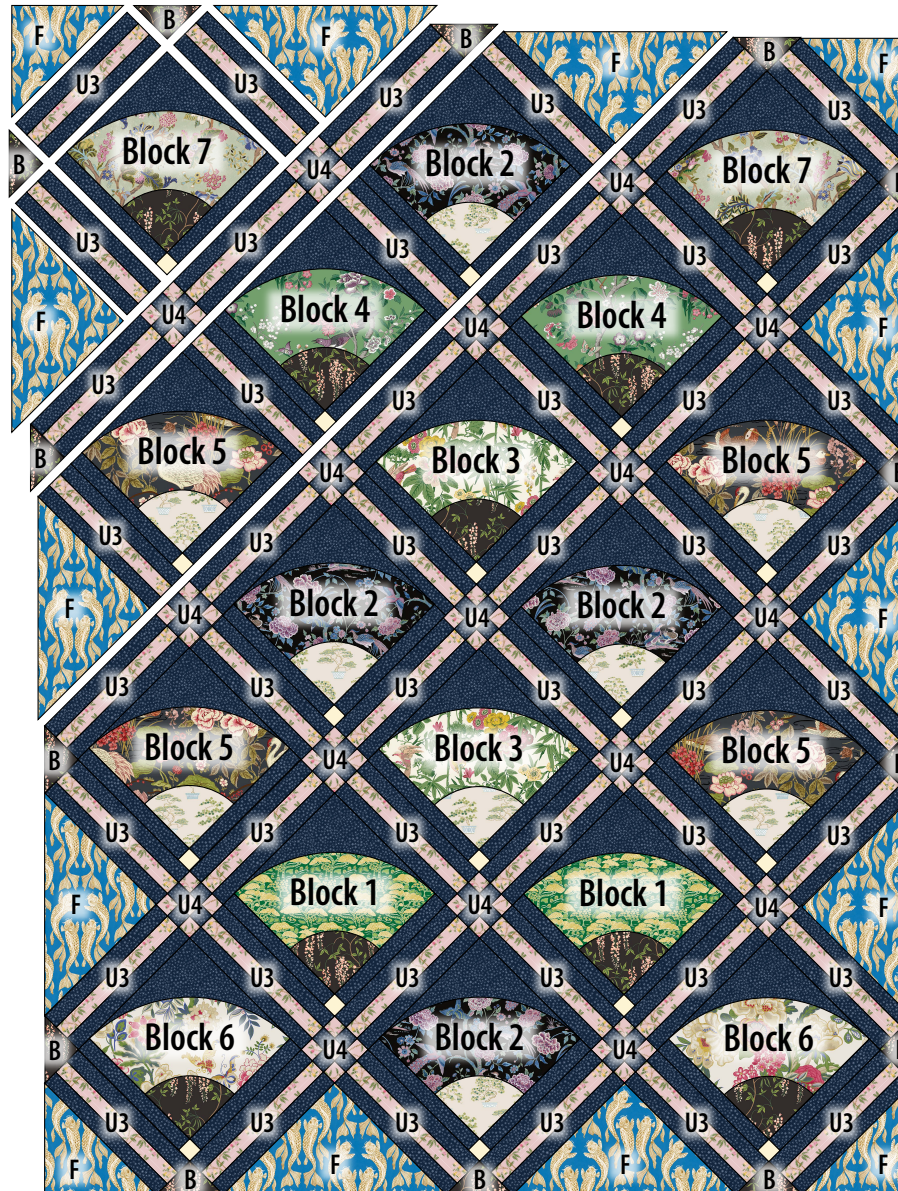
10. Cut all the **Fabric F** 15½" squares and **Fabric B** 5½" squares in half diagonally twice. These are the edge setting triangles. Note that not all triangles will be used. **Fig. 10**



11. Noting the **Quilt Layout** diagram (page 7), arrange the blocks, the Unit 3's and Unit 4's, the **Fabric B** 5½" triangles, and the **Fabric F** 15½" and 8" triangles into diagonal rows, making sure the directional prints in all the setting triangles are oriented right reading.
12. Sew the Unit 3 and **Fabric B** triangles into rows, and sew the blocks, remaining Unit 3's, and Unit 4's into rows. Then sew the rows together to complete the quilt top 48½" x 60½" (unfinished).
13. Sew together the 2½" **Fabric B** binding strips end-to-end using diagonal seams. Press seams open. Press the binding strip in half wrong sides together.
14. Layer backing (wrong side up), batting, and quilt top (right side up). Baste the layers together and quilt as desired. Trim excess batting and backing even with the top after quilting is completed.
15. Leaving an 8" tail of binding, sew the binding to the top of the quilt through all layers matching all raw edges. Miter corners. Stop approximately 12" from where you started. Lay both loose ends of binding flat along quilt edge. Where the loose ends meet, fold them back on themselves and press to form a crease. Using this crease as your stitching line, sew the two open ends of the binding right sides together. Trim seam to ¼" and press open. Finish sewing binding to quilt.
16. Turn the binding to the back of quilt and hand-stitch in place.

Finishing

Quilt Layout



Framed Fans
Edge Template Pattern
9 3/4" x 9 3/4"
when assembled

Framed Fans
Corner
Template Pattern
4 1/2" x 4 1/2"

*** Measure templates before cutting to confirm printing at 100%***

This square should
measure 1" x 1"
(2.54cm x 2.54cm)
when printed.

Framed Fans - Templates Page 2

*** Measure templates before cutting to confirm printing at 100%***

This square should
measure 1" x 1"
(2.54cm x 2.54cm)
when printed.

