



## Fruitopia Fussie Quilt

**Featuring Fruitopia by Helen Godden, Chromatics and Designer Essential Solids by FreeSpirit Fabrics**

Framed fussies. Pretty patches from Helen Godden's Fruit Mandala fabric become beautiful block centers in this design. A splash of Stargazer pink and an easy mitered border surround the center piecework with stunning fruits and florals.

**Technique:** Pieced

**Skill Level:** Advanced Beginner

**Finished Size of Project:**

52½" x 52½" (1.33m x 1.33m)

**Finished Block Size:**

5½" x 5½" (13.97cm x 13.97cm)

**Project designed by:** FreeSpirit Fabrics

**Notes:**

- Please note that the cover photo is a digital image. Due to variations in individual fussy cutting, your quilt top may not look identical.
- All possible care has been taken to ensure the accuracy of this pattern. We are not responsible for printing errors or the manner in which individual work varies. Please read the instructions carefully before starting this project. If kitting, it is recommended a sample is made to confirm accuracy.

## FABRIC REQUIREMENTS (Tech edited by: Julie Kentner)

Design	Color	Item ID	Yardage
A Fruit Mandala	Multi	PWHG010.MULTI	2 $\frac{5}{8}$ yards (2.40m)
B Fruitopia Border	Charcoal	PWHG001.CHARCOAL	2 yards (1.83m)
C Designer Essential Solids	Stargazer	CSFSESS.STARGAZER*	$\frac{3}{4}$ yard (0.69m)
D Medallion	Pea	PWFS062.PEA	$\frac{2}{3}$ yard (0.60m)
E Arches	Arugula	PWFS058.ARUGULA	$\frac{1}{2}$ yard (0.46m)
F Foliage	Forest	PWFS052.FOREST	$\frac{1}{2}$ yard (0.46m)

\* includes binding

## Backing (Purchased Separately)

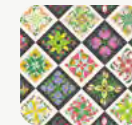
### 44" (1.12m) wide

Fruitopia Allover	Cream	PWHG008.CREAM	3 $\frac{1}{2}$ yards (3.20m)
-------------------	-------	---------------	-------------------------------

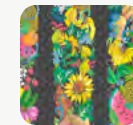
## ADDITIONAL REQUIREMENTS

- 100% cotton thread in colors to match
- 60" x 60" (1.52m x 1.52m) batting

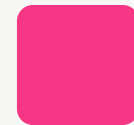
## Swatches



A



B



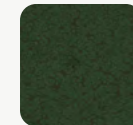
C



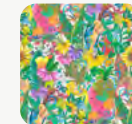
D



E



F



44"

## CUTTING

WOF = Width of Fabric

LOF = Length of Fabric

**Fabric A, fussy cut:**

(28) 4½" on-point dark squares

(13) 4½" on-point light squares

**Fabric B, fussy cut:**

(4) 6¼" x LOF for outer borders, capturing 1" to 1½" of the grey background texture along one long edge of each outer border within the 6¼" width

**Fabric C, cut:**

(6) 2½" x WOF for binding

(4) 1½" x WOF; sub-cut

(2) 1½" x 39½" inner side borders

(2) 1½" x 41½" inner top/bottom borders

**Fabric D, cut:**

(15) 1¼" x WOF; sub-cut

(50) 1¼" x 6" rectangles

(50) 1¼" x 4½" rectangles

**Fabric E, cut:**

(10) 1¼" x WOF; sub-cut

(32) 1¼" x 6" rectangles

(32) 1¼" x 4½" rectangles

**Fabric F, cut:**

(2) 6⅜" x WOF; sub-cut

(8) 6⅜" squares

(2) 4¾" squares.

Cut each square once diagonally, from corner to corner to make

(16) side triangles

(4) corner triangles

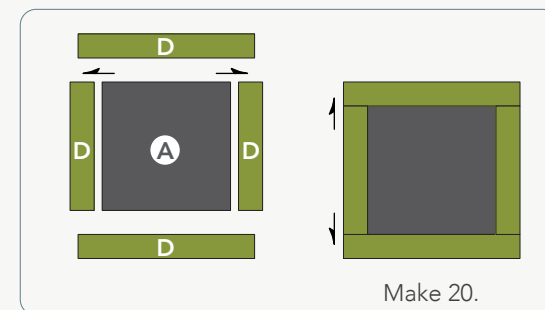
## SEWING

**Notes:**

- All seam allowances are ¼" (.64cm) unless otherwise noted.
- Sew pieces right sides together.
- Press seam allowances open unless otherwise indicated.

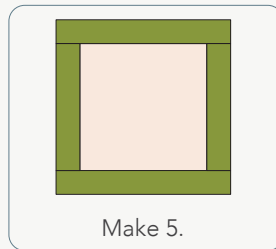
- 1 Sew a 1¼" x 4½" **Fabric D** rectangle to the left and right sides of a 4½" **Fabric A** fussy-cut dark square. Press. Sew a 1¼" x 6" **Fabric D** rectangle to the top and bottom of the square (**Fig. 1**). Press. Repeat to make a total of (20) framed fussy-cut dark squares.

**Fig. 1**



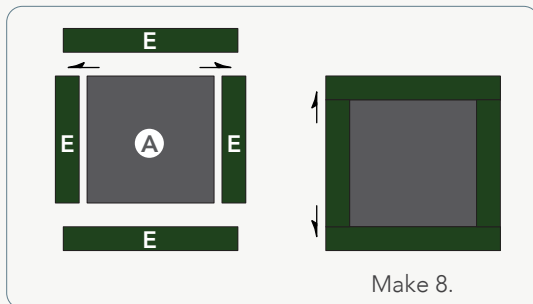
- 2** Repeat Step 1 using (5) 4½" **Fabric A** fussy-cut light squares to make a total of (5) framed fussy-cut light squares (**Fig. 2**).

**Fig. 2**



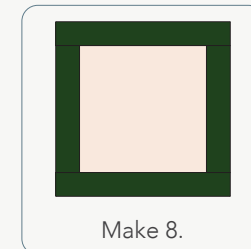
- 3** Sew a 1¼" x 4½" **Fabric E** rectangle to the left and right sides of a 4½" **Fabric A** fussy-cut dark square. Press. Sew a 1¼" x 6" **Fabric E** rectangle to the top and bottom of the square (**Fig. 3**). Press. Repeat to make a total of (8) framed fussy-cut dark squares.

**Fig. 3**



- 4** Repeat Step 3 using (8) 4½" **Fabric A** fussy-cut light squares to make a total of (8) framed fussy-cut light squares (**Fig. 4**).

**Fig. 4**



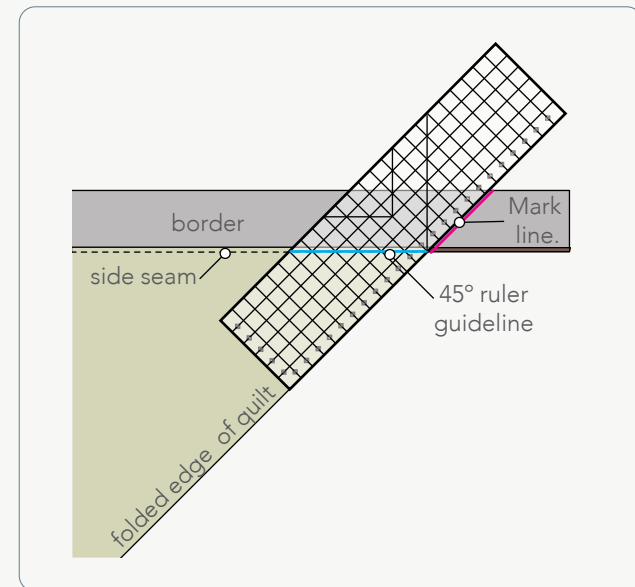
## TOP ASSEMBLY

- 5** Referring to the **Quilt Layout** Diagram (page 7) for block and fabric placement, arrange the blocks and **Fabric F** side triangles into (9) diagonal rows. Sew the blocks and side triangles in each row together along adjacent edges. Press following the directional arrows shown in the Quilt Layout.
- 6** Sew the diagonal rows together along adjacent edges. Press seam allowances in one direction.
- 7** Sew the long edge of a **Fabric F** corner triangle to each corner of the quilt center. Press seam allowance towards **Fabric F**.



- 8 Sew (1)  $1\frac{1}{2}$ " x  $39\frac{1}{2}$ " **Fabric C** inner side border to the left and right sides of the quilt center. Press seam allowances toward the side borders. Sew (1)  $1\frac{1}{2}$ " x  $41\frac{1}{2}$ " **Fabric C** inner top/bottom border to the upper edge, and the other to the lower edge of the quilt center. Press seam allowances toward the borders.
- 9 Center (1) **Fabric B** outer border on each outer edge of the quilt top with the grey background closest to the quilt center. Sew each border to the quilt top, starting and stopping  $\frac{1}{4}$ " (.64cm) away from each corner. Backstitch at each end. Press the side border seam allowances away from the quilt center. Press the top and bottom border seam allowances toward the quilt center.
- 10 Miter the borders by folding one corner of the quilt at a 45-degree angle, right sides together, with the borders on top of each other and the seam allowances nested. Align an acrylic ruler with the folded edge of the quilt, placing the ruler's 45-degree guideline on the stitched border side seam. Draw a seam guideline from the corner of the quilt top to the outer edge of the border (**Fig. 5**). Pin the borders together and sew directly on the marked guideline, from the quilt top corner to the outer edge of the border. Check to make sure the border and corner lie flat, then trim the excess border fabric, leaving a  $\frac{1}{4}$ " (.64cm) seam allowance. Press. Repeat for the remaining quilt corners.

Fig. 5



## FINISHING

- 11** Sew together (6) 2½" x WOF **Fabric C** binding strips end-to-end using diagonal seams. Press the seams open. Press the binding strip in half wrong sides together and set aside until quilt is ready for binding.
- 12** Once the top is complete it is ready for quilting! Quilts can be sent out for longarm quilting or you can quilt it yourself. If you are sending the quilt out, it is important to discuss backing and batting requirements with the quilter to ensure they have everything needed to properly finish the quilt.
- 13** If quilting yourself and using 44" fabric for backing, choose your favorite method for piecing (taking time to remove selvages), then layer, baste and quilt. Once finished, trim excess batting and backing and bind according to your favorite method.
- 14** To complete binding by hand, it must first be machine sewn to the quilt top. Leaving an 8" tail of binding, sew binding to top of quilt through all layers, matching raw edges. Miter corners. Stop approximately 12" from where you started. Lay both loose ends of binding flat along quilt edge. Where the two loose ends meet, fold each side back on themselves and press to form a crease. Using this crease as your stitching line, sew the two open ends of the binding together right sides together. Trim seam to ¼" and press seam open. The binding will naturally fold, wrong sides together, and lay along the quilt edge. Finish sewing binding to quilt. Turn and press the binding to the back of the quilt and hand stitch in place.
- 15** If machine binding, complete the steps above only attach the binding to the BACK of the quilt, turn and press to the front of the quilt and machine stitch in place.

Quilt Layout

