



Featuring Fruitopia by Helen Godden

# Woodford Quilt

Finished Size: 72" x 72" (1.82m x 1.82m)

Project designed by Lisa Alley - Bear Hug Quiltworks

Purchase pattern at [bearhugquiltworks.com](http://bearhugquiltworks.com)

Technique: Pieced | Skill Level: Advanced Beginner



## Fabric Requirements

DESIGN	COLOR	ITEM ID	YARDAGE
(A) Fruitopia Border	Charcoal	PWHG001.CHARCOAL	1¾ yards (1.60m)
(B) Fruit Scallops	Multi	PWHG002.MULTI	1¼ yards (1.14m)
(C) Fruit Salad & Charcoal	Charcoal	PWHG004.CHARCOAL	¼ yard (0.23m)
(D) Feeling MelonMolly	Aqua	PWHG005.AQUA	¼ yard (0.23m)
(E) For Vincent	Blue	PWHG006.BLUE	¼ yard (0.23m)
(F) Fruitopia Allover	Cream	PWHG008.CREAM	¼ yard (0.23m)
(G) We Make A Great Pear	Purple	PWHG009.PURPLE	¼ yard (0.23m)
(H) Bells of St Clements	Pink	PWHG011.PINK	¼ yard (0.23m)
(I) Avocado Toss	Orange	PWHG012.ORANGE	¼ yard (0.23m)
(J) Strawberry Fields	Blue	PWHG013.BLUE	¼ yard (0.23m)
(K) Dragonfly Swirls	Cream	PWHG014.CREAM	1⅞ yards (1.03m)
(L) Shot Cotton	Glacier	SCGP124.GLACIER*	¾ yard (0.69m)
(M) Shot Cotton	Aubergine	SCGP117.AUBERGINE	¼ yard (0.23m)

\* includes binding

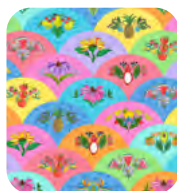
## Backing (Purchased Separately)

**44" (1.12m) wide**

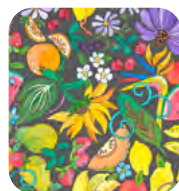
Feeling MelonMolly	Teal	PWHG005.AQUA	4½ yards (4.11m)
--------------------	------	--------------	------------------



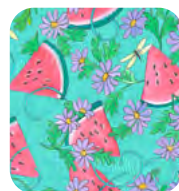
(A)



(B)



(C)



(D)



(E)



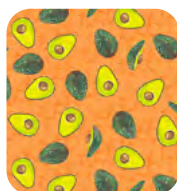
(F)



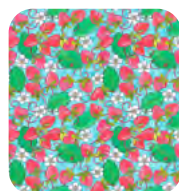
(G)



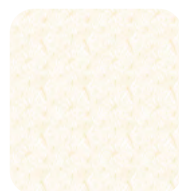
(H)



(I)



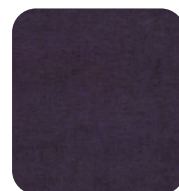
(J)



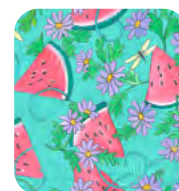
(K)



(L)



(M)



Backing  
44"

*If kitting, refer to the final pattern for yardage amounts, it is recommended that a sample is made to confirm accuracy.*