

Free Spirit 



Featuring Morris & Co. X Emery Walker's House

Garden Pathways Quilt

Finished Size: 95¹/₄" x 95¹/₄"

Project designed by Linda McGibbon - Lakeview Quilting

Purchase pattern at lakeviewquilting2.com

Technique: Pieced | Skill Level: Advanced Beginner

freespiritfabrics.com

Fabric Requirements

DESIGN	COLOR	ITEM ID	YARDAGE
(A) Bird	TUMP	PWWM097.TUMP	2½ yards (2.29m)
(B) Bird	WEBBS BLUE	PWWM097.WEBBSBLUE	2½ yards (1.94m)
(C) Bower	HERBALL	PWWM099.HERBALL	¾ yard (0.69m)
(D) Sunflower	HERBALL	PWWM106.HERBALL	2 yards (1.83m)
(E) Emery's Willow	BLUE	PWWM109.BLUE*	1¾ yards (1.26m)
(F) Emery's Willow	RUSSET	PWWM109.RUSSET	1½ yards (1.37m)
(G) Trent	LEAFY	PWWM111.LEAFY	1¾ yards (1.60m)
(H) Trent	WEBBS BLUE	PWWM111.WEBBSBLUE	½ yard (0.46m)
(I) Rose & Thistle	MADDER	PWWM112.MADDER	1 yard (0.91m)
(J) Elmcote	DEARLE BLUE	PWWM113.DEARLEBLUE	1¾ yards (1.49m)
(K) Marigold	TANXX	PWWM006.TANXX	1¼ yards (1.14m)
(L) Jasmine	BLUSH	PWWM059.BLUSH	¾ yard (0.69m)

* includes binding

Backing (Purchased Separately)

44" (1.12m) wide

Bird WEBBS BLUE PWWM097.WEBBSBLUE 8¼ yards (7.54m)

OR

108" (2.74m) wide

Strawberry Thief LINEN QBWM001.LINEN 3 yards (2.74m)



(A)



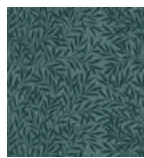
(B)



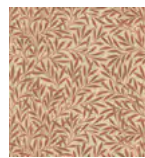
(C)



(D)



(E)



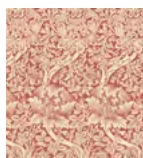
(F)



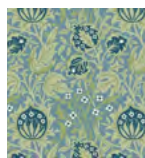
(G)



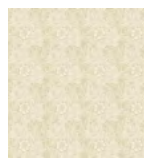
(H)



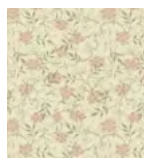
(I)



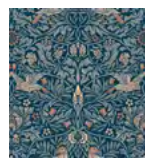
(J)



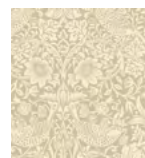
(K)



(L)



Backing
44"



Backing
108"

If kitting, refer to the final pattern for yardage amounts, it is recommended that a sample is made to confirm accuracy.