



*Free Spirit* 

## Garden View Quilt

Featuring Garden Delight and  
Textures by Sue Penn

<b>Collection:</b>	Garden Delight and Textures by Sue Penn
<b>Technique:</b>	Pieced
<b>Skill Level:</b>	Advanced Beginner
<b>Finished Size:</b>	48" x 56" (1.22m x 1.42m)

*All possible care has been taken to assure the accuracy of this pattern. We are not responsible for printing errors or the manner in which individual work varies. Please read the instructions carefully before starting this project. If kitting, it is recommended a sample is made to confirm accuracy.*



Project designed by Sue Penn | Tech edited by Alison M. Schmidt

## Fabric Requirements

DESIGN	COLOR	ITEM ID	YARDAGE
(A) Garden	MULTI	PWSP060.MULTI	1½ yards (1.03m)
(B) Plaid	YELLOW	PWSP036.YELLOW	⅛ yard (0.11m)
(C) Tonal Graffiti	RASPBERRY	PWSP037.RASPBERRY	⅛ yard (0.11m)
(D) Tonal Graffiti	ORANGE	PWSP037.ORANGE	⅛ yard (0.11m)
(E) Brushstrokes	AQUA	PWSP018.AQUA	⅛ yard (0.11m)
(F) Pebble	LIME	PWSP011.LIME	⅛ yard (0.11m)
(G) Brushstrokes	GREEN	PWSP018.GREEN	⅛ yard (0.11m)
(H) Pebble	PURPLE	PWSP011.PURPLE	⅛ yard (0.11m)
(I) Medallions	NAVY	PWSP016.NAVY*	⅝ yard (0.57m)
(J) Bliss	RASPBERRY	PWSP061.RASPBERRY	¼ yard (0.23m)
(K) Medallions	RED	PWSP016.RED	⅜ yard (0.34m)
(L) Circle Story	MULTI	PWSP059.MULTI	⅞ yard (0.80m)

\* includes binding

## Backing (Purchased Separately)

44" (1.12m) wide

Flowerburst

Red

PWSP062.RED

3¼ yards (2.97m)

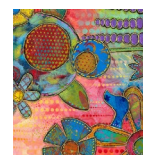
OR

108" (2.74m) wide

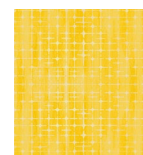
1⅝ yards (1.49m)

## Additional Recommendations

- 100% cotton thread in colors to match
- 56" x 64" (143cm x 163cm) quilt batting



(A)



(B)



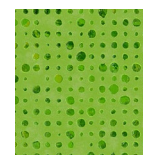
(C)



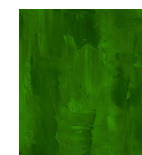
(D)



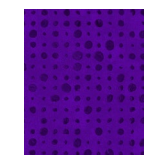
(E)



(F)



(G)



(H)



(I)



(J)



(K)



(L)



Backing  
44"

## Cutting

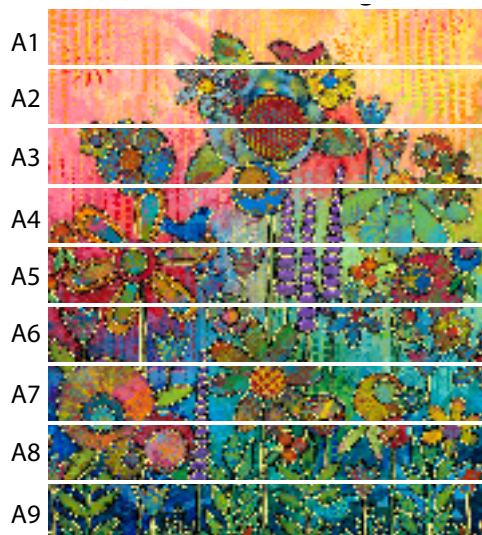
WOF = Width of Fabric

**Note:** The portion of the **Fabric A** Garden print shown in Figure 1 may differ, the fabric design is printed as running yardage, not a panel. To feature the exact same section shown in the finished quilt image, purchase the fabric in person at your local quilt shop or buy additional yardage to allow for this specific cut of the design.

### Fabric A, cut referring to Figure 1:

- (1) 36½" x WOF; subcut
  - (9) strips 36½" x 4½", starting at the pink/yellow 'sky' portion of the design (the length of each strip will run parallel to the selvage).

**Fig. 1**  
Fabric A Cutting Diagram



### Fabrics B - H, cut from each:

- (1) 1½" x WOF, then trim each strip down to 36½" long

### Fabric I, cut:

- (1) 1½" x WOF, then trim strip down to 36½" long
- (6) 2½" x WOF for binding

### Fabric J, cut:

- (5) 1½" x WOF for inner border

### Fabric K, cut:

- (7) 1½" x WOF; subcut
  - (4) 1½" x 4½"
- Reserve the remaining (6) WOF strips for the middle border

### Fabric L, cut:

- (1) 4½" x WOF; subcut
  - (4) 4½" x 4½"
- (3) 4½" x WOF for side outer borders
- (2) 4½" x WOF, then trim each strip down to 38½" long for the top/bottom outer borders

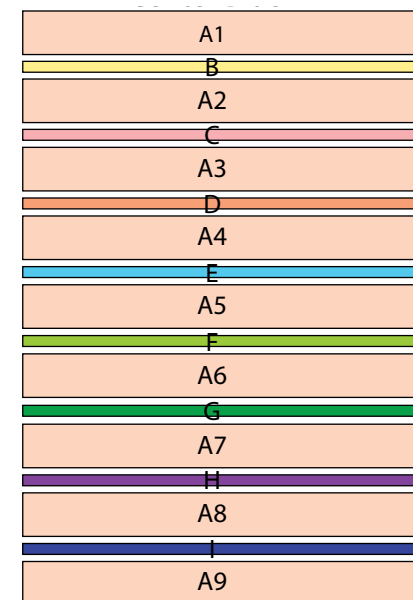
## Instructions

**Note:** Use a ¼" (.64cm) seam allowance throughout. Sew all pieces with right sides together and raw edges even. Press after each seam.

## Block Construction

1. Refer to **Figure 2** to arrange all the **Fabric A** strips in order from **A1** to **A9** with the 1½" x 36½" **Fabric B, C, D, E, F, G, H** and **I** strips in between.
2. Sew the **A1-A8** strips together in pairs, sewing the odd-numbered pairs in one direction and the even-numbered pairs in the opposite direction. Press towards **Fabric A**. Then sew the pairs together in order and add strip **A9** to the bottom edge to complete the Center Block (36½" x 44½").

**Fig. 2**  
Center Block



3. Refer to **Figure 3**. Sew a  $1\frac{1}{2}$ " x  $4\frac{1}{2}$ " **Fabric K** strip to each short end of a  $4\frac{1}{2}$ " x  $38\frac{1}{2}$ " **Fabric L** strip, then add  $4\frac{1}{2}$ " **Fabric L** square at each end to make a top/bottom outer border. Repeat to make a second. Set aside.

**Fig. 3**

**Top/Bottom Border**  
(make 2)



## Quilt Top Assembly

Refer to the **Quilt Layout** diagram (page 5) for the following steps. Press after each seam away from the center.

4. Sew 3 of the **Fabric J** WOF strips together end-to-end. Measure the Center Block vertically through the middle and cut 2 side inner borders to fit ( $44\frac{1}{2}$ " long). Sew the side inner borders to the left and right sides of the Center Block.
5. Measure the Center Block horizontally through the middle. Trim the 2 remaining **Fabric J** WOF strips to fit ( $44\frac{1}{2}$ " long) for the top/bottom inner borders. Sew to the top and bottom of the Center Block.
6. Repeat step 4 to make and add side middle and outer borders from the **Fabric K** and **Fabric L** WOF strips (both  $46\frac{1}{2}$ " long). Sew the side borders together, then sew to the quilt center.

7. Sew the remaining **Fabric K** strips together end-to-end. Cut 2 top/bottom middle borders to fit the border made in step 3.
8. Sew the step 7 borders to the top and bottom of the quilt center.

## Finishing

9. Sew together the  $2\frac{1}{2}$ " **Fabric I** binding strips end-to-end using diagonal seams. Press seams open. Press the binding strip in half wrong sides together.
10. Layer backing (wrong side up), batting, and quilt top (right side up). Baste the layers together and quilt as desired. Trim excess batting and backing even with the top after quilting is completed.
11. Leaving an 8" tail of binding, sew the binding to the top of the quilt through all layers matching all raw edges. Miter corners. Stop approximately 12" from where you started. Lay both loose ends of binding flat along quilt edge. Where the loose ends meet, fold them back on themselves and press to form a crease. Using this crease as your stitching line, sew the two open ends of the binding right sides together. Trim seam to  $\frac{1}{4}$ " and press open. Finish sewing binding to quilt.
12. Turn the binding to the back of quilt and hand-stitch in place.

## Quilt Layout

