

Free Spirit 



Featuring Good Gracious & Love Always, AM by Anna Maria

Gingham Daydream Quilt

Finished Size: 52" x 68" (1.32m x 1.73m)

Project designed by Melissa Mortenson - Polka Dot Chair. Re-colored by FreeSpiritfabrics

Purchase pattern at polkadotchair.com

Technique: Pieced | Skill Level: Advanced Beginner

freespiritfabrics.com



Gingham Daydream Quilt

Fabric Requirements

DESIGN	COLOR	ITEM ID	YARDAGE
(A) Castle Tops	Juicy	PWAH218.JUICY	1/3 yard (0.30m)
(B) Castle Tops	Salty	PWAH218.SALTY	1/3 yard (0.30m)
(C) Fair Isle	Sky	PWAH219.SKY	1/3 yard (0.30m)
(D) Fair Isle	Sun	PWAH219.SUN	1/3 yard (0.30m)
(E) Happy Blooms	Caramel	PWAH220.CARAMEL	1/3 yard (0.30m)
(F) Happy Blooms	Grape	PWAH220.GRAPE*	3/4 yard (0.69m)
(G) New Forest	Shadowed	PWAH221.SHADOWED	1/3 yard (0.30m)
(H) Silverweed	Coral	PWAH222.CORAL	1/3 yard (0.30m)
(I) Silverweed	Island	PWAH222.ISLAND	1/3 yard (0.30m)
(J) Town Meeting	Sweet	PWAH223.SWEET	1/3 yard (0.30m)
(K) Swanmore	Evening	PWAH224.EVENING	1/3 yard (0.30m)
(L) Fair Isle Small	Cranberry	PWAH226.CRANBERRY	1/3 yard (0.30m)
(M) Echinacea	Maraschino	PWAH075.MARASCHINO	1/3 yard (0.30m)
(N) Fortune	Toffee	PWAH087.TOFFEE	1/3 yard (0.30m)
(O) Cathedral Multi	Pink	PWAH203.PINK	1/3 yard (0.30m)
(P) Cathedral	Coral	PWAH202.CORAL	1/3 yard (0.30m)
(Q) In Town	Sweet	PWAH158.SWEET	1/3 yard (0.30m)
(R) Cathedral	Golden	PWAH202.GOLDEN	1/3 yard (0.30m)
(S) Echinacea	Maize	PWAH075.MAIZE	1/3 yard (0.30m)
(T) Lace	Mango	PWAH132.MANGO	1/3 yard (0.30m)
(U) Fortune	Moonlight	PWAH087.MOONLIGHT	1/3 yard (0.30m)
(V) Cathedral Multi	Blue	PWAH203.BLUE	1/3 yard (0.30m)
(W) Echinacea Glow	Amethyst	PWAH149.AMETHYST	1/3 yard (0.30m)

* includes binding

Backing (Purchased Separately)

44" (1.12m) wide

Beata's Garden

OR

108" (2.74m) wide

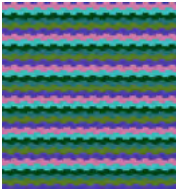
Town Meeting

Rust	PWAH217.RUST	4 yards (3.66m)
Carnival	QBAH010.CARNIVAL	2 yards (1.83m)

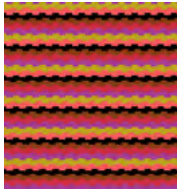
Fabric Swatches on next page...

If kitting, refer to the final pattern for yardage amounts, it is recommended that a sample is made to confirm accuracy.

Fabric Swatches



(A)



(B)



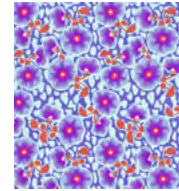
(C)



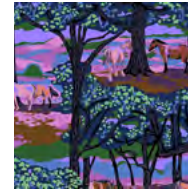
(D)



(E)



(F)



(G)



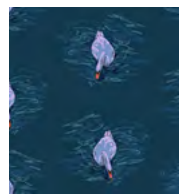
(H)



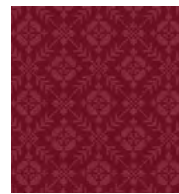
(I)



(J)



(K)



(L)



(M)



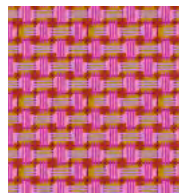
(N)



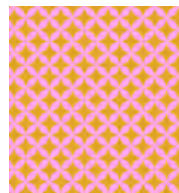
(O)



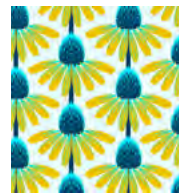
(P)



(Q)



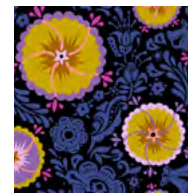
(R)



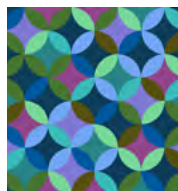
(S)



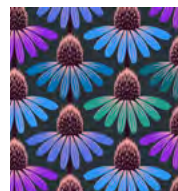
(T)



(U)



(V)



(W)



Backing
44"



Backing
108"