

Free Spirit 



Featuring Emery Walker by The Original Morris & Co.

Grams Garden Quilt

Finished Size: 66" x 66" (1.68m x 1.68m)

Project designed by Jennifer McClanahan - Sweet Tea Pattern Co

Purchase pattern at sweetteapatternco.com

Technique: Pieced | Skill Level: Advanced Beginner

freespiritfabrics.com

Fabric Requirements

DESIGN	COLOR	ITEM ID	YARDAGE
(A) Mini Pink & Rose	Sunflower	PWWM076.SUNFLOWER	FQ (45.72cm x 53.34cm)
(B) Bird	Boughs Green	PWWM097.BOUGHSGREEN	FQ (45.72cm x 53.34cm)
(C) Bluebell	Leaf Green	PWWM098.LEAFGREEN	FQ (45.72cm x 53.34cm)
(D) Bower	Indigo	PWWM099.INDIGO	½ yard (0.46m)
(E) May's Coverlet	Twining Vine	PWWM102.TWININGVINE*	1 yard (0.91m)
(F) Small Rose	Weld	PWWM104.WELD	FQ (45.72cm x 53.34cm)
(G) Rose	Rose	PWWM105.ROSE	¾ yard (0.69m)
(H) Sunflower	Berry	PWWM106.BERRY	½ yard (0.46m)
(I) Wallflower	Chrysanthemum	PWWM107.CHRYSANTHEMUM	½ yard (0.46m)
(J) Small Wallflower	Blue	PWWM108.BLUE	½ yard (0.46m)
(K) Emery's Willow	Woad Blue	PWWM109.WOADBLUE	½ yard (0.46m)
(L) Marigold	Navy	PWWM006.NAVYX	3½ yards (3.20 m)

* includes binding

Backing (Purchased Separately)

44" (1.12m) wide

Bird Boughs Green PWWM097.BOUGHSGREEN 4 yards (3.66m)

OR

108" (2.74m) wide

Pure Willow Boughs Linen QBWM008.LINEN 2 yards (1.83m)



(A)



(B)



(C)



(D)



(E)



(F)



(G)



(H)



(I)



(J)



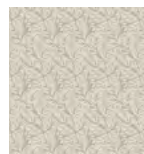
(K)



(L)



Backing
44"



Backing
108"

If kitting, refer to the final pattern for yardage amounts, it is recommended that a sample is made to confirm accuracy.