

Free Spirit



Featuring *L'Heure Bleue* by Este MacLeod

Grandma's House Quilt

Finished Size: 60" x 60" (1.52m x 1.52m)

Project designed by Jennifer McClanahan - Sweet Tea Pattern Co.

Purchase pattern at sweetteapatternco.com

Technique: Pieced | Skill Level: Intermediate

Fabric Requirements

DESIGN	COLOR	ITEM ID	YARDAGE
(A) Belle	Babyblue	PWES025.BABYBLUE	1/3 yard (0.30m)
(B) Tresor	Teal	PWES026.TEAL	1/3 yard (0.30m)
(C) Aquatique	Emerald	PWES027.EMERALD	1/3 yard (0.30m)
(D) Doux	Mint	PWES028.MINT	1/3 yard (0.30m)
(E) Blue Birds	Ultramarine	PWES029.ULTRAMARINE	1/3 yard (0.30m)
(F) Fleur	Turquoise	PWES030.TURQUOISE	1/3 yard (0.30m)
(G) Reve	Mossgreen	PWES031.MOSSGREEN	1/3 yard (0.30m)
(H) Scintille	Black	PWES032.BLACK*	1 3/4 yards (1.60m)
(I) Lily of the Valley	Midnight	PWES033.MIDNIGHT	1/3 yard (0.30m)
(J) Designer Essential Solid	Legendary	CSFSESS.LEGENDARY	2/3 yard (0.60m)
(K) Designer Essential Solid	Matcha	CSFSESS.MATCHA	2/3 yard (0.60m)
(L) Designer Essential Solid	Whimsy	CSFSESS.WHIMSY	2 3/4 yards (2.51m)

* includes binding

Backing (Purchased Separately)

44" (1.12m) wide

Lily of the Valley

OR

108" (2.74m) wide

Midnight

PWES033.MIDNIGHT

4 yards (3.66m)

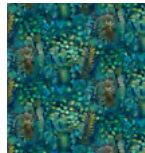
2 yards (1.83m)



(A)



(B)



(C)



(D)



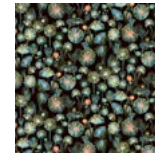
(E)



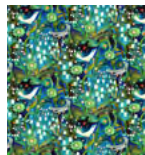
(F)



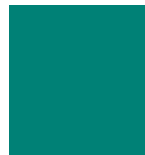
(G)



(H)



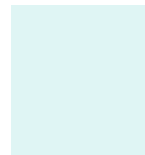
(I)



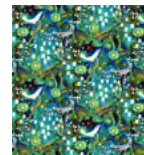
(J)



(K)



(L)



Backing
44"

If kitting, refer to the final pattern for yardage amounts, it is recommended that a sample is made to confirm accuracy.