

FreeSpirit



Featuring Laboratory by Tim Holtz

Halloween Haberdashery Quilt

Finished Size: 53" x 53" (1.35m x 1.35m)

Project designed by Melissa Mortenson - Polka Dot Chair; Re-Colored by FreeSpirit Fabrics

Purchase pattern at polkadotchair.com

Technique: Pieced | Skill Level: Advanced Beginner

freespiritfabrics.com



Halloween Haberdashery Quilt

Fabric Requirements

DESIGN	COLOR	ITEM ID	YARDAGE
(A) Anatomy	Neutral	PWTH181.NEUTRAL	¼ yard (0.23m)
(B) Curator	Multi	PWTH182.MULTI	¼ yard (0.23m)
(C) Formula	Neutral	PWTH183.NEUTRAL	¼ yard (0.23m)
(D) Specimen	Neutral	PWTH184.NEUTRAL	¼ yard (0.23m)
(E) Forgotten	Orange	PWTH185.ORANGE	¼ yard (0.23m)
(F) Periodic	Multi	PWTH186.MULTI	¼ yard (0.23m)
(G) Experiment	Green	PWTH187.GREEN	¼ yard (0.23m)
(H) Molecular	Orange	PWTH188.ORANGE*	¾ yard (0.69m)
(I) Composition	Black	PWTH189.BLACK	¼ yard (0.23m)
(J) Creepy Clippings	Neutral	PWTH190.NEUTRAL	¼ yard (0.23m)
(K) Tattered	Neutral	PWTH191.NEUTRAL	¼ yard (0.23m)
(L) Flourish	Orange	PWTH192.ORANGE	¼ yard (0.23m)
(M) Tapestry	Purple	PWTH193.PURPLE	¼ yard (0.23m)
(N) Striped	Black	PWTH194.BLACK	¼ yard (0.23m)
(O) Alchemy	Black	PWTH146.BLACK	¼ yard (0.23m)
(P) Foreboding	Black	PWTH152.BLACK	¼ yard (0.23m)
(Q) Crossbones	Black	PWTH151.BLACK	¼ yard (0.23m)
(R) Numbers	Black	PWTH063.BLACK	¼ yard (0.23m)
(S) Spellbound	Orange	PWTH148.ORANGE	¼ yard (0.23m)
(T) Principal Methods	Moss	PWTH132.MOSS	⅛ yard (0.11m)
(U) Hocus Pocus	Neutral	PWTH153.NEUTRAL	¼ yard (0.23m)
(V) Sewing Instructions	Linen	PWTH110.LINEN	¼ yard (0.23m)
(W) Butterflies	Parchment	PWTH004.PARCHMENT	¼ yard (0.23m)
(X) Cracked Shadow	Quartz	PWTH128.QUARTZ	¼ yard (0.23m)
(Y) Cobwebs	Neutral	PWTH150.NEUTRAL	¼ yard (0.23m)
(Z) Tailored	Linen	PWTH066.LINEN	¼ yard (0.23m)
(AA) Typography	Parchment	PWTH175.PARCHMENT	¼ yard (0.23m)
(AB) Expedition	Parchment	PWTH016.PARCHMENT	¼ yard (0.23m)
(AC) Tiny Stars	Linen	PWTH051.LINEN	¼ yard (0.23m)
(AD) Planks	Natural	PWTH176.NATURAL	¼ yard (0.23m)
(AE) Worn Croc	Pebble	PWTH020.PEBBLE	¼ yard (0.23m)
(AF) Model Airplanes	Parchment	PWTH174.PARCHMENT	¼ yard (0.23m)
(AG) Diamonds	Charcoal	PWTH030.CHARCOAL	¼ yard (0.23m)
(AH) Multiplication Table	Parchment	PWTH106.PARCHMENT	¼ yard (0.23m)
(AI) Provisions	Linen	PWTH115.8LINE	¼ yard (0.23m)
(AJ) Symphony	Neutral	PWTH022.NEUTR	¼ yard (0.23m)
(AK) Beloved	Neutral	PWTH149.NEUTRAL	¼ yard (0.23m)

* includes binding

Backing (Purchased Separately)

44" (1.12m) wide

Periodic Multi PWTH186.MULTI ¾ yards (2.97m)

OR

108" (2.74m) wide

Expedition Multi QBTH007.MULTI 1¾ yards (1.60m)

Fabric Swatches on next page...

If kitting, refer to the final pattern for yardage amounts, it is recommended that a sample is made to confirm accuracy.

Fabric Swatches



(A)



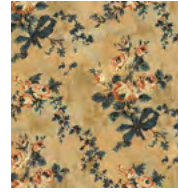
(B)



(C)



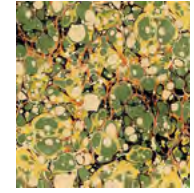
(D)



(E)



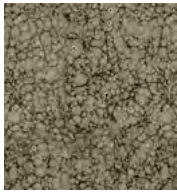
(F)



(G)



(H)



(I)



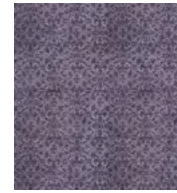
(J)



(K)



(L)



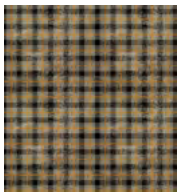
(M)



(N)



(O)



(P)



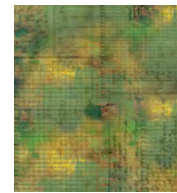
(Q)



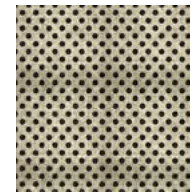
(R)



(S)



(T)



(U)



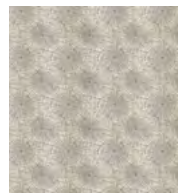
(V)



(W)



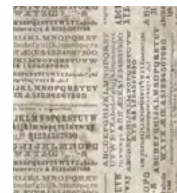
(X)



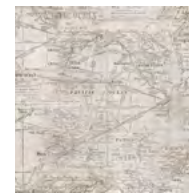
(Y)



(Z)



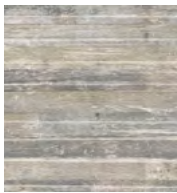
(AA)



(AB)



(AC)



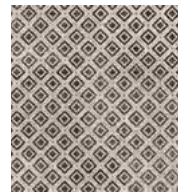
(AD)



(AE)



(AF)



(AG)



(AH)



(AI)



(AJ)



(AK)



Backing
44"



Backing
108"