



Featuring Madagascar Adventure by Daughter Earth – Katy Tanis

# High Tide Quilt

Finished Size: 42" x 56" (1.07m x 1.42m)

Project designed by Laura Piland - Slice of Pi Quilts

Purchase pattern at [sliceofpiquilts.com](http://sliceofpiquilts.com)

Technique: Bias Tape Appliqué, Quilt-as-you-go, No Curved Piecing | Skill Level: Advanced Beginner

## Fabric Requirements

DESIGN	COLOR	ITEM ID	YARDAGE
(A) Spiny Forest	SAND	PWKT002.XSAND	¼ yard (0.23m)
(B) Lemurs and Palms	JADE	PWKT003.XJADE	¼ yard (0.23m)
(C) Painted Bamboo	MULTI	PWKT004.XMULTI	¼ yard (0.23m)
(D) Jungle Vines	PURPLE	PWKT005.XPURPLE	¼ yard (0.23m)
(E) Traveler's Palm	PINK	PWKT006.XPINK	¼ yard (0.23m)
(F) Rain Dots	WHITE	PWKT007.XWHITE	¼ yard (0.23m)
(G) Dwarf Lemurs	SPRUCE	PWKT009.XSPRUCE	¼ yard (0.23m)
(H) Curled Up Lemurs	BLUE	PWKT010.XBLUE	¼ yard (0.23m)
(I) Silk Sifakas	GREEN	PWKT011.XGREEN	¼ yard (0.23m)
(J) Ringtails	PEACH	PWKT012.XPEACH	¼ yard (0.23m)
(K) Baobab Bloom	MULTI	PWKT013.XMULTI	¼ yard (0.23m)
(L) Alluaudia	LAVENDER	PWKT014.XLAVENDER	¼ yard (0.23m)
(M) Designer Essential Solids	FREEDOM BLUE	CSFSESS.FREBL*	2 yards (1.83m)

\* includes binding

NOTE: The pattern calls for bias tape to be appliqued between each section. We have called out enough yardage for the binding to include yardage for maker to make the necessary bias "tape".

## Backing (Purchased Separately)

**44" (1.12m) wide**

Field Notes

MULTI

PWKT008.XMULTI

2 yards (1.83m)

**OR**

**108" (2.74m) wide**

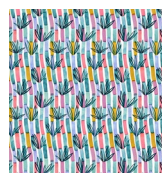
1½ yards (1.49m)



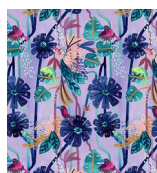
(A)



(B)



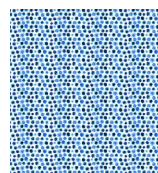
(C)



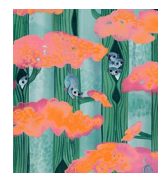
(D)



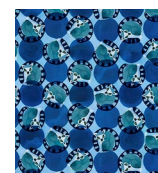
(E)



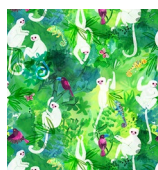
(F)



(G)



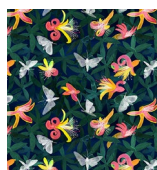
(H)



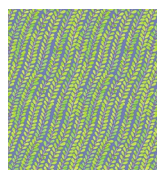
(I)



(J)



(K)



(L)



(M)



Backing  
44"

*If kitting, refer to the final pattern for yardage amounts,  
it is recommended that a sample is made to confirm accuracy.*