



Featuring Magic Friends by Mia Charro

Hopscotch Quilt

Finished Size: 59" x 67" (1.5m x 1.7m)

Project designed by Kari Nichols - Quilting Renditions

Purchase pattern at quiltingrenditions.com

Technique: Pieced | Skill Level: Advanced Beginner



Hopscotch Quilt

Fabric Requirements

DESIGN	COLOR	ITEM ID	YARDAGE
(A) Butterfly Paradise	Blue	PWMC022.XBLUE	1¼ yards (1.14m)
(B) Happy Friends	Violet	PWMC024.XVIOLET	½ yard (0.46m)
(C) Magic Friends	Panel	PWMC026.XPANEL	1 Panel
(D) Magic Sky	Violet	PWMC027.XVIOLET	½ yard (0.46m)
(E) Rainbows Forever	Yellow	PWMC029.XYELLOW	¼ yard (0.23m)
(F) Sunny Daze	Ivory	PWMC030.XIVORY	¼ yard (0.23m)
(G) Designer Essential Solids	Cornflower	CSFSESS.CORNF*	1⅝ yards (1.49m)

* includes binding

Backing (Purchased Separately)

44" (1.12m) wide

Happy Friends

Violet

PWMC024.XVIOLET

3⅝ yards (3.32m)

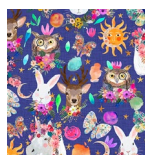
OR

108" (2.74m) wide

2 yards (1.83m)



(A)



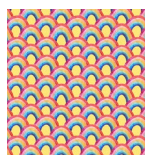
(B)



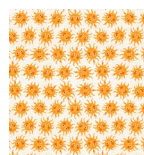
(C)



(D)



(E)



(F)



(G)



Backing
44"

If kitting, refer to the final pattern for yardage amounts, it is recommended that a sample is made to confirm accuracy.