



In The Garden Quilt

Featuring August 2023, Classics and Shot Cottons by Kaffe Fassett Collective

Collection:	August 2023, Classics and Shot Cottons by Kaffe Fassett Collective
Technique:	Pieced
Skill Level:	Advanced Beginner
Finished Sizes:	Finished Size: 74" x 91 ¹ / ₂ " (1.88m x 2.32m) Finished Block Size: 12 ³ / ₈ " x 12 ³ / ₈ " (31.43cm x 31.43cm)

All possible care has been taken to assure the accuracy of this pattern. We are not responsible for printing errors or the manner in which individual work varies. Please read the instructions carefully before starting this project. If kitting, it is recommended a sample is made to confirm accuracy.

In The Garden Quilt

Project designed by Kaffe Fasset | Tech edited by Alison M. Schmidt

Fabric Requirements

DESIGN	COLOR	ITEM ID	YARDAGE
(A) Asian Circles	Turquoise	GP89.TURQUOISE	1 $\frac{1}{8}$ yards (1.03m)
(B) Lake Blossoms	Contrast	PWGP093.CONTRAST	$\frac{1}{2}$ yard (0.46m)
(C) Tropical Water Lilies	Blue	PWPJ119.BLUE	$\frac{5}{8}$ yard (0.57m)
(D) Curly Kale	Dark	PWPJ120.DARK	1 $\frac{5}{8}$ yards (1.49m)
(E) Floating Hibiscus	Blue	PWPJ122.BLUE	$\frac{3}{8}$ yard (0.34m)
(F) Hyacinthus	Blue	PWPJ123.BLUE	$\frac{1}{2}$ yard (0.46m)
(G) Hyacinthus	Dark	PWPJ123.DARK	$\frac{1}{2}$ yard (0.46m)
(H) Rhododendrons	Green	PWPJ124.GREEN	$\frac{7}{8}$ yard (0.80m)
(I) Zebra Lilly	Blue	PWBM091.BLUE	$\frac{3}{4}$ yard (0.69m)
(J) Aboriginal Dot	Plum	GP71.PLUMX	1 $\frac{5}{8}$ yards (1.49m)
(K) Aboriginal Dot	Wisteria	PWGP071.WISTE	1 $\frac{1}{3}$ yards (1.22m)
(L) Wide Stripe	Embers	SSGP001.EMBERS*	$\frac{7}{8}$ yard (0.80m)

* includes binding

Backing (Purchased Separately)

44" (1.12m) wide

Rhododendrons

Magenta

PWPJ124.MAGENTA

5 $\frac{3}{4}$ yards (5.26m)

OR

108" (2.74m) wide

Millefiore

Blue

QBG006.BLUE

2 $\frac{1}{2}$ yards (2.29m)



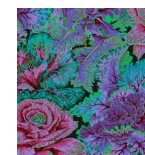
(A)



(B)



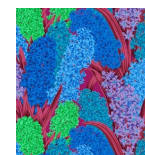
(C)



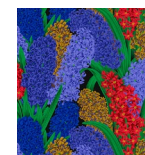
(D)



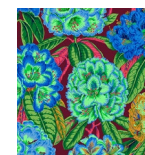
(E)



(F)



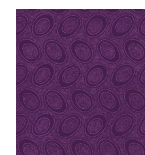
(G)



(H)



(I)



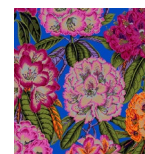
(J)



(K)



(L)



Backing
44"



Backing
108"

Additional Recommendations

- 100% cotton thread in colors to match
- 82" x 100" (2.08m x 2.54m) quilt batting

Cutting

WOF = Width of Fabric

Note: Fabrics B, F, G and H are all directional-print florals. When assembling the quilt top, there are multiple options for how to orient these directional prints.

Fabric A, cut:

Cut (7) $4\frac{5}{8}$ " x WOF; subcut
(56) $4\frac{5}{8}$ " squares

Fabrics B, F, and G, cut from each:

Cut (1) $12\frac{7}{8}$ " x WOF; subcut
(2) $12\frac{7}{8}$ " squares

Fabric C, cut:

Cut (1) $12\frac{7}{8}$ " x WOF; subcut
(2) $12\frac{7}{8}$ " squares
Cut (1) $4\frac{5}{8}$ " x WOF; subcut
(8) $4\frac{5}{8}$ " squares

Fabric D, cut:

Cut (2) $18\frac{3}{4}$ " x WOF; subcut
(4) $18\frac{3}{4}$ " squares
Cut (1) $9\frac{5}{8}$ " x WOF; subcut
(2) $9\frac{5}{8}$ " squares

Fabric E, cut:

Cut (2) $4\frac{5}{8}$ " x WOF; subcut
(16) $4\frac{5}{8}$ " squares

Fabric H, cut:

Cut (2) $12\frac{7}{8}$ " x WOF; subcut
(4) $12\frac{7}{8}$ " squares

Fabric I, cut:

Cut (8) $2\frac{1}{2}$ " x WOF for border

Fabric J, cut:

(25) $1\frac{7}{8}$ " x WOF for stripsets

Fabric K, cut:

(20) $1\frac{7}{8}$ " x WOF for stripsets

Fabric L, cut:

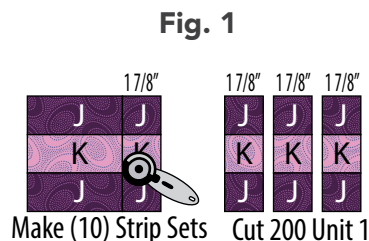
(10) $2\frac{1}{2}$ " x WOF for binding

Instructions

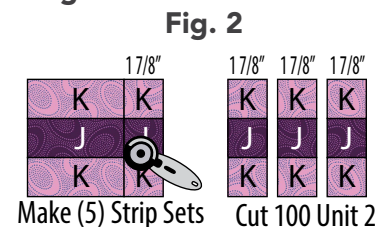
Note: Use a $\frac{1}{4}$ " seam allowance throughout. Sew all pieces with right sides together and raw edges even using matching thread. Press after each seam.

Block Construction

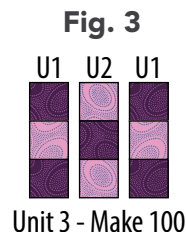
1. Stitch a **Fabric K** $1\frac{7}{8}$ " x WOF strip lengthwise between 2 **Fabric J** $1\frac{7}{8}$ " x WOF strips. Measure to make sure the stripset is $4\frac{5}{8}$ " high, including seam allowances. Press towards the darker fabric. Make a total of 10 strip sets. From these, cut (200) $1\frac{7}{8}$ " wide Unit 1. **Fig. 1**



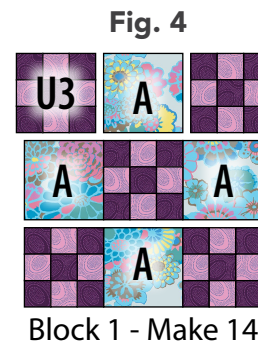
2. Sew a **Fabric J** $1\frac{7}{8}$ " x WOF strip lengthwise between 2 **Fabric K** $1\frac{7}{8}$ " x WOF strips. Press towards the darker fabric. Make a total of 5 strip sets. From these, cut (100) $1\frac{7}{8}$ " wide Unit 2. **Fig. 2**



3. Stitch a Unit 2 between 2 of Unit 1. Make a total of 100 Unit 3 ($4\frac{5}{8}$ " square unfinished). **Fig. 3**

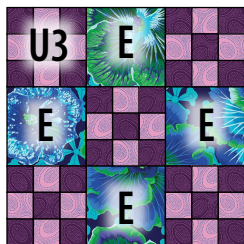


4. Arrange 5 Unit 3 and 4 **Fabric A** $4\frac{5}{8}$ " squares in 3 rows as shown. Stitch into rows, pressing towards **Fabric A** so seams will nest. Sew rows together. Make a total of 14 of Block 1 ($12\frac{7}{8}$ " square unfinished). **Fig. 4**

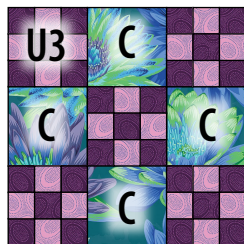


5. In the same manner, make 4 of Block 2 and 2 of Block 3 each with 5 Unit 3 and the $4\frac{5}{8}$ " squares in the fabrics indicated. **Fig. 5**

Fig. 5



Block 2 - Make 4



Block 3 - Make 2

Quilt Top Assembly

6. Cut a **Fabric D** $9\frac{5}{8}$ " square in half diagonally from corner to corner, then cut the second **Fabric D** $9\frac{5}{8}$ " square in half in the opposite direction to yield 4 corner setting triangles. **Fig. 6**

Fig. 6



7. Cut each **Fabric D** $18\frac{3}{4}$ " square in half diagonally twice to yield 16 side setting triangles – there will be 2 extra. **Fig. 7**

Fig. 7



8. Noting the **Quilt Layout** diagram (page 5), arrange blocks, $12\frac{3}{8}$ " squares, and **Fabric D** $9\frac{5}{8}$ " and $18\frac{3}{4}$ " triangles into 10 diagonal rows as shown. If desired, place all the directional-print large squares so all are right-reading from the lower left side when arranged on point (as shown in the virtual image). Other possibilities are to orient them right-reading around the center, orient them randomly, or simply place each large square as you desire for an overall pleasing balance of color and pattern.
9. Sew into diagonal rows, pressing seam allowances in each row away from the block. Stitch rows together, nesting seam allowances to complete the quilt center ($70\frac{1}{2}$ " x 88" unfinished).
10. Sew all the **Fabric I** strips together end to end.

11. Measure the quilt top vertically through the center and cut 2 side borders strips to fit (88" long). Sew the border strips to the left and right sides of the quilt.

12. Repeat step 11 to measure horizontally, cut, and add top and bottom border strips to fit ($74\frac{1}{2}$ " long).

Finishing

13. Sew together the $2\frac{1}{2}$ " **Fabric L** binding strips end-to-end using diagonal seams. Press seams open. Press the binding strip in half wrong sides together.
14. Layer backing (wrong side up), batting, and quilt top (right side up). Baste the layers together and quilt as desired. Trim excess batting and backing even with the top after quilting is completed.
15. Leaving an 8" tail of binding, sew the binding to the top of the quilt through all layers matching all raw edges. Miter corners. Stop approximately 12" from where you started. Lay both loose ends of binding flat along quilt edge. Where the loose ends meet, fold them back on themselves and press to form a crease. Using this crease as your stitching line, sew the two open ends of the binding right sides together. Trim seam to $\frac{1}{4}$ " and press open. Finish sewing binding to quilt.
16. Turn the binding to the back of quilt and hand-stitch in place.

Quilt Layout

