



Featuring Bloomology by Monika Forsberg for Conservatory Craft

## Just Smashing Quilt

Finished Size: 60" x 75" (1.52m x 1.91m)

Project designed by Marcea Owen - Cotton Street Commons

Purchase pattern at [cottonstreetcommons.com](http://cottonstreetcommons.com)

Technique: Pieced | Skill Level: Advanced Beginner



# Just Smashing Quilt

## Fabric Requirements

DESIGN	COLOR	ITEM ID	YARDAGE
(A) Mosaic	Primary	PWMF032.PRIMARY	⅓ yard (0.30m)
(B) Mosaic	Secondary	PWMF032.SECONDARY	⅓ yard (0.30m)
(C) Breeze	Guava	PWMF033.GUAVA	⅓ yard (0.30m)
(D) Spangled	Groovy	PWMF034.GROOVY	⅓ yard (0.30m)
(E) Dizzy	Grass	PWMF036.GRASS	⅓ yard (0.30m)
(F) Dizzy	Plum	PWMF036.PLUM	⅓ yard (0.30m)
(G) Cameo	Maize	PWMF037.MAIZE	⅓ yard (0.30m)
(H) Cameo	Maple	PWMF037.MAPLE	⅓ yard (0.30m)
(I) Hydrangeas	Magenta	PWMF038.MAGENTA	⅜ yard (0.34m)
(J) Designer Essential Solid	Glitter	CSFSESS.GLITTER	⅝ yard (0.57m)
(K) Designer Essential Solid	Glacier	CSFSESS.GLACI	⅝ yard (0.57m)
(L) Designer Essential Solid	Giggles	CSFSESS.GIGGLES	⅝ yard (0.57m)
(M) Designer Essential Solid	Winter White	CSFSESS.WINTE	⅝ yard (0.57m)
(N) Designer Essential Solid	Grass	CSFSESS.GRASS*	1 yard (0.91m)
(O) Designer Essential Solid	Matcha	CSFSESS.MATCHA	1⅓ yards (1.03m)

\* includes binding

## Backing (Purchased Separately)

**44" (1.12m) wide**

Headdress

Navy

PWMF035.NAVY

4½ yards (4.11m)

**OR**

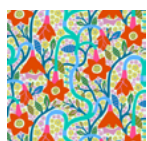
**108" (2.74m) wide**

Delphinium

Jewel

QBAH004.JEWEL

2½ yards (2.29m)



(A)



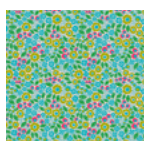
(B)



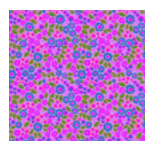
(C)



(D)



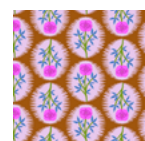
(E)



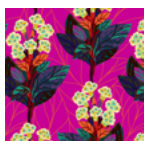
(F)



(G)



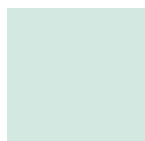
(H)



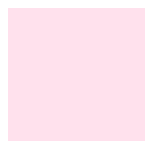
(I)



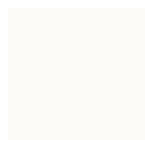
(J)



(K)



(L)



(M)



(N)



(O)



Backing  
44"



Backing  
108"

*If kitting, refer to the final pattern for yardage amounts,  
it is recommended that a sample is made to confirm accuracy.*