

Featuring Kaffe Collective August 2025 Ship

Star Storm Quilt

Finished Size: 80" x 80" (2.03m x 2.03m)

Project designed by Victoria Findlay Wolfe, Re-colored by FreeSpirit Fabrics

Purchase pattern at vfwquilts.com

Technique: Pieced | Skill Level: Advanced Beginner

freespiritfabrics.com



Star Storm Quilt

Fabric Requirements

DESIGN	COLOR	ITEM ID	YARDAGE
(A) Minnows	Red	PWBM100.RED	¼ yard (0.23m)
(B) Zipper Stripe	Zebra	PWBM103.ZEBRA	¼ yard (0.23m)
(C) Minnows	Lime	PWBM100.LIME	¾ yard (0.69m)
(D) Twist	Blue	PWBM102.BLUE	¾ yard (0.69m)
(E) Paperweight	Aqua	PWGP020.AQUA	1⅜ yards (1.26m)
(F) Tibetan Peony	Warm	PWPJ136.WARM	¾ yard (0.69m)
(G) Slice	Purple	PWBM101.PURPLE	¾ yard (0.69m)
(H) Twist	Black	PWBM102.BLACK	1½ yards (1.37m)
(I) Alpines	Pastel	PWPJ131.PASTEL	¾ yard (0.69m)
(J) Bold Leaves	Brown	PWPJ132.BROWN	¾ yard (0.69m)
(K) Roman Glass	Turquoise	PWGP001.TURQUOISE	1 yard (0.91m)
(L) Rosemary	Green	PWPJ134.GREEN	½ yard (0.46m)
(M) Picotee Carnations	Green	PWPJ133.GREEN	½ yard (0.46m)
(N) Tibetan Peony	Dark	PWPJ136.DARK	½ yard (0.46m)
(O) Spider Mums	Dark	PWPJ135.DARK	½ yard (0.46m)
(P) Lake Blossoms	Turquoise	PWGP093.TURQUOISE	¼ yard (0.23m)
(Q) Spider Mums	Red	PWPJ135.RED	¼ yard (0.23m)
(R) Roman Glass*	Violet	PWGP001.VIOLET*	¾ yard (0.69m)

* includes binding

Backing (Purchased Separately)

44" (1.12m) wide

Bold Leaves

Pink

PWPJ132.PINK

5 yards (4.57m)

OR

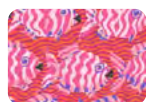
108" (2.74m) wide

Paperweight

Purple

QBG011.PURPLE

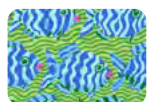
2½ yard (2.29m)



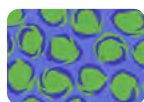
(A)



(B)



(C)



(D)



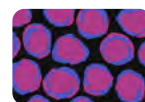
(E)



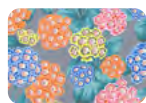
(F)



(G)



(H)



(I)



(J)



(K)



(L)



(M)



(N)



(O)



(P)



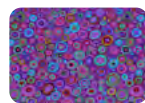
(Q)



(R)



Backing
44"



Backing
108"

*If kitting, refer to the final pattern for yardage amounts,
it is recommended that a sample is made to confirm accuracy.*