

Featuring New Shot Cottons and Shot Cotton Stripes by Kaffe Fassett

Even-Steven Quilt - Stripes

Finished Size: 60" x 72" (1.52m x 1.83m)

Project designed by Erica Jackman - Kitchen Table Quilting

Purchase pattern at kitchentablequilting.com

Technique: Pieced

Skill Level: Advanced Beginner



Even-Steven Quilt - Stripes

Fabric Requirements

DESIGN	COLOR	ITEM ID	YARDAGE
(A) Shot Cotton	Moss	SCGP139.MOSS	1¾ yards (1.60m)
(B) Caterpillar Stripe	Sprout	WSGP001.SPROUT	FQ (45.72cm x 53.34cm)
(C) Caterpillar Stripe	Sunshine	WSGP001.SUNSHINE	FQ (45.72cm x 53.34cm)
(D) Caterpillar Stripe	Earth	WSGP001.EARTH	FQ (45.72cm x 53.34cm)
(E) Caterpillar Stripe	Dark	WSGP001.DARK	FQ (45.72cm x 53.34cm)
(F) Caterpillar Stripe	Twilight	WSGP001.TWILIGHT	FQ (45.72cm x 53.34cm)
(G) Caterpillar Stripe	Aqua	WSGP001.AQUA*	¾ yard (0.69m)
(H) Narrow Stripe	Wine	WSGP002.WINE	FQ (45.72cm x 53.34cm)
(I) Narrow Stripe	Sunset	WSGP002.SUNSET	FQ (45.72cm x 53.34cm)
(J) Narrow Stripe	Multi	WSGP002.MULTI	FQ (45.72cm x 53.34cm)
(K) Narrow Stripe	Blue	WSGP002.BLUE	FQ (45.72cm x 53.34cm)
(L) Narrow Stripe	Dark	WSGP002.DARK	FQ (45.72cm x 53.34cm)
(M) Broad Stripe	Red	WSGP003.RED	FQ (45.72cm x 53.34cm)
(N) Broad Stripe	Multi	WSGP003.MULTI	FQ (45.72cm x 53.34cm)
(O) Broad Stripe	Azure	WSGP003.AZURE	FQ (45.72cm x 53.34cm)
(P) Broad Stripe	Blue	WSGP003.BLUE	FQ (45.72cm x 53.34cm)
(Q) Broad Stripe	Gold	WSGP003.GOLD	FQ (45.72cm x 53.34cm)
(R) Broad Stripe	Dusky	WSGP003.DUSKY	FQ (45.72cm x 53.34cm)
(S) Exotic Stripe	Desert	WSGP004.DESERT	FQ (45.72cm x 53.34cm)
(T) Exotic Stripe	Khaki	WSGP004.KHAKI	FQ (45.72cm x 53.34cm)
(U) Exotic Stripe	Teal	WSGP004.TEAL	FQ (45.72cm x 53.34cm)

* includes binding

Backing (Purchased Separately)

44" (1.12m) wide

Big Blooms Emerald PWGP091.EMERA 4 yards (3.66m)

OR

108" (2.74m) wide

Millefiore Jade QBGP006.JADE 2 yards (1.83m)

Fabric Swatches on next page...

If kitting, refer to the final pattern for yardage amounts, it is recommended that a sample is made to confirm accuracy.



Even-Steven Quilt - Stripes

Fabric Swatches



(A)



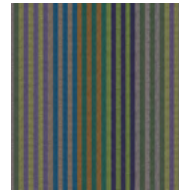
(B)



(C)



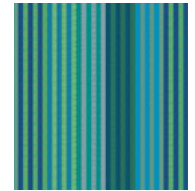
(D)



(E)



(F)



(G)



(H)



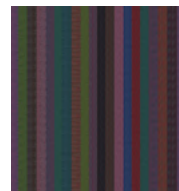
(I)



(J)



(K)



(L)



(M)



(N)



(O)



(P)



(Q)



(R)



(S)



(T)



(U)



Backing
44"



Backing
108"