

# Handkerchief Corners Quilt

Featuring Shot Cotton & Shot Cotton Stripes  
by Kaffe Fassett

<b>Collection:</b>	Shot Cotton & Shot Cotton Stripes by Kaffe Fassett
<b>Technique:</b>	Traditional Piecing, Y-Seams
<b>Skill Level:</b>	Intermediate
<b>Finished Size:</b>	<b>Finished Size of Project:</b> 84 <sup>3</sup> / <sub>4</sub> " x 84 <sup>3</sup> / <sub>4</sub> " (2.15m x 2.15m) <b>Finished Block Size:</b> 3 <sup>1</sup> / <sub>2</sub> " x 3 <sup>1</sup> / <sub>2</sub> " (8.89cm x 8.89cm) and 6" x 6" (15.25cm x 15.24cm)

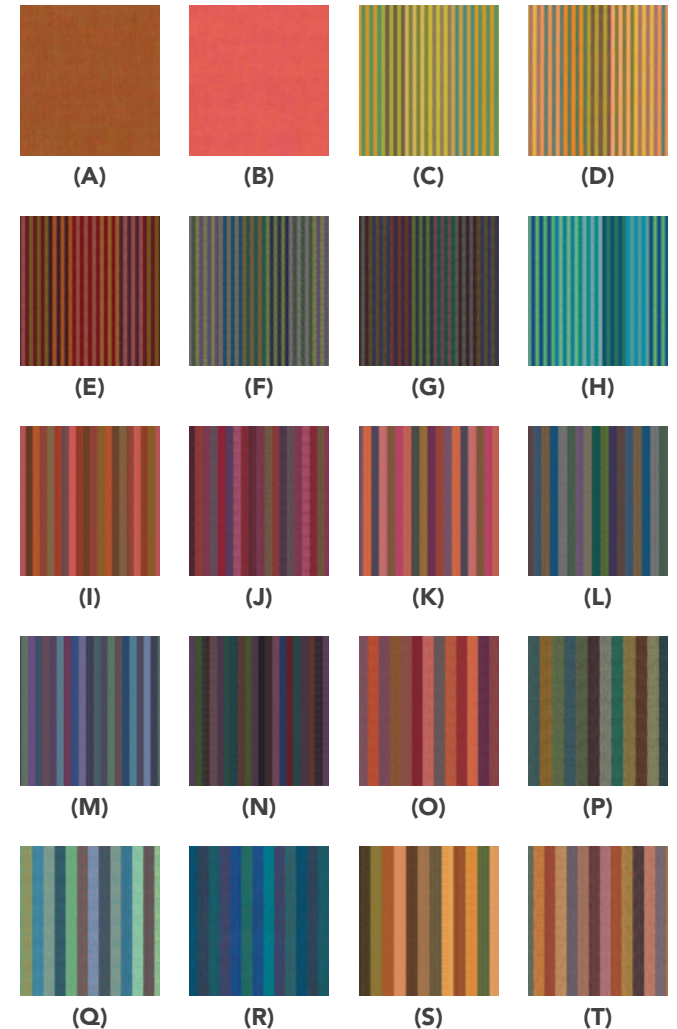
*All possible care has been taken to ensure the accuracy of this pattern. We are not responsible for printing errors or the manner in which individual work varies. Please read the instructions carefully before starting this project.*

# Handkerchief Corners Quilt

Project designed by Kaffe Fassett | Tech edited by Julie A Kentner

## FABRIC REQUIREMENTS

DESIGN	COLOR	ITEM ID	YARDAGE
(A) Shot Cotton	Paprika	SCGP101.PAPRIKA	¾ yard (0.69m)
(B) Shot Cotton	Camelia	SCGP109.CAMELIA	1 yard (0.91m)
(C) Caterpillar Stripe	SPROUT	WSGP001.SPROUT	1 yard (0.91m)
(D) Caterpillar Stripe	SUNSHINE	WSGP001.SUNSHINE	1 yard (0.91m)
(E) Caterpillar Stripe	EARTH	WSGP001.EARTH	1 yard (0.91m)
(F) Caterpillar Stripe	DARK	WSGP001.DARK	1 yard (0.91m)
(G) Caterpillar Stripe	TWILIGHT	WSGP001.TWILIGHT	1 yard (0.91m)
(H) Caterpillar Stripe	AQUA	WSGP001.AQUA	1 yard (0.91m)
(I) Narrow Stripe	TOMATO	WSGP002.TOMATO	1 yard (0.91m)
(J) Narrow Stripe	WINE	WSGP002.WINE	1 yard (0.91m)
(K) Narrow Stripe	SUNSET	WSGP002.SUNSET	1 yard (0.91m)
(L) Narrow Stripe	MULTI	WSGP002.MULTI	1 yard (0.91m)
(M) Narrow Stripe	BLUE	WSGP002.BLUE	1 yard (0.91m)
(N) Narrow Stripe	DARK	WSGP002.DARK	1 yard (0.91m)
(O) Broad Stripe	RED	WSGP003.RED	1 yard (0.91m)
(P) Broad Stripe	MULTI	WSGP003.MULTI	1 yard (0.91m)
(Q) Broad Stripe	AZURE	WSGP003.AZURE	1 yard (0.91m)
(R) Broad Stripe	BLUE	WSGP003.BLUE	1 yard (0.91m)
(S) Broad Stripe	GOLD	WSGP003.GOLD	1 yard (0.91m)
(T) Broad Stripe	DUSKY	WSGP003.DUSKY	1 yard (0.91m)



continued on next page...

# Handkerchief Corners Quilt

## Fabric Requirements (continued...)

DESIGN	COLOR	ITEM ID	YARDAGE
(U) Exotic Stripe	DESERT	WSGP004.DESERT	1 yard (0.91m)
(V) Exotic Stripe	KHAKI	WSGP004.KHAKI	1 yard (0.91m)
(W) Exotic Stripe	TEAL	WSGP004.TEAL	1 yard (0.91m)
(X) Exotic Stripe	DENIM	WSGP004.DENIM*	1½ yards (1.52m)
(Y) Exotic Stripe	MIDNIGHT	WSGP004.MIDNIGHT	1 yard (0.91m)
(Z) Exotic Stripe	WARM	WSGP004.WARM	1 yard (0.91m)

\* includes binding

## Backing (Purchased Separately)

### 44" (1.12m) wide

Cloisonne Contrast PWGP046.CONTRAST 7⅞ yards (7.20m)

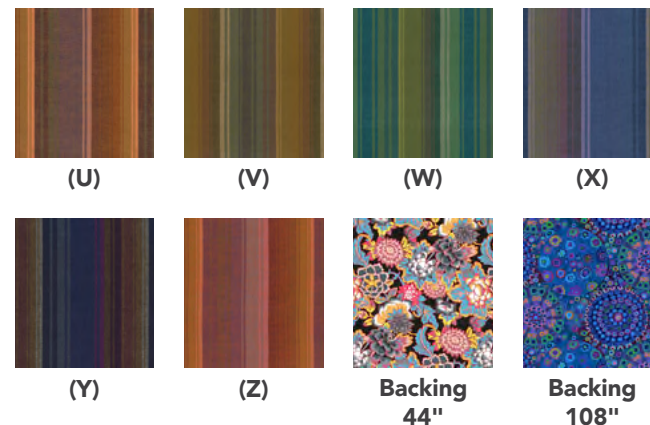
OR

### 108" (2.74m) wide

Millefiore Blue QBGP006.BLUE 2¾ yards (2.51m)

## Additional Recommendations

- 100% cotton thread in colors to match
- 93" x 93" (2.36m x 2.36m) batting
- Template Plastic (optional)



# Handkerchief Corners Quilt

## Cutting

**WOF = Width of Fabric**

### Fabric A, cut:

- (9)  $2\frac{1}{2}$ " x WOF; sub-cut  
(132)  $2\frac{1}{2}$ " squares

### Fabric B, cut:

- (3)  $9\frac{3}{4}$ " x WOF; sub-cut  
(9)  $9\frac{3}{4}$ " squares [cut in half diagonally twice for a total of 36 triangles] and (2)  $5\frac{1}{8}$ " squares [cut in half diagonally once for a total of 4 triangles]

### Fabrics C-W, Y, and Z, cut:

- (2)  $14\frac{1}{2}$ " x WOF; sub-cut  
(17)  $2\frac{1}{2}$ " x  $14\frac{1}{2}$ " strips and (9)  $2\frac{1}{2}$ " x 10" strips

**NOTE:** Cut all strips so the stripes run the length of the strip.

### Fabric X, cut:

- (2)  $14\frac{1}{2}$ " x WOF; sub-cut  
(17)  $2\frac{1}{2}$ " x  $14\frac{1}{2}$ " strips  
(9)  $2\frac{1}{2}$ " x 10" strips

**NOTE:** Cut all strips so the stripes run the length of the strip, except binding.

- (9)  $2\frac{1}{2}$ " x WOF (binding)

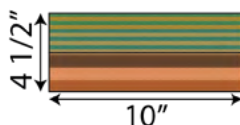
## Instructions

**Note:** Use a  $\frac{1}{4}$ " seam allowance throughout. Sew all pieces with right sides together and raw edges even using matching or neutral thread. Press seams open throughout.

### Small Block Assembly

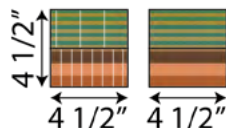
1. Select 2 different **Fabric C-Z**  $2\frac{1}{2}$ " x 10" strips. Sew together lengthwise. Press seam allowance open.

Fig. 1



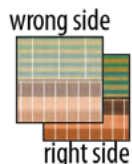
2. From this strip, cut (2)  $4\frac{1}{2}$ " squares.

Fig. 2



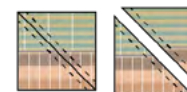
3. Arrange the (2)  $4\frac{1}{2}$ " squares right sides together as shown in **Figure 3**, matching stripes top and bottom.

Fig. 3



4. Draw a diagonal line across the wrong side of the top square, corner to corner. Stitch as shown in **Figure 4**,  $\frac{1}{4}$ " on both sides of the marked line. Cut along the marked line.

Fig. 4



5. Press seam allowances open on each Small Block. Trim 'dog ears' and square Small Blocks to 4" as needed.

Fig. 5



Small Block

Make a total of 144

6. Repeat Steps 1-5 (72) times to create 144 Small Blocks.

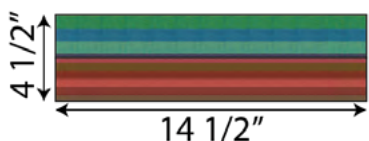
# Handkerchief Corners Quilt

## Large Block Assembly:

The trapezoid template included in this pattern (page 9) is used to create the Large Blocks. If using template plastic, trace and label the trapezoid, then cut out on the lines.

7. Select 2 different **Fabric C-Z** 2½" x 14½" strips. Sew together lengthwise. Press seam allowance open.

Fig. 6



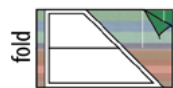
8. Fold strip in half as shown in **Figure 7**, lining up the top and bottom edges as well as the center seam.

Fig. 7

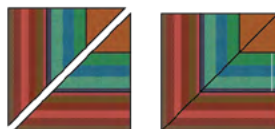
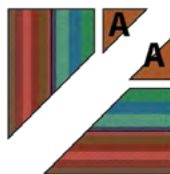


9. Place Trapezoid Template on the folded strip as shown. Cut along the left edge (removing fold) and right diagonal edge of template. Do not separate fabrics. Pin layers together so they don't shift.

Fig. 8

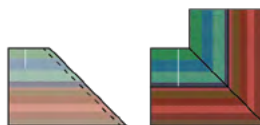


**Note:** If using the alternate instructions to make this a beginner level project, separate the trapezoids and stitch, using a ¼" seam allowance, a HST to each blunt end. Press seams open, then stitch the two halves together. Press seam open. Repeat for a total of 132 blocks.



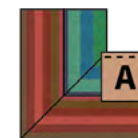
10. Starting ¼" down from the top, stitch a ¼" seam along the diagonal edge. Press seam allowance open.

Fig. 9



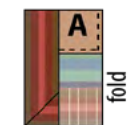
11. Rotate block as shown in **Figure 10**. With right sides together, align a **Fabric A** 2½" square even with short edge of the bottom trapezoid as shown. Stitch a ¼" seam from right edge to the seam between the trapezoids, backstitch at seam. Press seam allowance open.

Fig. 10



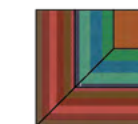
12. Fold the piece in half as shown in **Figure 11**, aligning the adjoining edge of the **Fabric A** 2½" square with short edge of the other trapezoid. Backstitch at seam and stitch a ¼" seam from top edge to seam between the trapezoids.

Fig. 11



13. Press seam allowance open. Press block flat.

Fig. 12



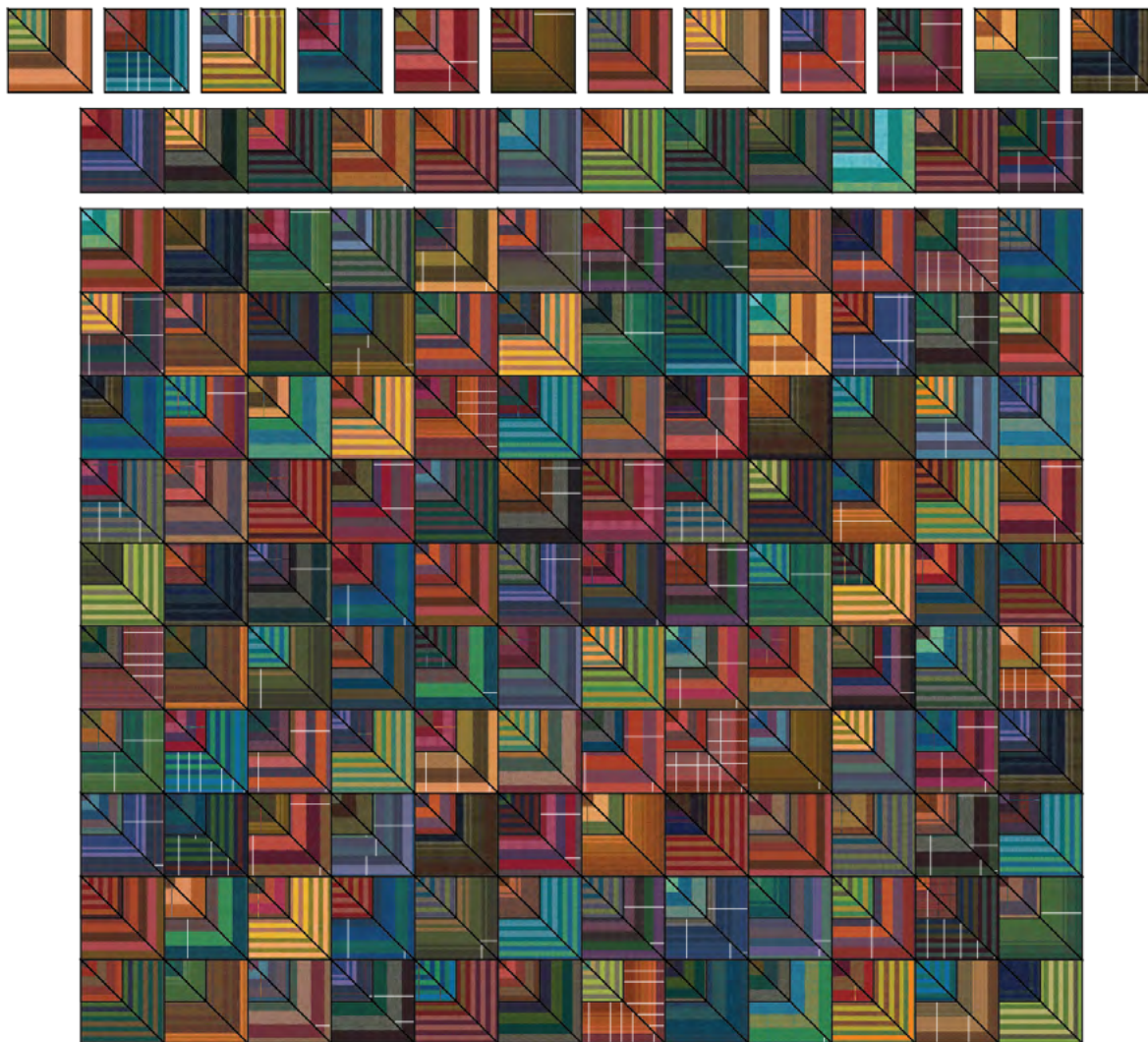
Large Block  
Make a total of 132

14. Repeat Steps 7-13 (132) times to create 132 Large Blocks (6½" unfinished).

## Quilt Top Assembly

15. Arrange Small Blocks into 12 rows of 12 blocks each as shown in **Figure 13**. Stitch into rows, pressing seams open. Sew rows together, pressing seams down. Quilt center measures 42½" x 42½" (unfinished).
16. Using the **Quilt Layout** diagram (page 8) as a guide, arrange Large Blocks, **Fabric B** 5⅛" Corner Setting Triangles, and **Fabric B** 9¾" Edge Setting Triangles into (7) diagonal rows on upper right and lower left corners of quilt center. Sew the blocks and setting triangles into diagonal rows, pressing seams open. Sew rows together and press rows down. Sew to quilt center.
17. Arrange Large Blocks, **Fabric B** 5⅛" Corner Setting Triangles, and **Fabric B** 9¾" Edge Setting Triangles into (7) diagonal rows on upper left and bottom right corners of quilt center. Sew the blocks and setting triangles into diagonal rows, pressing seams open. Sew rows together and press rows down. Sew to quilt center to complete the quilt top.

Fig. 13





# Handkerchief Corners Quilt

## Finishing

**18.** Sew together the (9) 2½" **Fabric X** binding strips end-to-end using diagonal seams. Press seams open. Press the binding strip in half, wrong sides together. Set aside until the quilt is ready for binding.

**19.** Now that the quilt top is complete it is ready for quilting! Quilts can be sent out for longarm quilting or you can quilt it yourself. If sending the quilt out, it is important to discuss backing and batting requirements with the quilter to ensure they have everything needed to properly finish the quilt.

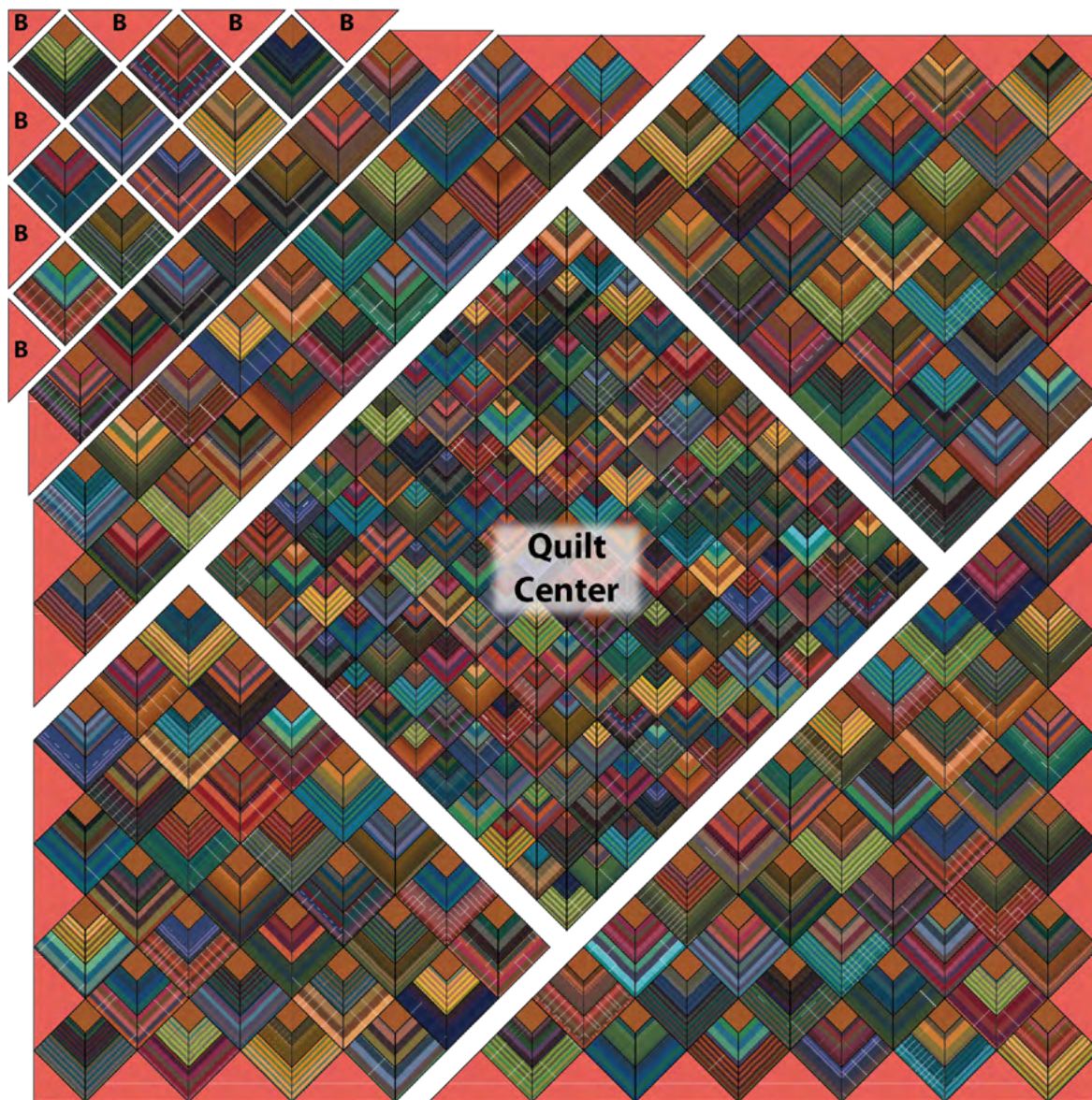
If quilting yourself and using 44" fabric for backing, choose your favorite method for piecing (taking time to remove selvages), then layer, baste and quilt. Once finished, trim excess batting and backing and bind according to your favorite method.

**To complete binding by hand, it must first be machine sewn to the quilt top using the following steps:**

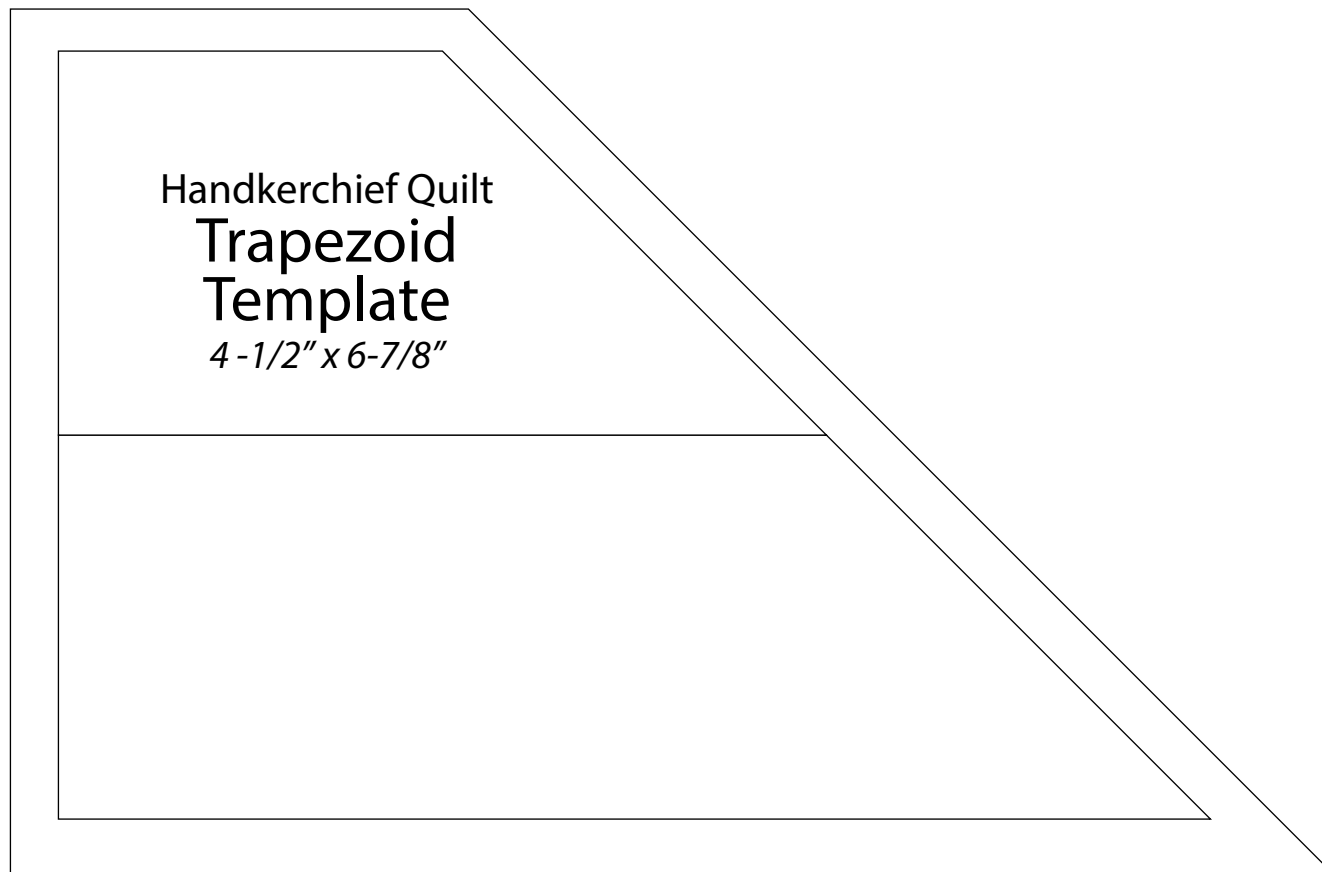
- Leaving an 8" tail of binding, sew binding to top of quilt through all layers, matching raw edges. Miter corners. Stop approximately 12" from where you started. Lay both loose ends of binding flat along quilt edge. Where the two loose ends meet, fold each side back on themselves and press to form a crease. Using this crease as your stitching line, sew the two open ends of the binding together right sides together. Trim seam to ¼" and press seam open. The binding will naturally fold, wrong sides together, and lay along the quilt edge. Finish sewing binding to quilt. Turn and press the binding to the back of the quilt and hand stitch in place.
- If machine binding, complete the steps above only attach the binding to the **BACK** of the quilt, turn and press binding to the front of the quilt and machine stitch in place.

# Handkerchief Corners Quilt

## Quilt Layout







This square should  
measure 1" x 1"  
(2.54cm x 2.54cm)  
when printed.

**\*\*\* Measure templates before cutting to confirm printing at 100%\*\*\***