



Featuring Paradise Blooms by Kirsten Katz

Calypso Quilt

Finished Size: 48" x 60" (1.22m x 1.52m)

Project designed by Carl Hentsch / 3 Dog Design Company

Purchase pattern at paperpieces.com

Technique: Pieced | Skill Level: Advanced Beginner

Fabric Requirements

DESIGN	COLOR	ITEM ID	YARDAGE
(A) Playful Proteas	Apricot	PWKI001.APRICOT	5/8 yard (0.57m)
(B) Flourishing Flora	Ruby	PWKI002.RUBY	1/2 yard (0.46m)
(C) Wild Blooms	Silver	PWKI003.SILVER	3/8 yard (0.34m)
(D) Garden Trellis	Navy	PWKI005.NAVY	5/8 yard (0.57m)
(E) Banksia Trail	Fern	PWKI007.FERN	5/8 yard (0.57m)
(F) Waratah Grandeur	Slate	PWKI010.SLATE	5/8 yard (0.57m)
(G) Waratahs	Emerald	PWKI011.EMERALD	5/8 yard (0.57m)
(H) Sun Blossoms	Copper	PWKI012.COPPER	1/2 yard (0.46m)
(I) Wandering Wildflowers	Cherry	PWKI014.CHERRY	3/8 yard (0.34m)
(J) Petite Petals	Olive	PWKI016.OLIVE*	1/2 yard (0.46m)
(K) Designer Solids	Mist	CSFSESS.MISTX	2 3/8 yards (2.17m)

* includes binding

Backing (Purchased Separately)

44" (1.12m) wide

Cascading Proteas

Tangerine

PWKI008.TANGERINE

3 yards (2.74m)

OR

108" (2.74m) wide

1 1/2 yards (1.37m)



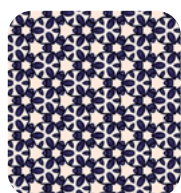
(A)



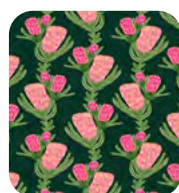
(B)



(C)



(D)



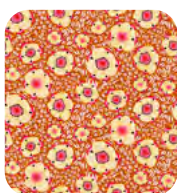
(E)



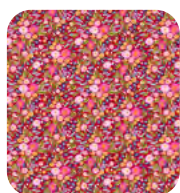
(F)



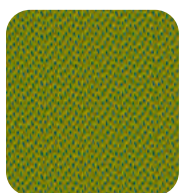
(G)



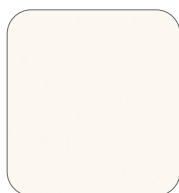
(H)



(I)



(J)



(K)



Backing
44"

*If kitting, refer to the final pattern for yardage amounts,
it is recommended that a sample is made to confirm accuracy.*