



Featuring Paradise Blooms by Kirsten Katz

Paradise Pathway Quilt

Finished Size: 56" x 56" (1.42m x 1.42m)

Project designed by Robin Long-Robin Ruth Design

Purchase pattern at robinruthdesign.com

Technique: Strip Pieced Mariner's Compass Blocks-Required Tool-Fat Robin 16 Point Book/Ruler Combo

Skill Level: Intermediate

Fabric Requirements

DESIGN	COLOR	ITEM ID	YARDAGE
(A) Playful Proteas	Apricot	PWKI001.APRICOT	⅓ yard (0.30m)
(B) Flourishing Flora	Ruby	PWKI002.RUBY	⅞ yard (0.80m)
(C) Wild Blooms	Silver	PWKI003.SILVER	⅓ yard (0.30m)
(D) Rococo Garden	Blush	PWKI004.BLUSH	1¼ yards (1.14m)
(E) Garden Trellis	Navy	PWKI005.NAVY*	½ yard (0.46m)
(F) Enchanted Paradise	Indigo	PWKI006.INDIGO	⅓ yard (0.30m)
(G) Banksia Trail	Fern	PWKI007.FERN	⅓ yard (0.30m)
(H) Cascading Proteas	Tangerine	PWKI008.TANGERINE	⅞ yard (0.80m)
(I) Sugarbush Splendor	Garnet	PWKI009.GARNET	⅓ yard (0.30m)
(J) Waratah Grandeur	Slate	PWKI010.SLATE	½ yard (0.46m)
(K) Sun Blossoms	Copper	PWKI012.COPPER	⅓ yard (0.30m)
(L) Diamond Opulence	Pink	PWKI013.PINK	⅓ yard (0.30m)
(M) Wandering Wildflowers	Cherry	PWKI014.CHERRY	⅓ yard (0.30m)
(N) Mini Wildflowers	Blueberry	PWKI015.BLUEBERRY	⅔ yard (0.61m)
(O) Petite Petals	Olive	PWKI016.OLIVE	⅞ yard (0.80m)

* includes binding

Backing (Purchased Separately)

44" (1.12m) wide

Playful Proteas

Apricot

PWKI001.APRICOT

3½ yards (3.20m)

OR

108" (2.74m) wide

2 yards (1.83m)



(A)



(B)



(C)



(D)



(E)



(F)



(G)



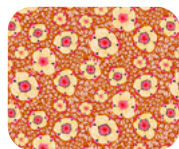
(H)



(I)



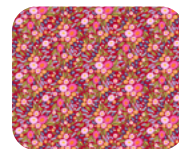
(J)



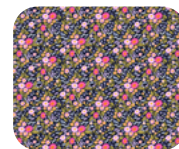
(K)



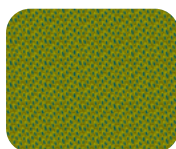
(L)



(M)



(N)



(O)



**Backing
44"**

*If kitting, refer to the final pattern for yardage amounts,
it is recommended that a sample is made to confirm accuracy.*