



Featuring Paradise Blooms by Kirsten Katz

Stella Bella Quilt

Finished Size: 80" x 91" (2.03m x 2.31m)

Project designed by Lisa Alley-Bear Hug Quiltworks

Purchase pattern at bearhugquiltworks.com

Technique: Pieced | Skill Level: Advanced Beginner

Fabric Requirements

DESIGN	COLOR	ITEM ID	YARDAGE
(A) Playful Proteas	Apricot	PWKI001.APRICOT	½ yard (0.46m)
(B) Flourishing Flora	Ruby	PWKI002.RUBY	½ yard (0.46m)
(C) Wild Blooms	Silver	PWKI003.SILVER	½ yard (0.46m)
(D) Rococo Garden	Blush	PWKI004.BLUSH	½ yard (0.46m)
(E) Garden Trellis	Navy	PWKI005.NAVY	⅞ yard (0.80m)
(F) Enchanted Paradise	Indigo	PWKI006.INDIGO	½ yard (0.46m)
(G) Banksia Trail	Fern	PWKI007.FERN	½ yard (0.46m)
(H) Cascading Proteas	Tangerine	PWKI008.TANGERINE	½ yard (0.46m)
(I) Sugarbush Splendor	Garnet	PWKI009.GARNET	½ yard (0.46m)
(J) Waratah Grandeur	Slate	PWKI010.SLATE	1⅝ yards (1.49m)
(K) Sun Blossoms	Copper	PWKI012.COPPER	½ yard (0.46m)
(L) Diamond Opulence	Pink	PWKI013.PINK	½ yard (0.46m)
(M) Wandering Wildflowers	Cherry	PWKI014.CHERRY	½ yard (0.46m)
(N) Mini Wildflowers	Blueberry	PWKI015.BLUEBERRY	½ yard (0.46m)
(O) Petite Petals	Olive	PWKI016.OLIVE*	¾ yard (0.69m)
(P) Designer Essential Solids	Twinkle	CSFSESS.TWINKLE	2⅝ yards (2.17m)

* includes binding

Backing (Purchased Separately)

44" (1.12m) wide

Playful Proteas Apricot PWKI001.APRICOT 5½ yards (5.03m)



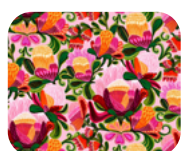
(A)



(B)



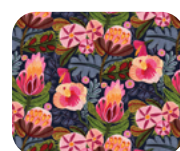
(C)



(D)



(E)



(F)



(G)



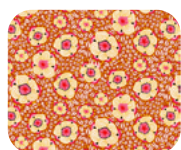
(H)



(I)



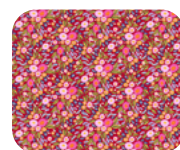
(J)



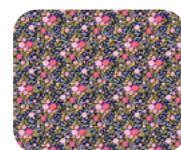
(K)



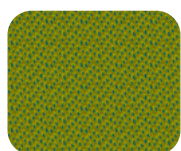
(L)



(M)



(N)



(O)



(P)



Backing
44"

*If kitting, refer to the final pattern for yardage amounts,
it is recommended that a sample is made to confirm accuracy.*