

Free Spirit 



Featuring Good Gracious by Anna Maria

Knitted Star Quilt

Finished Size: 62" x 62" (1.57m x 1.57m)

Project designed by Brittany Lloyd - Lo and Behold Stitchery

Purchase pattern at loandbeholdstitchery.com

Technique: Pieced | Skill Level: Advanced Beginner

Fabric Requirements

DESIGN	COLOR	ITEM ID	YARDAGE
(A) Fair Isle	Sky	PWAH219.SKY	FQ (45.72cm x 53.34cm)
(B) Fair Isle	Sun	PWAH219.SUN	FQ (45.72cm x 53.34cm)
(C) Silverweed	Coral	PWAH222.CORAL*	½ yard (0.46m)
(D) Fair Isle Small	Blueberry	PWAH226.BLUEBERRY	FQ (45.72cm x 53.34cm)
(E) Fair Isle Small	Cranberry	PWAH226.CRANBERRY	FQ (45.72cm x 53.34cm)
(F) Shot Cotton	Dawn	SCGP121.DAWN	FQ (45.72cm x 53.34cm)
(G) Shot Cotton	Strawberry Blonde	SCGP122.STRAWBERRYBLONDE	FQ (45.72cm x 53.34cm)
(H) Shot Cotton	Air Force	SCGP104.AIRFORCE	FQ (45.72cm x 53.34cm)
(I) Shot Cotton	Opal	SCGP114.OPAL	FQ (45.72cm x 53.34cm)
(J) Shot Cotton	Lupin	SCGP113.LUPIN	FQ (45.72cm x 53.34cm)
(K) Shot Cotton	Shadow	SCGP108.SHADOW	2¾ yards (2.51m)

* includes binding

Backing (Purchased Separately)

44" (1.12m) wide

New Forest Shadowed PWAH221.SHADOWED 3¾ yards (3.43m)

OR

108" (2.74m) wide

Town Meeting Carnival QBAH010.CARNIVAL 2 yards (1.83m)



(A)



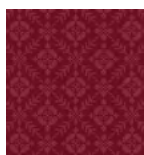
(B)



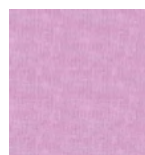
(C)



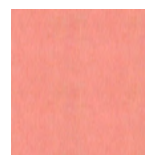
(D)



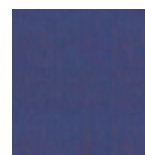
(E)



(F)



(G)



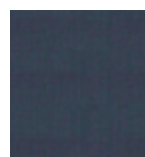
(H)



(I)



(J)



(K)



Backing
44"



Backing
108"

If kitting, refer to the final pattern for yardage amounts, it is recommended that a sample is made to confirm accuracy.