



Lanterns in the Garden Quilt

Featuring Water Garden by Sanderson

Collection:	Water Garden by Sanderson
Technique:	Pieced
Skill Level:	Advanced Beginner
Finished Sizes:	Finished Size:
	60" x 70" (1.52m x 1.78m)
	Finished Block Size:
	10" x 12" (25.40cm x 30.48cm)

All possible care has been taken to assure the accuracy of this pattern. We are not responsible for printing errors or the manner in which individual work varies. Please read the instructions carefully before starting this project. If kitting, it is recommended a sample is made to confirm accuracy.

Project designed by Lucy A. Fazely | Tech edited by Alison M. Schmidt

Fabric Requirements

DESIGN	COLOR	ITEM ID	YARDAGE
(A) Bonsai & Gingko	GREEN	PWSA043.GREEN	$\frac{3}{8}$ yard (0.34m)
(B) Laburnum Falls	BLACK	PWSA044.BLACK	$\frac{3}{8}$ yard (0.34m)
(C) Chinese Lantern	BLUSH	PWSA045.BLUSH	$\frac{3}{8}$ yard (0.34m)
(D) Indienne Peony Trail	BLACK	PWSA047.BLACK	$\frac{3}{8}$ yard (0.34m)
(E) Voyaging Koi	BLUE	PWSA048.BLUE	$\frac{3}{8}$ yard (0.34m)
(F) Bamboo & Bird	MULTI	PWSA049.MULTI	$\frac{3}{8}$ yard (0.34m)
(G) Crane & Frog	IVORY	PWSA050.IVORY	1 yard (0.91m)
(H) Chinoiserie Hall	GREEN	PWSA051.GREEN	$\frac{3}{8}$ yard (0.34m)
(I) LG Crane & Frog	MULTI	PWSA052.MULTI	$\frac{3}{8}$ yard (0.34m)
(J) Emperor Peony	MULTI	PWSA053.MULTI	$\frac{3}{8}$ yard (0.34m)
(K) Fusang Tree	GREEN	PWSA054.GREEN	$\frac{3}{8}$ yard (0.34m)
(L) Poppy	Cream	PWWM029.CREAM	2 $\frac{1}{4}$ yards (2.06m)
(M) Michaelmas Daisy	Ink	PWWM035.INK*	1 $\frac{1}{8}$ yards (1.03m)

* includes binding

Backing (Purchased Separately)

44" (1.12m) wide

LG Crane & Frog Multi PWSA052.MULTI 4 $\frac{1}{2}$ yards (4.11m)

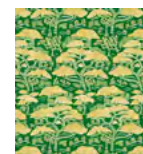
OR

108" (2.74m) wide

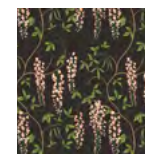
Strawberry Thief Navy QBWM001.NAVY 2 yards (1.83m)

Additional Recommendations

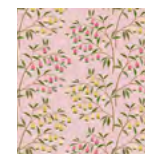
- 100% cotton thread in colors to match
- 68" x 78" (1.73m x 1.98m) batting



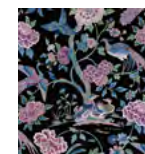
(A)



(B)



(C)



(D)



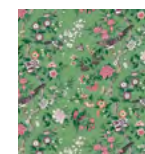
(E)



(F)



(G)



(H)



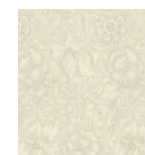
(I)



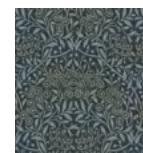
(J)



(K)



(L)



(M)



Backing
44"



Backing
108"

Cutting

WOF = Width of Fabric

Note: Cut fabric from largest to smallest, using leftovers to cut smaller pieces.

Fabrics A-F and H-K, cut:

- (1) $8\frac{1}{2}$ " x WOF; subcut
 - (2) $8\frac{1}{2}$ " squares
- Optional for **Fabric I:**
If desired, fussy cut the squares centered on a crane.

Fabric G, cut:

- (7) $4\frac{1}{2}$ " x WOF for outer border

Fabric L, cut:

- (1) $12\frac{1}{2}$ " x WOF; subcut
 - (3) $10\frac{1}{2}$ " x $12\frac{1}{2}$ "
 Cut remainder into (4) $2\frac{1}{2}$ " strips, then subcut
 - (12) $2\frac{1}{2}$ " squares
- (2) $6\frac{1}{2}$ " x WOF; subcut
 - (4) $6\frac{1}{2}$ " x $10\frac{1}{2}$ " pieces.
 Cut remainder into $2\frac{1}{2}$ " strips, then subcut
 - (50) $2\frac{1}{2}$ " squares
- (2) $2\frac{1}{2}$ " x WOF; subcut
 - (18) $2\frac{1}{2}$ " squares (for a total of 80)
- (27) $1\frac{1}{2}$ " x WOF; subcut
 - (40) $1\frac{1}{2}$ " x $12\frac{1}{2}$ " strips
 - (40) $1\frac{1}{2}$ " x $8\frac{1}{2}$ " strips
 - (80) $1\frac{1}{2}$ " x $3\frac{1}{2}$ " strips

Fabric M, cut:

- (8) $2\frac{1}{2}$ " x WOF for binding
- (6) $1\frac{1}{2}$ " x WOF for inner border
- (3) $1\frac{1}{2}$ " x WOF; subcut
 - (40) $1\frac{1}{2}$ " x $2\frac{1}{2}$ " strips

Instructions:

Note: Use a $\frac{1}{4}$ " seam allowance throughout. Sew all pieces with right sides together and raw edges even using matching thread. Press after each seam.

Block Assembly

1. Draw a diagonal line from corner to corner on the wrong side of all **Fabric L** $2\frac{1}{2}$ " squares. **Fig. 1**

Fig. 1

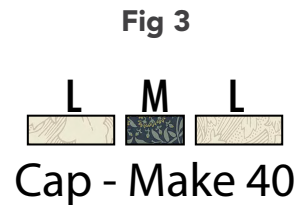


2. Arrange 4 marked **Fabric L** $2\frac{1}{2}$ " squares on corners of a **Fabric A** $8\frac{1}{2}$ " square, with the lines oriented as shown. Stitch along marked lines. Trim seam allowance to $\frac{1}{4}$ ". Press corners out. Repeat on all **Fabrics A-F** and **H-K** $8\frac{1}{2}$ " squares for a total of 20 lantern centers. **Fig. 2**

Fig. 2



3. Stitch a **Fabric M** $1\frac{1}{2}$ " x $2\frac{1}{2}$ " piece between 2 **Fabric L** $1\frac{1}{2}$ " x $3\frac{1}{2}$ " pieces to make a lantern cap. Make a total of 40 lantern caps. **Fig. 3**



4. Sew a lantern cap to top and bottom of a **Fabric A** lantern center, making sure the directional print is oriented correctly. Add a **Fabric L** $1\frac{1}{2}$ " x $8\frac{1}{2}$ " strip to the top and bottom, then stitch **Fabric L** $1\frac{1}{2}$ " x $12\frac{1}{2}$ " strips to right and left side to complete the block. **Fig. 4** Repeat to make a total of 20 blocks ($10\frac{1}{2}$ " x $12\frac{1}{2}$ " unfinished). **Fig. 5**

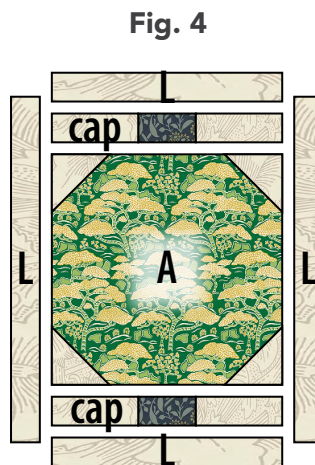
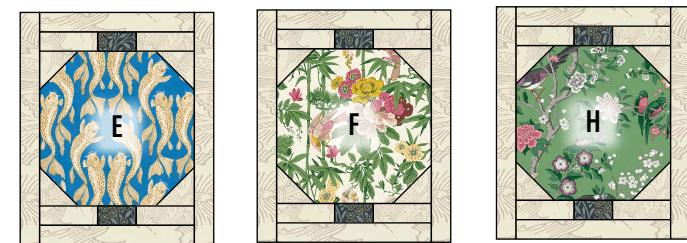
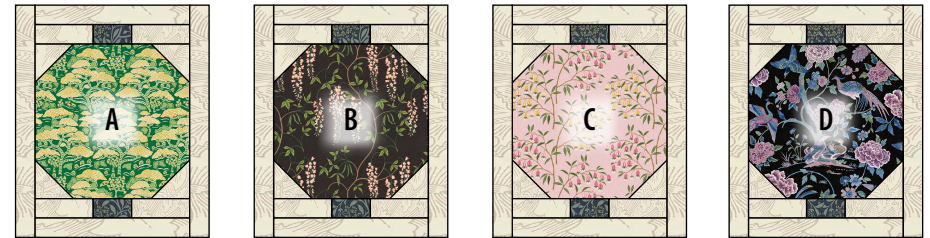


Fig. 5



Make 2 each Block

Quilt Top Assembly

Note: Follow the **Quilt Layout** diagram (page 6) while assembling the quilt. Measure the Quilt Center width and height before cutting and adding borders and adjust border measurements if necessary to match your measurements.

5. Noting the **Quilt Layout** diagram, arrange the blocks and **Fabric L** $10\frac{1}{2}" \times 12\frac{1}{2}"$ and $10\frac{1}{2}" \times 6\frac{1}{2}"$ pieces into 5 columns. Make sure all the lantern blocks are oriented right-reading with regards to the center prints. Sew into columns. Sew columns together. Quilt center measures $50\frac{1}{2}" \times 60\frac{1}{2}"$ (unfinished).
6. Sew all the **Fabric M** $1\frac{1}{2}" \times$ WOF strips together end to end. Cut 2 side borders each $60\frac{1}{2}"$ and 2 top/bottom borders each $52\frac{1}{2}"$ long.
7. Stitch **Fabric M** side borders to right and left sides of quilt center, and press towards **Fabric M**. Repeat to add **Fabric M** top/bottom borders to top and bottom of quilt center.
8. Repeat Steps 6 and 7 to make and add 2 **Fabric G** side borders $62\frac{1}{2}"$ long and 2 **Fabric G** top/bottom borders $60\frac{1}{2}"$ long to the quilt top. Quilt top measures $60\frac{1}{2}" \times 70\frac{1}{2}"$ (unfinished).

Finishing

9. Sew together the $2\frac{1}{2}"$ **Fabric M** binding strips end-to-end using diagonal seams. Press seams open. Press the binding strip in half wrong sides together.
10. Layer backing (wrong side up), batting, and quilt top (right side up). Baste the layers together and quilt as desired. Trim excess batting and backing even with the top after quilting is completed.
11. Leaving an 8" tail of binding, sew the binding to the top of the quilt through all layers matching all raw edges. Miter corners. Stop approximately 12" from where you started. Lay both loose ends of binding flat along quilt edge. Where the loose ends meet, fold them back on themselves and press to form a crease. Using this crease as your stitching line, sew the two open ends of the binding right sides together. Trim seam to $\frac{1}{4}"$ and press open. Finish sewing binding to quilt.
12. Turn the binding to the back of quilt and hand-stitch in place.

Quilt Layout

