

Featuring New Traditional by Lillian August

# Liverpool Lane Quilt

Finished Size: 60" x 72" (1.52m x 1.82m)

Project designed by Marcea Owen - Common Street Commons

Purchase pattern at [cottonstreetcommons.com](http://cottonstreetcommons.com)

Technique: Pieced | Skill Level: Advanced Beginner



# Liverpool Lane Quilt

## Fabric Requirements

DESIGN	COLOR	ITEM ID	YARDAGE
(A) Francine	Periwinkle	PWLA001.PERIWINKLE	FQ (45.72cm x 53.34cm)
(B) Willow	Sage	PWLA002.SAGE	FQ (45.72cm x 53.34cm)
(C) Arabella	Cobalt	PWLA003.COBALT	FQ (45.72cm x 53.34cm)
(D) SM Celeste	White	PWLA004.WHITE	FQ (45.72cm x 53.34cm)
(E) Celeste	Rose	PWLA005.ROSE	FQ (45.72cm x 53.34cm)
(F) Camille	Sage	PWLA006.SAGE	FQ (45.72cm x 53.34cm)
(G) Constance	Juniper	PWLA008.JUNIPER	FQ (45.72cm x 53.34cm)
(H) Violetta	Lavender	PWLA009.LAVENDER	FQ (45.72cm x 53.34cm)
(I) Genieve	Cobalt	PWLA010.COBALT	FQ (45.72cm x 53.34cm)
(J) Brooke	Cobalt	PWLA011.COBALT	FQ (45.72cm x 53.34cm)
(K) Brooke	Lavender	PWLA011.LAVENDER	FQ (45.72cm x 53.34cm)
(L) Brittany	Juniper	PWLA012.JUNIPER	FQ (45.72cm x 53.34cm)
(M) Brittany	Periwinkle	PWLA012.PERIWINKLE*	¾ yard (0.69m)
(N) Kendra	Sage	PWLA013.SAGE	FQ (45.72cm x 53.34cm)
(O) Sofia	Rose	PWLA014.ROSE	FQ (45.72cm x 53.34cm)
(P) Peachy	Mellow	PWSK034.MELLOW	2½ yards (1.94m)

\* includes binding

## Backing (Purchased Separately)

44" (1.12m) wide

Sofia

Rose

PWLA014.ROSE

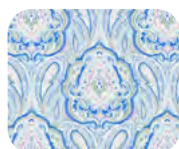
4½ yards (4.11m)



(A)



(B)



(C)



(D)



(E)



(F)



(G)



(H)



(I)



(J)



(K)



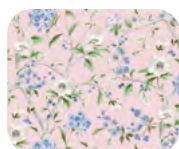
(L)



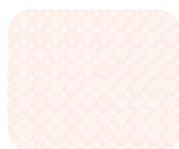
(M)



(N)



(O)



(P)



Backing  
44"

*If kitting, refer to the final pattern for yardage amounts, it is recommended that a sample is made to confirm accuracy.*