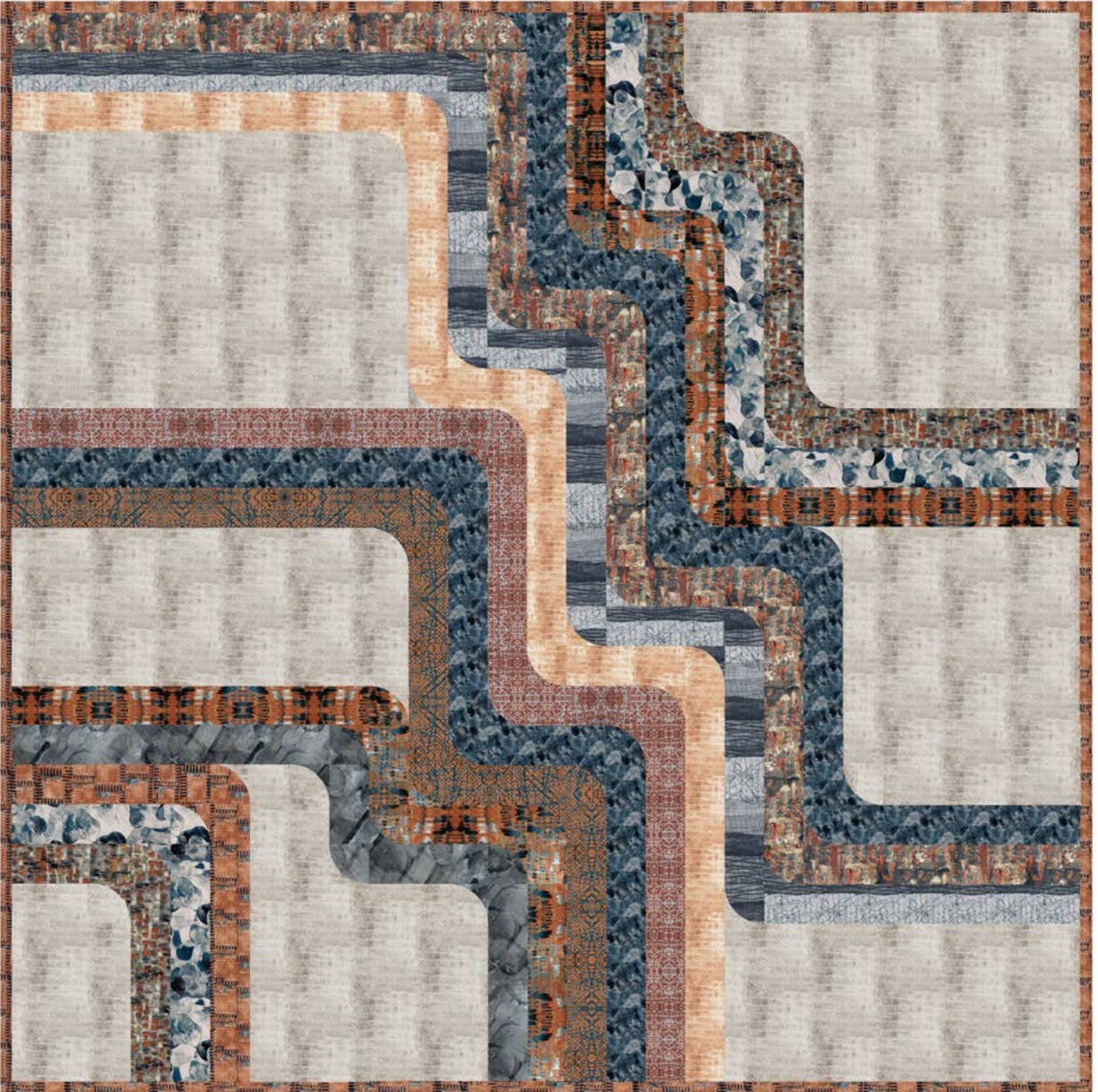


FreeSpirit



Featuring Rust & Bloom by Sarah Szczepanski/Artxtiles

Long Walk Quilt

Finished Size: 94" (2.39m) Square

Project designed by Sew Kind of Wonderful, Re-Colored by FreeSpirit Fabrics

Purchase pattern at sewkindofwonderful.com

Technique: Pieced, with Wonder Curve Ruler | Skill Level: Advanced Beginner

Fabric Requirements

| DESIGN | COLOR | ITEM ID | YARDAGE |
|-------------------------|-------------|--------------------|------------------|
| (A) Lupine | Amber | PWSS015.AMBER | ¾ yard (0.69m) |
| (B) Oxidize | Patina | PWSS016.PATINA | ½ yard (0.46m) |
| (C) Crystalize | Patina | PWSS017.PATINA | ¾ yard (0.69m) |
| (D) Rust | Rust | PWSS018.RUST* | 1 yard (0.91m) |
| (E) Budding | Royal Blue | PWSS019.ROYALBLUE | ⅝ yard (0.57m) |
| (F) Brunnera | Steel Blue | PWSS020.STEELBLUE | ⅞ yard (0.80m) |
| (G) Bloom | Navy | PWSS021.NAVY | ⅝ yard (0.57m) |
| (H) Larkspur | Stone | PWSS022.STONE | ¼ yard (0.23m) |
| (I) Trailing Vines | Orange Lily | PWSS023.ORANGELILY | ⅜ yard (0.34m) |
| (J) Climbing Amber | Amber | PWSS024.AMBER | ½ yard (0.46m) |
| (K) Ecru Rounds | Ecru | PWSS025.ECRU | 4¼ yards (3.89m) |
| (L) Ochre Little Rounds | Ochre | PWSS026.OCHRE | ⅝ yard (0.57m) |

* includes binding

Backing (Purchased Separately)

44" (1.12m) wide

Brunnera

Steel Blue

PWSS020.STEELBLUE

8 yards (7.32m)

OR

108" (2.74m) wide

2¾ yards (2.51m)



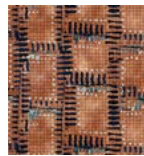
(A)



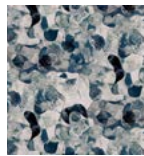
(B)



(C)



(D)



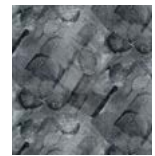
(E)



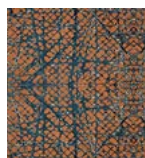
(F)



(G)



(H)



(I)



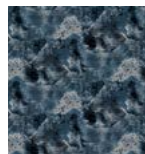
(J)



(K)



(L)



Backing
44"

If kitting, refer to the final pattern for yardage amounts, it is recommended that a sample is made to confirm accuracy.