

Featuring Root by e bond

# Love Triangle Quilt

Finished Size: 66 $\frac{1}{2}$ " (1.69m) Square

Project designed by Tied With A Ribbon-recolored by FreeSpirit Fabrics

Purchase pattern at [tiedwitharibbon.com](http://tiedwitharibbon.com)

Technique: Pieced | Skill Level: Advanced Beginner

[freespiritfabrics.com](http://freespiritfabrics.com)



# Love Triangle Quilt

## Fabric Requirements

DESIGN	COLOR	ITEM ID	YARDAGE
(A) Zerosum	Cosmos	PWEB018.COSMOS	2 $\frac{5}{8}$ yards (2.40m)
(B) Node	Froth	PWEB021.FROTH	$\frac{3}{8}$ yard (0.34m)
(C) Leaves	Particle	PWEB023.PARTICLE	$\frac{3}{8}$ yard (0.34m)
(D) Trees	Neonbright	PWEB024.NEONBRIGHT	$\frac{1}{2}$ yard (0.46m)
(E) Shoots	Verdant	PWEB025.VERDANT	$\frac{3}{8}$ yard (0.34m)
(F) Bits	Rainbow	PWEB027.RAINBOW*	$\frac{1}{2}$ yard (0.46m)
(G) Designer Essential Solids	Moonflower	CSFSESS.MOONFLOWER	$\frac{3}{8}$ yard (0.34m)
(H) Designer Essential Solids	Spruce	CSFSESS.SPRUC	$\frac{1}{2}$ yard (0.46m)
(I) Designer Essential Solids	Matcha	CSFSESS.MATCHA	$\frac{3}{8}$ yard (0.34m)
(J) Designer Essential Solids	Rouge	CSFSESS.ROUGE	$\frac{3}{8}$ yard (0.34m)

\* includes binding

## Backing (Purchased Separately)

**44" (1.12m) wide**

Leaves

Particle

PWEB023.PARTICLE

4 $\frac{1}{2}$  yards (4.11m)

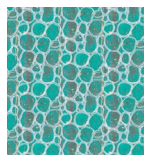
**OR**

**108" (2.74m) wide**

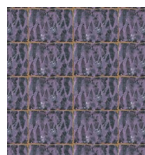
2 $\frac{1}{4}$  yards (2.06m)



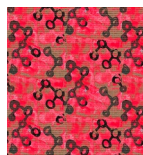
(A)



(B)



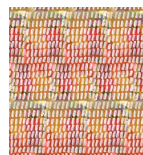
(C)



(D)



(E)



(F)



(G)



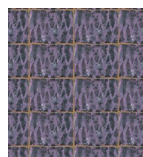
(H)



(I)



(J)



Backing  
44"

*If kitting, refer to the final pattern for yardage amounts, it is recommended that a sample is made to confirm accuracy.*