

Featuring Madagascar Adventure by Daughter Earth – Katy Tanis

# Madagascar Adventures Quilt

Finished Size: 72" x 90" (1.83m x 2.23m)

Project designed by Ruth Ann Berry - Quilter's Clinic

Purchase pattern at [quiltersclinic.com](http://quiltersclinic.com)

Technique: Pieced | Skill Level: Advanced Beginner



# Free Spirit Madagascar Adventures Quilt

## Fabric Requirements

DESIGN	COLOR	ITEM ID	YARDAGE
(A) Madagascar Wildlife Map	PANEL	PWKT001.XPANEL	1 Panel
(B) Spiny Forest	SAND	PWKT002.XSAND	½ yard (0.46m)
(C) Lemurs and Palms	JADE	PWKT003.XJADE	½ yard (0.46m)
(D) Painted Bamboo	MULTI	PWKT004.XMULTI	½ yard (0.46m)
(E) Jungle Vines	PURPLE	PWKT005.XPURPLE	¾ yard (0.69m)
(F) Traveler's Palm	PINK	PWKT006.XPINK	½ yard (0.46m)
(G) Rain Dots	WHITE	PWKT007.XWHITE*	1½ yards (1.37m)
(H) Field Notes	MULTI	PWKT008.XMULTI	1 yard (0.91m)
(I) Dwarf Lemurs	SPRUCE	PWKT009.XSPRUCE	½ yard (0.46m)
(J) Curled Up Lemurs	BLUE	PWKT010.XBLUE	¾ yard (0.69m)
(K) Silk Sifakas	GREEN	PWKT011.XGREEN	½ yard (0.46m)
(L) Ringtails	PEACH	PWKT012.XPEACH	½ yard (0.46m)
(M) Baobab Bloom	MULTI	PWKT013.XMULTI	½ yard (0.46m)
(N) Alluaudia	LAVENDER	PWKT014.XLAVENDER	1 yard (0.91m)

\* includes binding

## Backing (Purchased Separately)

**44" (1.12m) wide**

Jungle Vines

PURPLE

PWKT005.XPURPLE

5¼ yards (4.80m)

**OR**

**108" (2.74m) wide**

2½ yards (2.29m)



(A)



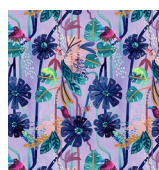
(B)



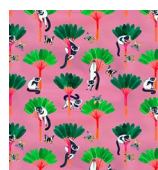
(C)



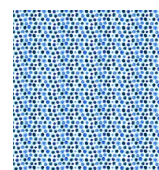
(D)



(E)



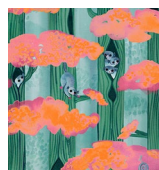
(F)



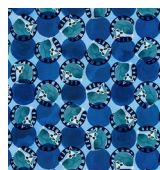
(G)



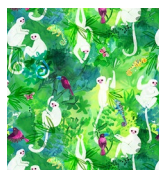
(H)



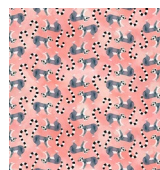
(I)



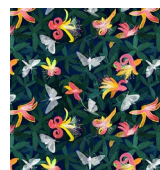
(J)



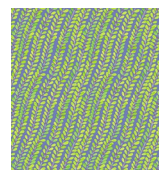
(K)



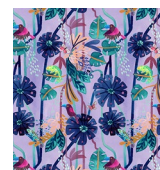
(L)



(M)



(N)



Backing  
44"

*If kitting, refer to the final pattern for yardage amounts,  
it is recommended that a sample is made to confirm accuracy.*